

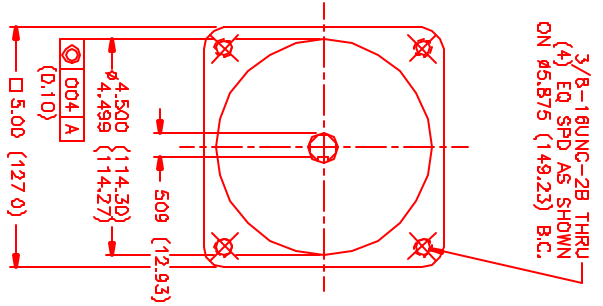
MOTOR DATA @ 230 VAC (TRAP)

MOTOR PARAMETERS	UNITS	VALUE
MOTOR HORSEPOWER	HP RATED	1.3
	KW RATED	1.0
MAX. OPERATING SPEED	N MAX	3600
SPEED @ RATED TORQUE	N RATED	3000
* CONTINUOUS RATED TORQUE	N-LEBS [Nm]	28.0 [3.2]
* CONTINUOUS STALL TORQUE	N-LEBS [Nm]	38.0 [4.3]
CONTINUOUS LINE CURRENT	AMPS	6.0
PEAK TORQUE	N-LEBS [Nm]	114.0 [12.9]
MAX. THEORETICAL ACCEL	RAO/SEC ²	80,000
TORQUE SENSITIVITY	Kt N-LEBS/AMP/Nm/AMP	6.21/.711
BACK EMF (LINE TO LINE)	Vrms/Krpm	55.0
D.C. RESISTANCE (P-P)	OHMS	3.2
INDUCTANCE (P-P)	MILLIHENRIES	15.3
ROTOR INERTIA	Jm [N-LEBS-SEC ²] Kg-M ²	.00191 [0.0021]
STATIC FRICTION	Tf [N-LEBS] Nm	.8 [0.9]

*25°C AMBIENT WITH A MAXIMUM CASE TEMPERATURE OF 100°C ON MOTOR, MOTOR MOUNTED ON A 12" X 12" X 1/2" ALUMINUM HEATSINK. THERMOSTAT IN STATOR WINDINGS WILL OPEN IF WINDING TEMPERATURE EXCEEDS 155°C. THIS ALLOWS FOR AN APPROXIMATE +10% HEADROOM IN THE CONTINUOUS TORQUE RATING BEFORE THERMOSTAT OPENS.

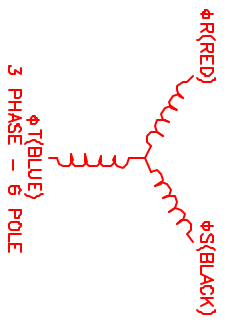
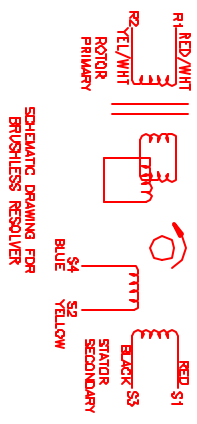
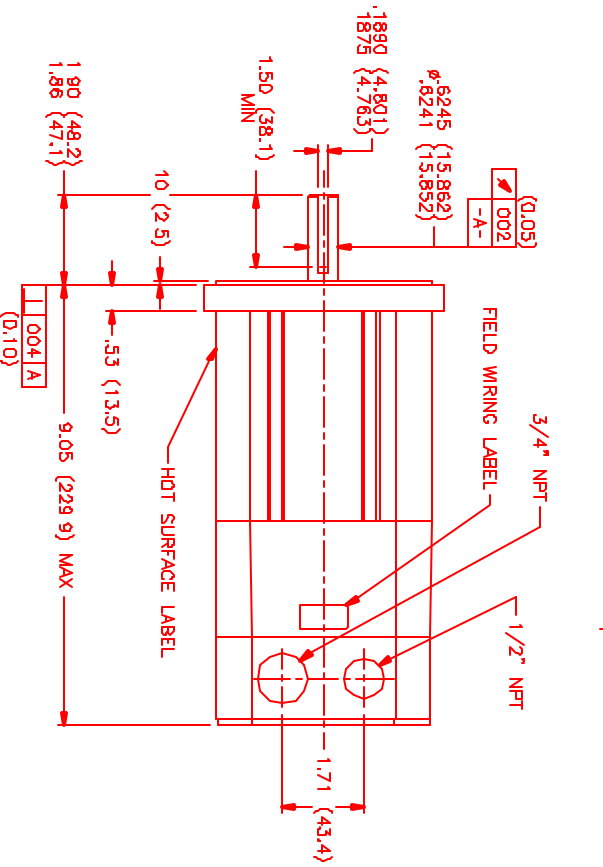
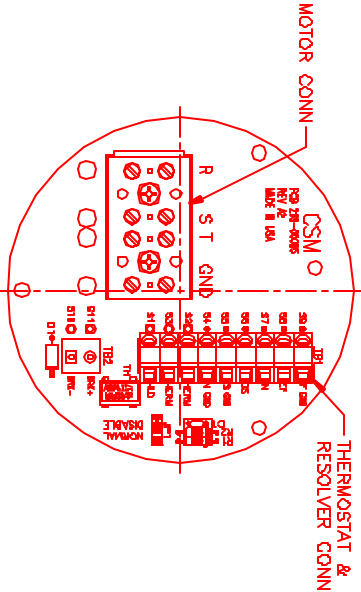
MECHANICAL NOTES:

1. AXIAL LEAD: 50 LBS MAX
2. RADIAL LOAD: 100 LBS MAX @ 1" FROM FACE
3. MOTOR SEALED TO IP65.
4. MOTOR WEIGHT: 14.8 LBS [6.7 Kg]
5. MOTOR FINISH: BLACK EPOXY
6. MOTOR OUTPUT SHAFT: STAINLESS STEEL
7. INCHES (MILLIMETERS)



CONNECTION CHART

MOTOR WIRE LEADS	WIRE COLOR	RES/THERM WIRE LEADS	WIRE COLOR
TERMINAL FUNCTION	WIRE COLOR	TERMINAL FUNCTION	WIRE COLOR
ΦR	RED	S9 REF GND	YEL/WHI
ΦS	BLACK	S8 REF	RED/WHI
ΦT	BLUE	S7 SIN	YELLOW
PE GND	GRN/YEL	S6 COS	RED
		S5 COS GND	BLACK
		S4 SIN GND	BLUE
		S3 THERM	BLACK
		S2 THERM	BLACK
		S1 RES SHLD	GRN/YEL



NO. PART NUMBER	DESCRIPTION	QTY.
1	MNS Systems Corporation Automation Division	
DATE	TITLE	REV
6/1/01	"A"/TRAP/230/ENP/RES/NPT	
DESIGNED	DRAWN	CHECKED
APPROVED		

TRAP 230/ENP/RES/NPT MPM1140ATG8G3N

REV.	REVISIONS	DATE	APP.
1	PRELIMINARY	6/1/01	ALS