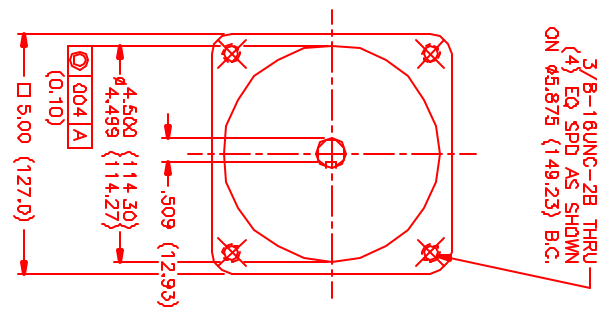


MOTOR DATA @ 230 VAC (TRAP)

MOTOR PARAMETERS	UNITS	VALUE
MOTOR HORSEPOWER	HP RATED	1.3
	KW RATED	1.0
MAX OPERATING SPEED	N MAX	3600
SPEED @ RATED TORQUE	N RATED	3000
* CONTINUOUS RATED TORQUE @ 3000 RPM	IN-LBS/Nm	28.0/3.2
* CONTINUOUS STALL TORQUE	IN-LBS/Nm	38.0/4.3
CONTINUOUS LINE CURRENT	AMPS	6.0
PEAK TORQUE	IN-LBS/Nm	114.0/12.9
MAX THEORETICAL ACCEL	AMPS	18.0
TORQUE SENSITIVITY	RA0/SEC ²	49.985
BACK EMF (LINE TO LINE)	Kt IN-LBS/AMP/Nm/AMP ²	6.21/7.1
D.C. RESISTANCE (P-P)	Ωms/Krpm	55.0
INDUCTANCE (P-P)	OHMS	3.2
ROTOR INERTIA W/BRAKE	μm(IN-LBS-SEC ² /KG-M ²)	15.3
STATIC FRICTION	μf (IN-LBS/Nm)	0.0023/0.000261
	μf (IN-LBS/Nm)	0.8/0.09

*25°C AMBIENT WITH A MAXIMUM CASE TEMPERATURE OF 100°C ON MOTOR. MOTOR MOUNTED ON A 12" X 12" X 1/2" ALUMINUM HEATSINK. THERMOSTAT IN STATOR WINDINGS WILL OPEN IF WINDING TEMPERATURE EXCEEDS 155°C. THIS ALLOWS FOR AN APPROXIMATE +10% HEADROOM IN THE CONTINUOUS TORQUE RATING BEFORE THERMOSTAT OPENS.

- MECHANICAL NOTES:**
- AXIAL LOAD: 50 LBS MAX
 - RADIAL LOAD: 100 LBS MAX @ 1" FROM FACE
 - MOTOR SEALED TO IP65.
 - MOTOR WEIGHT: 20 LBS. [9.1 Kg]
 - MOTOR FINISH: BLACK EPOXY
 - MOTOR OUTPUT SHAFT: STAINLESS STEEL
 - INCHES (MILLIMETERS)

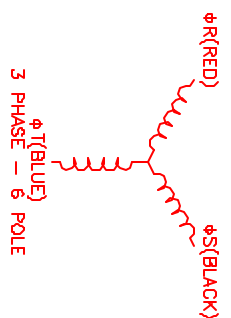
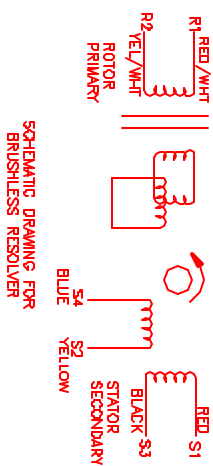
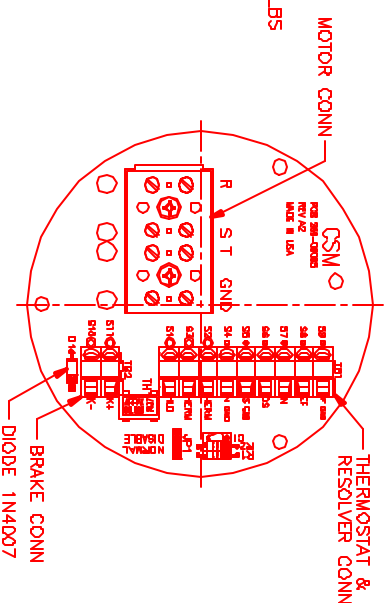
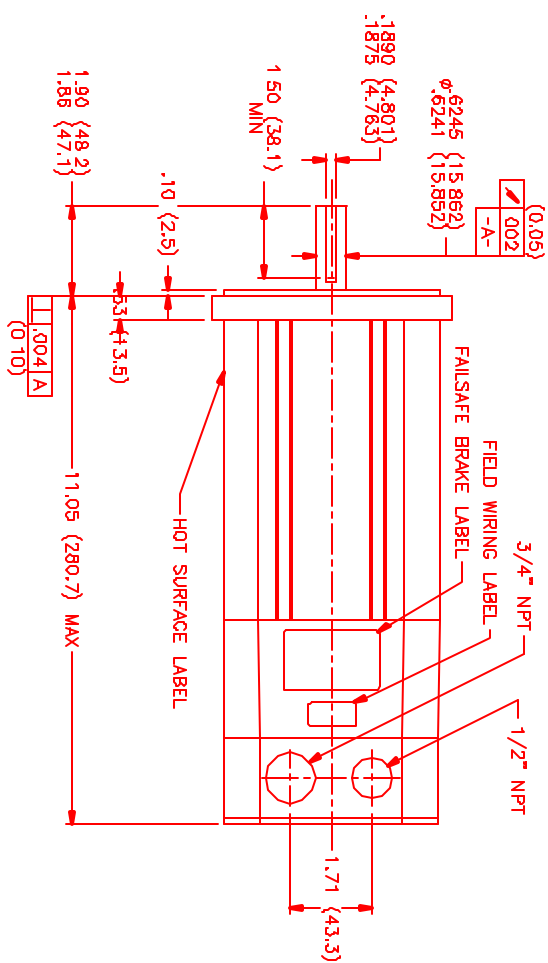


CONNECTION CHART

MOTOR WIRE LEADS	WIRE FUNCTION	WIRE COLOR
S11	BRK (+)	BLUE
S1D	BRK (-)	BLUE
S9	REF GND	YEL/WHIT
S8	REF	YEL/WHIT
S7	SIN	YELLOW
S6	COS	RED
S5	COS GND	BLACK
S4	SIN GND	BLUE
S3	THERM	BLACK
S2	THERM	BLACK
S1	RES SHLD	GRN/YEL

RES/BRAKE WIRE LEADS	WIRE FUNCTION	WIRE COLOR
S11	BRK (+)	BLUE
S1D	BRK (-)	BLUE
S9	REF GND	YEL/WHIT
S8	REF	YEL/WHIT
S7	SIN	YELLOW
S6	COS	RED
S5	COS GND	BLACK
S4	SIN GND	BLUE
S3	THERM	BLACK
S2	THERM	BLACK
S1	RES SHLD	GRN/YEL

FAILSAFE BRAKE: (290-00006)
MIN. HOLDING TORQUE: 240 IN-LBS
INPUT VOLTAGE: 24 VOLTS



NO.	PART NUMBER	DESCRIPTION	QTY.
1	MPM1140ATG8G3R	MPS Systems Corporation Automation Division	1

REV.	DESCRIPTION	DATE	APP.
1	PRELIMINARY	6/7/01	ALS