

⊙ MOTOR DATA @ 110 VAC (SINE)

MOTOR PARAMETERS	UNITS	VALUE
MOTOR HORSEPOWER	HP RATED	.94
	KW RATED	.70
MAX. OPERATING SPEED	N MAX	1900
SPEED @ RATED TORQUE	RPM	1200
* CONTINUOUS RATED TORQUE @ 1200 RPM	N-LBS [Nm]	49.0 [5.5]
* CONTINUOUS STALL TORQUE	N-LBS [Nm]	54.0 [6.1]
CONTINUOUS LINE CURRENT	AMPS (RMS/φ)	6.2
PEAK CURRENT	AMPS (RMS/φ)	189.0 [21.4]
MAX. THEORETICAL ACCEL	RAO/SEC ²	54,000
TORQUE SENSITIVITY	Kt N-LBS/AMP/0.04 [Nm/AMP/0.04]	8.81/.991
BACK EMF (LINE TO LINE)	Vrms/Krpm	55.0
D.C. RESISTANCE (P-P)	ΩHWS	.82
INDUCTANCE (P-P)	MILLIHENRIES	6.1
ROTOR INERTIA	Jm	.00351 [0.000391]
STATIC FRICTION	IN-LBS [Nm]	1.0 [11]

*25°C AMBIENT WITH A MAXIMUM CASE TEMPERATURE OF 100°C ON MOTOR. MOTOR MOUNTED ON A 1/2" X 1/2" X 1/2" ALUMINUM HEATSINK. THERMOSTAT IN STATOR WINDINGS WILL OPEN IF WINDING TEMPERATURE EXCEEDS 155°C. THIS ALLOWS FOR AN APPROXIMATE +10% HEADROOM IN THE CONTINUOUS TORQUE RATING BEFORE THERMOSTAT OPENS

MECHANICAL NOTES:

1. AXIAL LOAD: 50 LBS MAX
2. RADIAL LOAD: 100 LBS MAX @ 1" FROM FACE
3. MOTOR SEALED TO IP65.
4. MOTOR WEIGHT: 17.8 LBS. [8.1 Kg]
5. MOTOR FINISH: BLACK EPOXY
6. MOTOR OUTPUT SHAFT: STAINLESS STEEL
7. INCHES (MILLIMETERS)

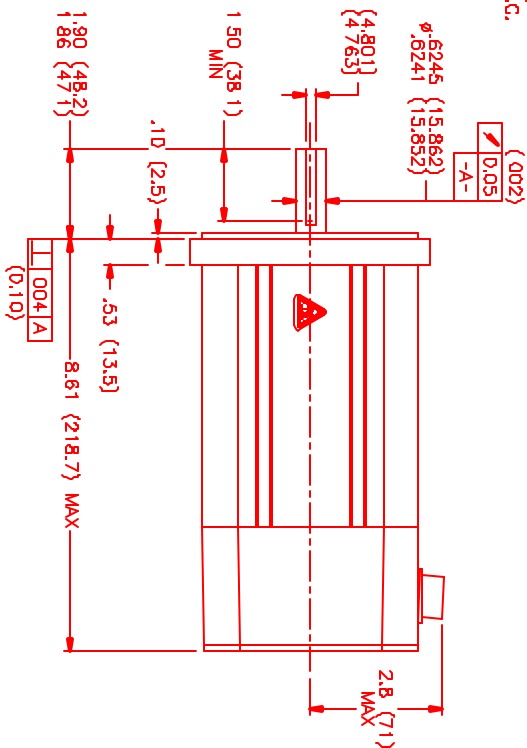
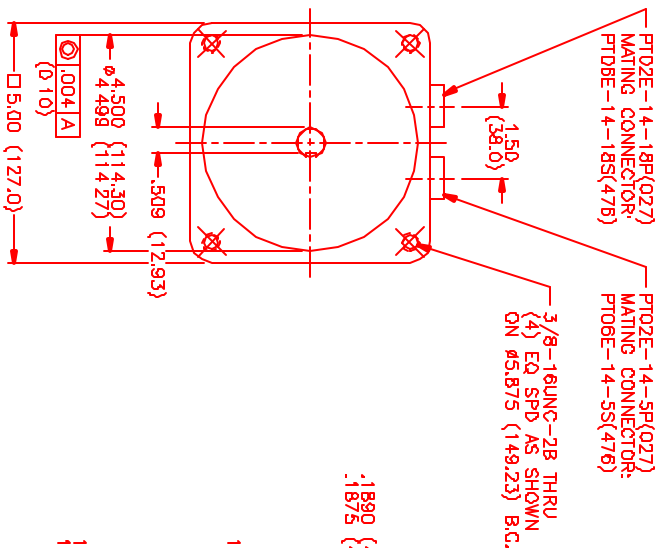
ENCODER: (290-00064)
DH48-100DP8-LB-5V

CONNECTION CHART
MOTOR CONNECTOR:
PT02E-14-5P(027)
(270-00025)

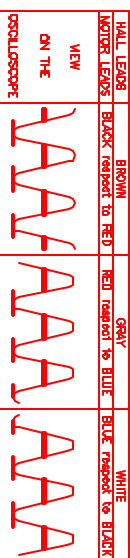
PIN	WIRE FUNCTION	WIRE COLOR
A	φR	RED
B	φS	BLACK
C	φT	BLUE
D	PE GND	GRN/YEL
E	-	-

ENCODER/THERM CONNECTOR:
PT02E-14-19P(027)
(270-00024)

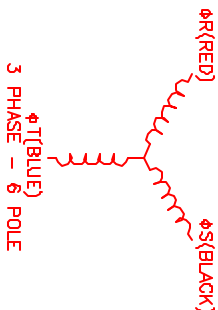
PIN	WIRE FUNCTION	WIRE COLOR
T	GROUND	BLACK
K	+5VDC	RED
B	CH A	BLUE
C	CH A'	BLUE/BLK
N	CH B	GREEN
P	CH B'	GRN/BLK
M	CH Z	YELLOW
U	CH Z'	YEL/BLK
E	CH U	BROWN
R	CH U'	BRN/BLK
F	CH V	GRAY
S	CH V'	GRAY/BLK
G	CH W	WHITE
H	CH W'	WHT/BLK
D	GND/CABLE	SHLD
A	THERM	BLACK
L	THERM	BLACK
J	GND	GRN/YEL



MOTOR ROTATION (CW [COUNTER CLOCKWISE]) (LOOKING AT THE FACE OF THE MOTOR)



MOTOR & HALL POSITION CHART



REV	DESCRIPTION	DATE	APP.
1	PRELIMINARY	4/19/00	LIN
A	E.C.O. - 594	10/24/00	AJS

NO.	PART NUMBER	DESCRIPTION	QTY.
1	290-00064	ENCODER	1
2	270-00025	MOTOR CONNECTOR	1
3	270-00024	ENCODER/THERM CONNECTOR	1
4	1141ASFG4M1N	MOTOR	1

NO. PART NUMBER DESCRIPTION QTY.
 1 290-00064 ENCODER
 2 270-00025 MOTOR CONNECTOR
 3 270-00024 ENCODER/THERM CONNECTOR
 4 1141ASFG4M1N MOTOR

DATE: 4/19/00
 DRAWN: MNS
 CHECKED: JLB/SB
 APPROVED: JLB/SB

TITLE: 1141ASFG4M1N
 PART: 1141ASFG4M1N
 REV: A

DATE: 4/19/00
 DRAWN: MNS
 CHECKED: JLB/SB
 APPROVED: JLB/SB

TITLE: 1141ASFG4M1N
 PART: 1141ASFG4M1N
 REV: A

DATE: 4/19/00
 DRAWN: MNS
 CHECKED: JLB/SB
 APPROVED: JLB/SB

TITLE: 1141ASFG4M1N
 PART: 1141ASFG4M1N
 REV: A

DATE: 4/19/00
 DRAWN: MNS
 CHECKED: JLB/SB
 APPROVED: JLB/SB

TITLE: 1141ASFG4M1N
 PART: 1141ASFG4M1N
 REV: A

DATE: 4/19/00
 DRAWN: MNS
 CHECKED: JLB/SB
 APPROVED: JLB/SB

TITLE: 1141ASFG4M1N
 PART: 1141ASFG4M1N
 REV: A

DATE: 4/19/00
 DRAWN: MNS
 CHECKED: JLB/SB
 APPROVED: JLB/SB

TITLE: 1141ASFG4M1N
 PART: 1141ASFG4M1N
 REV: A

DATE: 4/19/00
 DRAWN: MNS
 CHECKED: JLB/SB
 APPROVED: JLB/SB

TITLE: 1141ASFG4M1N
 PART: 1141ASFG4M1N
 REV: A

DATE: 4/19/00
 DRAWN: MNS
 CHECKED: JLB/SB
 APPROVED: JLB/SB

TITLE: 1141ASFG4M1N
 PART: 1141ASFG4M1N
 REV: A

DATE: 4/19/00
 DRAWN: MNS
 CHECKED: JLB/SB
 APPROVED: JLB/SB

TITLE: 1141ASFG4M1N
 PART: 1141ASFG4M1N
 REV: A

DATE: 4/19/00
 DRAWN: MNS
 CHECKED: JLB/SB
 APPROVED: JLB/SB

TITLE: 1141ASFG4M1N
 PART: 1141ASFG4M1N
 REV: A

DATE: 4/19/00
 DRAWN: MNS
 CHECKED: JLB/SB
 APPROVED: JLB/SB

TITLE: 1141ASFG4M1N
 PART: 1141ASFG4M1N
 REV: A

DATE: 4/19/00
 DRAWN: MNS
 CHECKED: JLB/SB
 APPROVED: JLB/SB

TITLE: 1141ASFG4M1N
 PART: 1141ASFG4M1N
 REV: A

DATE: 4/19/00
 DRAWN: MNS
 CHECKED: JLB/SB
 APPROVED: JLB/SB

TITLE: 1141ASFG4M1N
 PART: 1141ASFG4M1N
 REV: A

DATE: 4/19/00
 DRAWN: MNS
 CHECKED: JLB/SB
 APPROVED: JLB/SB

TITLE: 1141ASFG4M1N
 PART: 1141ASFG4M1N
 REV: A

DATE: 4/19/00
 DRAWN: MNS
 CHECKED: JLB/SB
 APPROVED: JLB/SB

TITLE: 1141ASFG4M1N
 PART: 1141ASFG4M1N
 REV: A

DATE: 4/19/00
 DRAWN: MNS
 CHECKED: JLB/SB
 APPROVED: JLB/SB

TITLE: 1141ASFG4M1N
 PART: 1141ASFG4M1N
 REV: A