

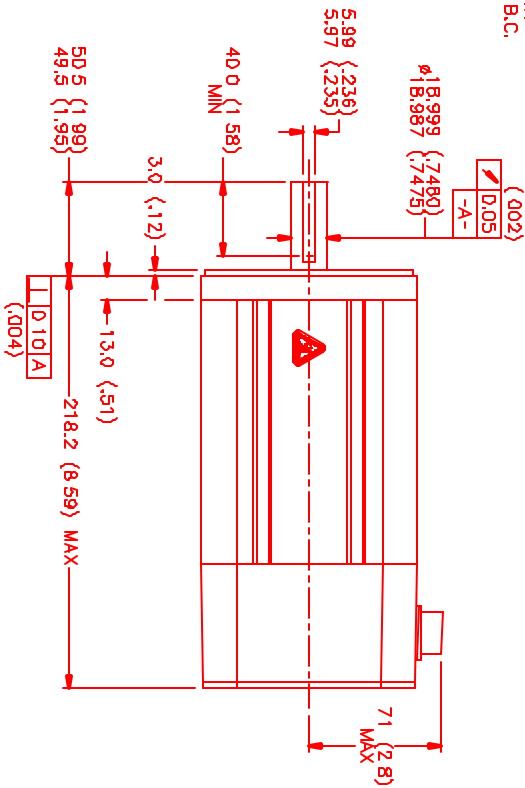
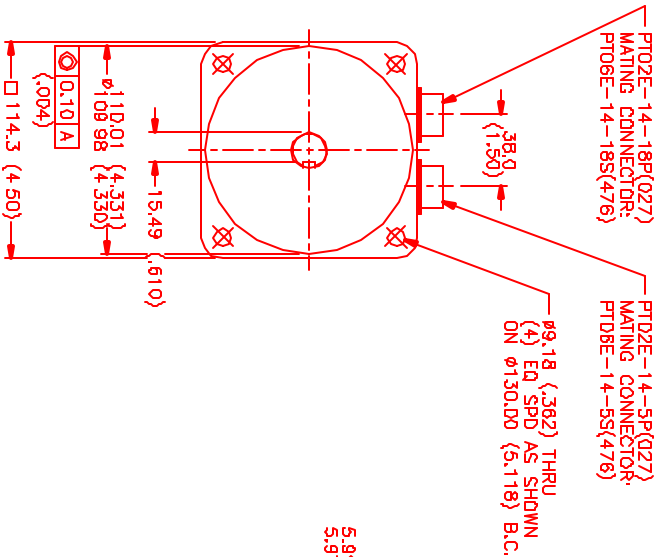
MOTOR DATA @ 230 VAC (SINE)

MOTOR PARAMETERS	UNITS	VALUE
HORSEPOWER	HP RATED	2.1
KILOWATTS	KW RATED	1.6
MAX. OPERATING SPEED	N MAX RPM	4200
SPEED @ RATED TORQUE	N RATED RPM	3000
* CONTINUOUS RATED TORQUE	N-LEBS [Nm]	45.0 [5.1]
* CONTINUOUS STALL TORQUE	N-LEBS [Nm]	54.0 [6.1]
CONTINUOUS LINE CURRENT	AMPS (RMS/Φ)	6.2
PEAK CURRENT	N-LEBS [Nm]	189.1 [21.3]
PEAK TORQUE	AMPS (RMS/Φ)	21.6
MAX. THEORETICAL ACCEL.	RAD/SEC ²	54,029
TORQUE SENSITIVITY	Kt N-LEBS/MIN/Φ / (IN/AMP/IN/Φ)	8.77 [0.99]
BACK EMF (LINE TO LINE)	Vrms/Krpm	55.0
D.C. RESISTANCE (P-P)	Ω RMS	.82
INDUCTANCE (P-P)	MILLIHENRIES	8.1
ROTOR INERTIA	Jm [IN-LBS-SEC ²] Kg-M ²	0.00335 [0.000339]
STATIC FRICTION	Tf [IN-LBS] [Nm]	1.0 [.11]

*25°C AMBIENT WITH A MAXIMUM CASE TEMPERATURE OF 100°C ON MOTOR. MOTOR MOUNTED ON A 12" X 12" X 1/2" ALUMINUM HEATSINK THERMOSTAT IN STATOR WINDINGS WILL OPEN IF WINDING TEMPERATURE EXCEEDS 155°C. THIS ALLOWS FOR AN APPROXIMATE +10% HEADROOM IN THE CONTINUOUS TORQUE RATING BEFORE THERMOSTAT OPENS

MECHANICAL NOTES:

1. AXIAL LOAD: 50 LBS MAX
2. RADIAL LOAD: 100 LBS MAX @ 1" FROM FACE
3. MOTOR SEALED TO IP65.
4. MOTOR WEIGHT: 18 LBS. [B.2 Kg]
5. MOTOR FINISH: BLACK EPOXY
6. MOTOR OUTPUT SHAFT: STAINLESS STEEL
7. MILLIMETERS (INCHES)



CONNECTION CHART

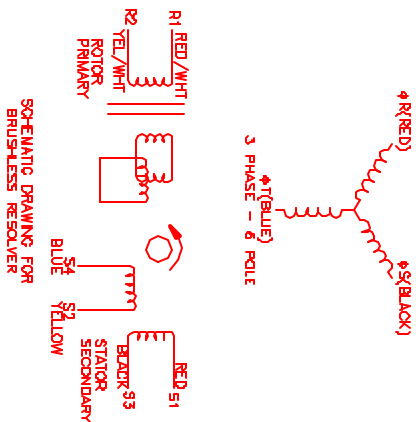
MOTOR CONNECTOR:
PTDZE-14-5P(Q27)
(270-00026)

MOTOR WIRE LEADS	WIRE FUNCTION	WIRE COLOR
A	4R	RED
B	4S	BLACK
C	4T	BLUE
D	PE GND	GRN/YEL
E	-	-

RESOLVER/THERM CONNECTOR:

PTDZE-14-1BP(Q27)
(270-00024)

RES/THERM WIRE LEADS	WIRE FUNCTION	WIRE COLOR
U	THERM	BLACK
N	THERM	BLACK
H	SIN	YELLOW
Q	COS GND	BLACK
S	COS	RED
F	SIN GND	BLUE
R	REF GND	YEL/WHIT
E	REF	RED/WHIT
D	RES SHLD	GRN/YEL
P	GND	GRN/YEL
A	-	-
B	-	-
C	-	-
J	-	-
K	-	-
L	-	-
M	-	-
T	-	-



REV. 1 REVISIONS DATE APR. 2/10/00 LIN

REV.	DESCRIPTION	DATE	APP.
1	PRELIMINARY	2/10/00	LIN

NO.	PART NUMBER	DESCRIPTION	QTY.
1	MPS Systems Corporation Automation Division		
2	MPS Systems Corporation Automation Division		
3	MPS Systems Corporation Automation Division		
4	MPS Systems Corporation Automation Division		
5	MPS Systems Corporation Automation Division		
6	MPS Systems Corporation Automation Division		
7	MPS Systems Corporation Automation Division		
8	MPS Systems Corporation Automation Division		
9	MPS Systems Corporation Automation Division		
10	MPS Systems Corporation Automation Division		
11	MPS Systems Corporation Automation Division		
12	MPS Systems Corporation Automation Division		
13	MPS Systems Corporation Automation Division		
14	MPS Systems Corporation Automation Division		
15	MPS Systems Corporation Automation Division		
16	MPS Systems Corporation Automation Division		
17	MPS Systems Corporation Automation Division		
18	MPS Systems Corporation Automation Division		
19	MPS Systems Corporation Automation Division		
20	MPS Systems Corporation Automation Division		
21	MPS Systems Corporation Automation Division		
22	MPS Systems Corporation Automation Division		
23	MPS Systems Corporation Automation Division		
24	MPS Systems Corporation Automation Division		
25	MPS Systems Corporation Automation Division		
26	MPS Systems Corporation Automation Division		
27	MPS Systems Corporation Automation Division		
28	MPS Systems Corporation Automation Division		
29	MPS Systems Corporation Automation Division		
30	MPS Systems Corporation Automation Division		
31	MPS Systems Corporation Automation Division		
32	MPS Systems Corporation Automation Division		
33	MPS Systems Corporation Automation Division		
34	MPS Systems Corporation Automation Division		
35	MPS Systems Corporation Automation Division		
36	MPS Systems Corporation Automation Division		
37	MPS Systems Corporation Automation Division		
38	MPS Systems Corporation Automation Division		
39	MPS Systems Corporation Automation Division		
40	MPS Systems Corporation Automation Division		
41	MPS Systems Corporation Automation Division		
42	MPS Systems Corporation Automation Division		
43	MPS Systems Corporation Automation Division		
44	MPS Systems Corporation Automation Division		
45	MPS Systems Corporation Automation Division		
46	MPS Systems Corporation Automation Division		
47	MPS Systems Corporation Automation Division		
48	MPS Systems Corporation Automation Division		
49	MPS Systems Corporation Automation Division		
50	MPS Systems Corporation Automation Division		
51	MPS Systems Corporation Automation Division		
52	MPS Systems Corporation Automation Division		
53	MPS Systems Corporation Automation Division		
54	MPS Systems Corporation Automation Division		
55	MPS Systems Corporation Automation Division		
56	MPS Systems Corporation Automation Division		
57	MPS Systems Corporation Automation Division		
58	MPS Systems Corporation Automation Division		
59	MPS Systems Corporation Automation Division		
60	MPS Systems Corporation Automation Division		
61	MPS Systems Corporation Automation Division		
62	MPS Systems Corporation Automation Division		
63	MPS Systems Corporation Automation Division		
64	MPS Systems Corporation Automation Division		
65	MPS Systems Corporation Automation Division		
66	MPS Systems Corporation Automation Division		
67	MPS Systems Corporation Automation Division		
68	MPS Systems Corporation Automation Division		
69	MPS Systems Corporation Automation Division		
70	MPS Systems Corporation Automation Division		
71	MPS Systems Corporation Automation Division		
72	MPS Systems Corporation Automation Division		
73	MPS Systems Corporation Automation Division		
74	MPS Systems Corporation Automation Division		
75	MPS Systems Corporation Automation Division		
76	MPS Systems Corporation Automation Division		
77	MPS Systems Corporation Automation Division		
78	MPS Systems Corporation Automation Division		
79	MPS Systems Corporation Automation Division		
80	MPS Systems Corporation Automation Division		
81	MPS Systems Corporation Automation Division		
82	MPS Systems Corporation Automation Division		
83	MPS Systems Corporation Automation Division		
84	MPS Systems Corporation Automation Division		
85	MPS Systems Corporation Automation Division		
86	MPS Systems Corporation Automation Division		
87	MPS Systems Corporation Automation Division		
88	MPS Systems Corporation Automation Division		
89	MPS Systems Corporation Automation Division		
90	MPS Systems Corporation Automation Division		
91	MPS Systems Corporation Automation Division		
92	MPS Systems Corporation Automation Division		
93	MPS Systems Corporation Automation Division		
94	MPS Systems Corporation Automation Division		
95	MPS Systems Corporation Automation Division		
96	MPS Systems Corporation Automation Division		
97	MPS Systems Corporation Automation Division		
98	MPS Systems Corporation Automation Division		
99	MPS Systems Corporation Automation Division		
100	MPS Systems Corporation Automation Division		