

MOTOR DATA @ 230 VAC (SINE)

MOTOR PARAMETERS	UNITS	VALUE
MOTOR HORSEPOWER	HP RATED	2.1
	KW RATED	1.6
MAX. OPERATING SPEED	N MAX	4200
SPEED @ RATED TORQUE	N RATED	3000
* CONTINUOUS RATED TORQUE @ 3000 RPM	IN-LBS [Nm]	45.0 [5.1]
* CONTINUOUS STALL TORQUE	IN-LBS [Nm]	54.0 [6.1]
CONTINUOUS LINE CURRENT	AMPS [RMS/Φ]	6.2
PEAK CURRENT	1pk	189.0 [21.3]
MAX. THEORETICAL ACCEL	AMPS [RMS/Φ]	21.6
TORQUE SENSITIVITY	RD/SEC*	48.487
BACK EMF (LINE TO LINE)	Kt IN-LBS/AMPERE/49 [Nm/AMPERE/49]	8.810.991
D.C. RESISTANCE (P-P)	±10% OHMS	55.0
INDUCTANCE (P-P)	±10% MILLIHENRIES	0.82
ROTOR INERTIA W/ BRAKE	Jm IN-LBS-SEC ² [Kg-M ²]	6.1
STATIC FRICTION	Tf IN-LBS [Nm]	.00391 [0.0044]

*25°C AMBIENT WITH A MAXIMUM CASE TEMPERATURE OF 100°C ON MOTOR. MOTOR MOUNTED ON A 12" X 12" X 1/2" ALUMINUM HEATSINK. THERMOSTAT IN STATOR WINDINGS WILL OPEN IF WINDING TEMPERATURE EXCEEDS 155°C. THIS ALLOWS FOR AN APPROXIMATE +10% HEADROOM IN THE CONTINUOUS TORQUE RATING BEFORE THERMOSTAT OPENS.

- MECHANICAL NOTES:**
- AXIAL LOAD: 50 LBS MAX
 - RADIAL LOAD: 100 LBS MAX @ 1" FROM FACE
 - MOTOR SEALED TO IP65.
 - MOTOR WEIGHT: 26.4 LBS. [12.0 Kg]
 - MOTOR FINISH: BLACK EPOXY
 - MOTOR OUTPUT SHAFT: STAINLESS STEEL
 - MILLIMETERS (INCHES)

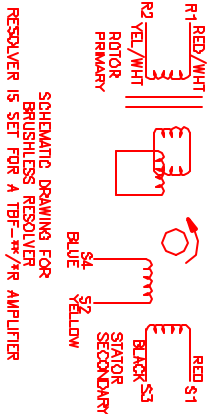
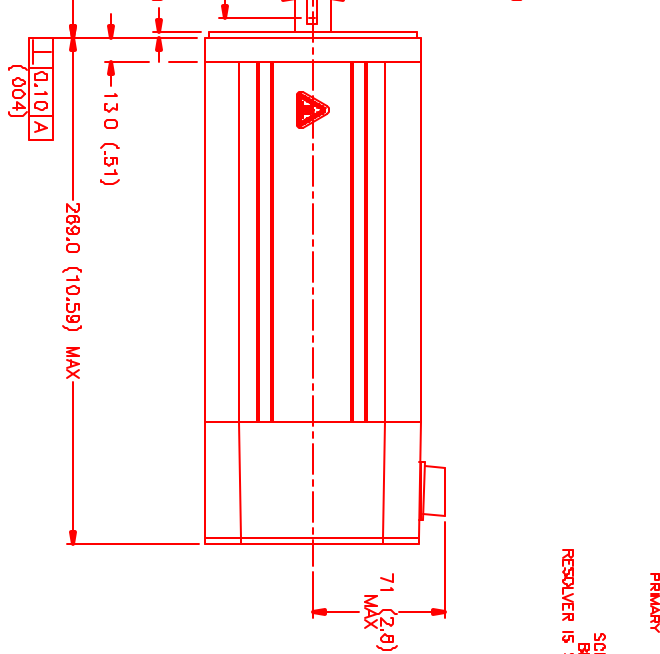
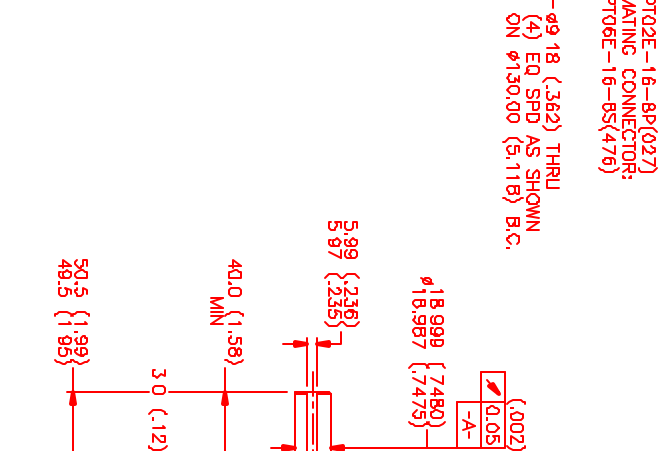
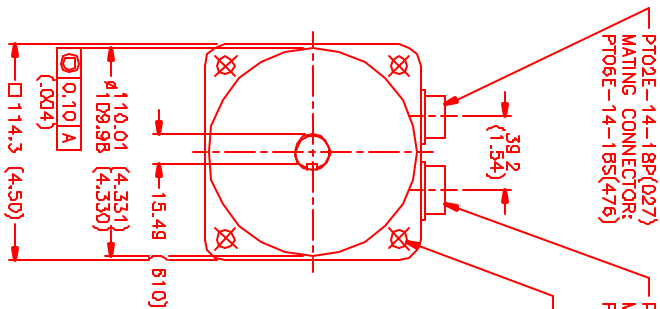
CONNECTION CHART

MOTOR/BRAKE CONNECTOR:
PT02E-18-8P(027)
(270-00032)

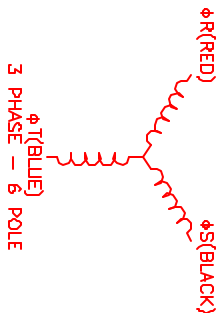
RESOLVER/THERM CONNECTOR:
PT02E-14-18P(027)
(270-00024)

MOTOR/BRAKE WIRE LEADS	WIRE FUNCTION	WIRE COLOR
A	ΦR	RED
B	ΦS	BLACK
C	ΦT	BLUE
D	PE GND	GRN/YEL
E	BRK SHLD	-
F	BRK (+)	DIODE
G	BRK (-)	IN4007
H	-	-

RES/THERM WIRE LEADS	WIRE FUNCTION	WIRE COLOR
A	-	-
B	-	-
C	-	-
J	-	-
K	-	-
L	-	-
M	-	-
T	-	-



SCHEMATIC DRAWING FOR BRUSHLESS RESOLVER. RESOLVER IS SET FOR A TRF-***/R AMPLIFIER



REV	DESCRIPTION	DATE	APP'D.
1	PRELIMINARY	1/29/02	MS

NO.	PART NUMBER	DESCRIPTION	QTY.
1	MNS Systems Corporation Automation Division		
TITLE: MNS/ SINE/230 /NET/TBFR/CONN/BRK DATE: 1/28/02 DRAWN: MNS CHECKED: MNS APPROVED: MNS PART NUMBER: MPM1141ASG7H1R QUANTITY: 1/2h1			