

Ⓜ MOTOR DATA @ 110 VAC (TRAP)

MOTOR PARAMETERS	UNITS	VALUE
HORSEPOWER	HP RATED	.94
KILOWATTS	KW	.70
MAX. OPERATING SPEED	N MAX	1900
SPEED @ RATED TORQUE	N RATED	1200
* CONTINUOUS RATED TORQUE @ 1200 RPM	IN-LBS [Nm]	49.0 [5.5]
* CONTINUOUS STALL TORQUE	IN-LBS [Nm]	54.0 [6.1]
CONTINUOUS LINE CURRENT	AMPS	8.7
PEAK TORQUE	IN-LBS [Nm]	189.0 [21.4]
PEAK CURRENT	AMPS	30.6
MAX. THEORETICAL ACCEL.	RAD/SEC <sup>2</sup>	54,000
TORQUE SENSITIVITY	Kt [IN-LBS/AMP] [Nm/AMP]	6.2 [0.70]
BACK EMF (LINE TO LINE)	Vrms/Krpm	55.0
D.C. RESISTANCE (P-P)	OHMS	.82
INDUCTANCE (P-P)	MILLIHENRIES	6.1
ROTOR INERTIA	Jm [IN-LBS-SEC <sup>2</sup> ] [Kg-M <sup>2</sup> ]	.0035 [0.00039]
STATIC FRICTION	Tf [IN-LBS] [Nm]	1.0 [0.11]

\*25°C AMBIENT WITH A MAXIMUM CASE TEMPERATURE OF 100°C ON MOTOR. MOTOR MOUNTED ON A 12" X 12" X 1/2" ALUMINUM HEATSINK. THERMOSTAT IN STATOR WINDINGS WILL OPEN IF WINDING TEMPERATURE EXCEEDS 155°C. THIS ALLOWS FOR AN APPROXIMATE +10% HEADROOM IN THE CONTINUOUS TORQUE RATING BEFORE THERMOSTAT OPENS.

MECHANICAL NOTES:

1. AXIAL LOAD: 50 LBS MAX
2. RADIAL LOAD: 100 LBS MAX @ 1" FROM FACE
3. MOTOR SEALED TO IP65.
4. MOTOR WEIGHT: 18.4 LBS. [ 8.3 kg]
5. MOTOR FINISH: BLACK EPOXY
6. MOTOR OUTPUT SHAFT: STAINLESS STEEL
7. INCHES (MILLIMETERS)

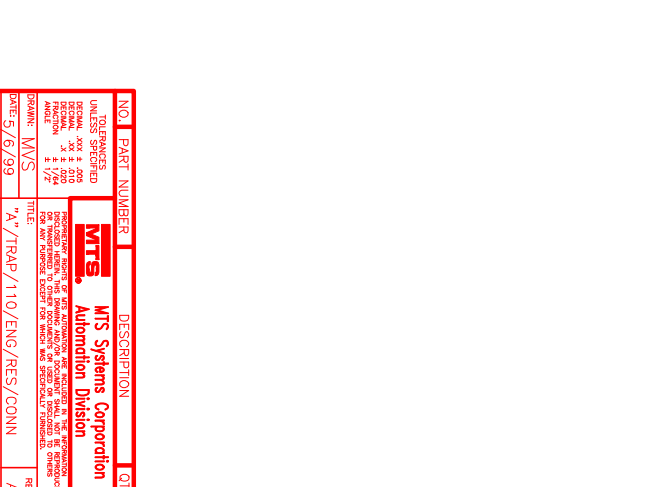
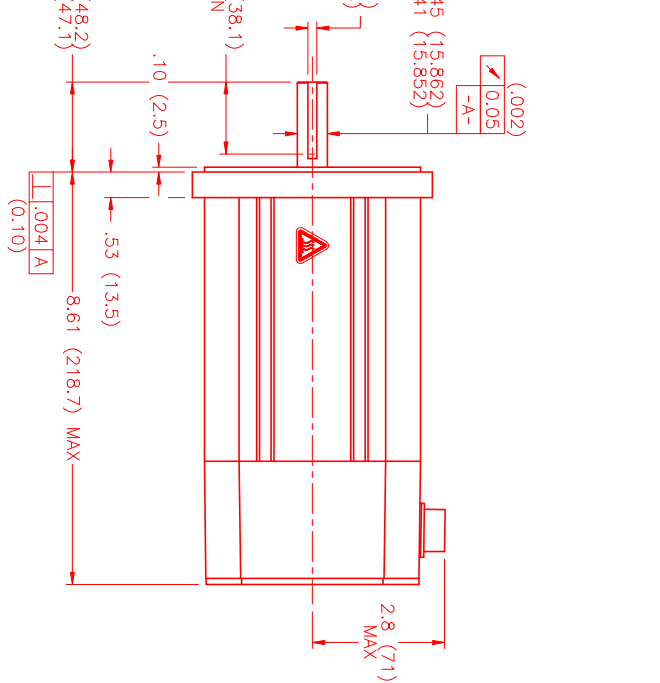
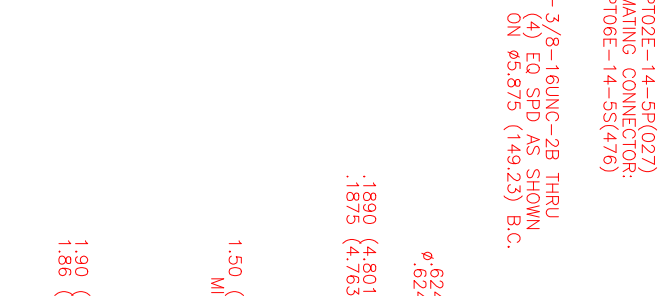
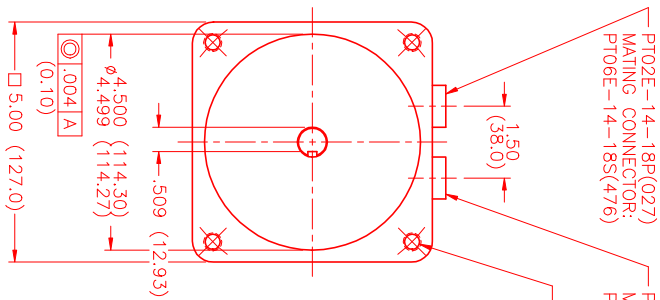
CONNECTION CHART

MOTOR CONNECTOR:  
PT02E-14-5P(027)  
(270-00026)

PIN	WIRE FUNCTION	WIRE COLOR
A	ΦR	RED
B	ΦS	BLACK
C	ΦT	BLUE
D	PE GND	GRN/YEL
E	-	-

RESOLVER/THERM CONNECTOR:  
PT02E-14-18P(027)  
(270-00024)

PIN	WIRE FUNCTION	WIRE COLOR
A	RES	RED
B	THERM	BLACK
C	THERM	BLACK
D	SIN	YELLOW
E	COS GND	BLACK
F	COS	RED
G	SIN GND	BLUE
H	REF GND	YEL/WHI
I	REF	RED/WHI
J	RES SHLD	GRN/YEL
K	GND	GRN/YEL
L	-	-
M	-	-
N	-	-
O	-	-
P	-	-



NO. PART NUMBER		DESCRIPTION		QTY.
<p>UNLESS SPECIFIED OTHERWISE, ALL DIMENSIONS ARE IN INCHES. DIMENSIONS IN PARENTHESES ARE IN MILLIMETERS. DIMENSIONS IN PARENTHESES ARE NOT TO BE USED TO DIMENSION. DIMENSIONS IN PARENTHESES ARE NOT TO BE USED TO DIMENSION. DIMENSIONS IN PARENTHESES ARE NOT TO BE USED TO DIMENSION.</p>				
REV.	DESCRIPTION	DATE	APPD.	
A	PRELIMINARY	5/7/99	MVS	
A	E.C.O. - 594	10/4/00	AJS	

DATE: 5/6/99  
DRAWN: MPM1141ATF6G1N  
SCALE: 1/2:1

MTS  
Automation Division

RESOLVER/THERM CONNECTOR: PT02E-14-18P(027) (270-00024)

MOTOR CONNECTOR: PT02E-14-5P(027) (270-00026)

MTS-110/ENG/RES/CONN NUMBER: MPM1141ATF6G1N