

MOTOR DATA @ 230 VAC (TRAP)

MOTOR PARAMETERS	UNITS	VALUE
HORSEPOWER	HP RATED	2.1
KILOWATTS	KW RATED	1.6
MAX. OPERATING SPEED	N MAX	4200
SPEED @ RATED TORQUE	N RATED	3000
* CONTINUOUS RATED TORQUE @ 3000 RPM	IN-LBS [Nm]	45.0 [5.1]
* CONTINUOUS STALL TORQUE	IN-LBS [Nm]	54.0 [6.1]
CONTINUOUS LINE CURRENT	AMPS	8.7
PEAK TORQUE	IN-LBS [Nm]	189.1 [21.3]
PEAK CURRENT	AMPS	30.5
MAX. THEORETICAL ACCEL.	RAD/SEC ²	48,487
TORQUE SENSITIVITY	Kt [IN-LBS/AMP] [Nm/AMP]	6.2 [.71]
BACK EMF (LINE TO LINE)	Vrms/krpm	55.0
D.C. RESISTANCE (P-P)	OHMS	.82
INDUCTANCE (P-P)	MILLIHENRIES	6.1
ROTOR INERTIA W/BRAKE	Jm [IN-LBS-SEC ²] [Kg-M ²]	.00391 [0.0044]
STATIC FRICTION	Tf [IN-LBS] [Nm]	1.0 [.11]

*25°C AMBIENT WITH A MAXIMUM CASE TEMPERATURE OF 100°C ON MOTOR. MOTOR MOUNTED ON A 12" X 12" X 1/2" ALUMINUM HEATSINK. THERMOSTAT IN STATOR WINDINGS WILL OPEN IF WINDING TEMPERATURE EXCEEDS 155°C. THIS ALLOWS FOR AN APPROXIMATE +10% HEADROOM IN THE CONTINUOUS TORQUE RATING BEFORE THERMOSTAT OPENS.

MECHANICAL NOTES:

- AXIAL LOAD: 50 LBS MAX
- RADIAL LOAD: 100 LBS MAX @ 1" FROM FACE
- MOTOR SEALED TO IP65.
- MOTOR WEIGHT: 23.5 LBS. [10.7 kg]
- MOTOR FINISH: BLACK EPOXY
- MOTOR OUTPUT SHAFT: STAINLESS STEEL
- MILLIMETERS (INCHES)

FAILSAFE BRAKE:

MIN HOLDING TORQUE: 240 IN-LBS
INPUT VOLTAGE: 24 VOLTS

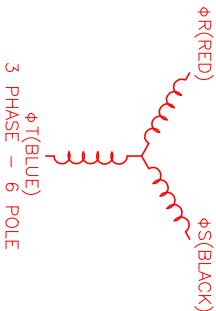
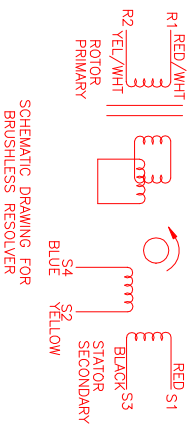
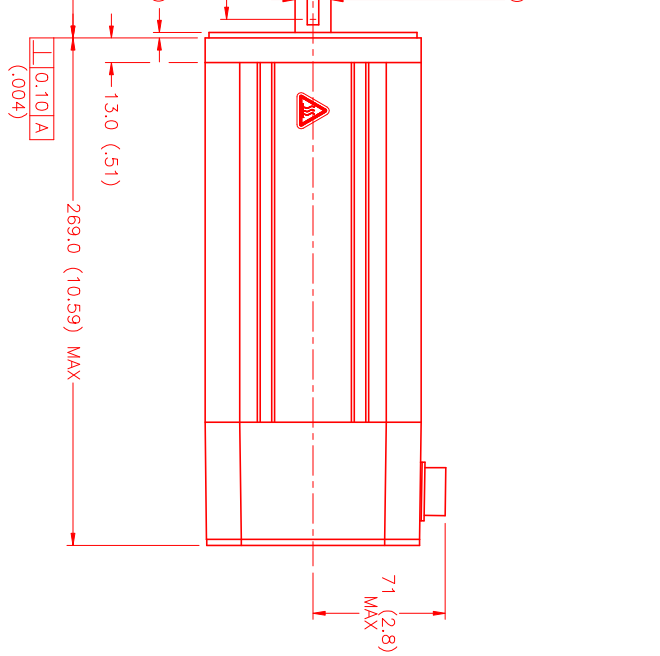
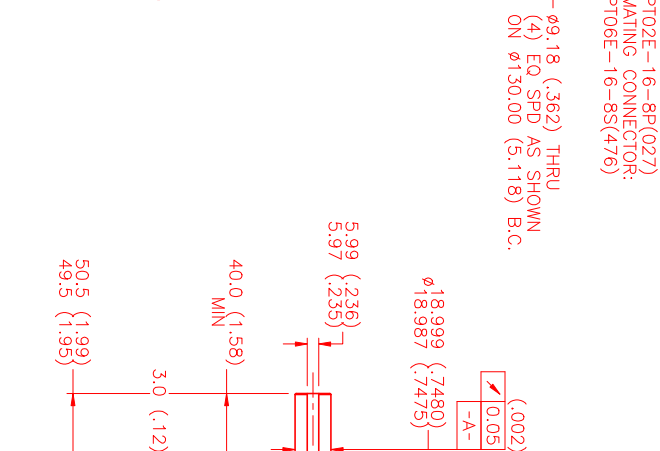
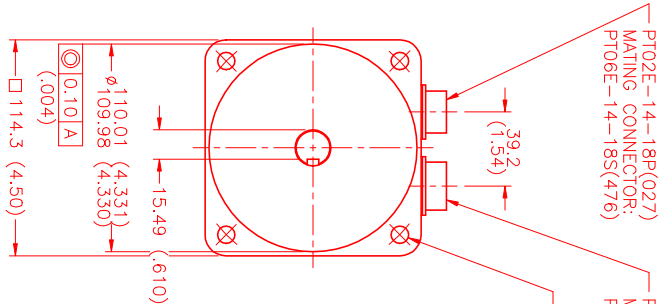
CONNECTION CHART

MOTOR/BRAKE CONNECTOR:
PT02E-16-8P(027)

RESOLVER/THERM CONNECTOR:
PT02E-14-18P(027)

MOTOR/BRAKE	WIRE FUNCTION	WIRE COLOR	WIRE LEADS
A	ΦR	RED	RED
B	ΦS	BLACK	BLACK
C	ΦT	BLUE	YELLOW
D	PE SHLD	GRN/YEL	BLACK
E	BRK SHLD	-	RED
F	BRK (+)	DIODE	BLUE
G	BRK (-)	DIODE	YEL/WHI
H	-	-	RED/YEL

RES/THERM	WIRE FUNCTION	WIRE COLOR	WIRE LEADS
A	RES	RED	RED
B	THERM	BLACK	BLACK
C	THERM	BLACK	BLACK
D	THERM	BLACK	BLACK
E	THERM	BLACK	BLACK
F	THERM	BLACK	BLACK
G	THERM	BLACK	BLACK
H	THERM	BLACK	BLACK
I	THERM	BLACK	BLACK
J	THERM	BLACK	BLACK
K	THERM	BLACK	BLACK
L	THERM	BLACK	BLACK
M	THERM	BLACK	BLACK
T	THERM	BLACK	BLACK



REV.	DESCRIPTION	DATE	APPD.
1	PRELIMINARY	1/11/99	MVS

NO.	PART NUMBER	DESCRIPTION	QTY.
1	MPM1141ATG7G1R	MPS Systems Corporation Automation Division	1

DATE	BY	REV.
1/11/99	MVS	1

TITLE	SCALE
"A" / 230 / MET / RES / CONN / BRK	1/2:1

APPROVED	DRAWN	CHECKED
MVS	MVS	MVS