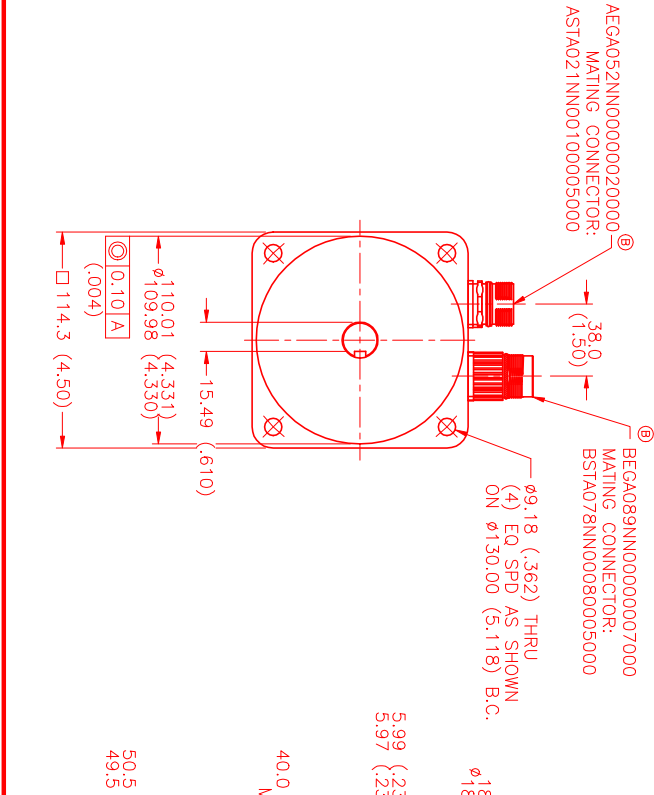


MOTOR DATA @ 230 VAC (TRAP)

MOTOR PARAMETERS	UNITS	VALUE
HORSEPOWER	HP RATED	2.1
	KW	1.6
MAX. OPERATING SPEED	N MAX	4200
SPEED @ RATED TORQUE	RPM	3000
* CONTINUOUS RATED TORQUE @ 3000 RPM	N RATED	45.0 [5.1]
CONTINUOUS STALL TORQUE	IN-LBS [Nm]	54.0 [6.1]
CONTINUOUS LINE CURRENT	AMPS	8.7
PEAK CURRENT	TPk	189.0 [21.3]
	AMPS	30.5
MAX. THEORETICAL ACCEL.	RAD/SEC ²	48,487
TORQUE SENSITIVITY	Kt IN-LBS/AMPI Nm/AMP	6.2 [0.71]
BACK EMF (LINE TO LINE)	Vrms/Krpm	55.0
D.C. RESISTANCE (P-P)	OHMS	.82
INDUCTANCE (P-P)	OHMS	6.1
ROTOR INERTIA W/BRAKE	Jm [IN-LBS-SEC ²] Kg-M ²	.00391 [0.0044]
STATIC FRICTION	Tf	1.0 [0.11]

*25°C AMBIENT WITH A MAXIMUM CASE TEMPERATURE OF 100°C ON MOTOR. MOTOR MOUNTED ON A 12" X 12" X 1/2" ALUMINUM HEATSINK. THERMOSTAT IN STATOR WINDINGS WILL OPEN IF WINDING TEMPERATURE EXCEEDS 155°C. THIS ALLOWS FOR AN APPROXIMATE +10% HEADROOM IN THE CONTINUOUS TORQUE RATING BEFORE THERMOSTAT OPENS.

- MECHANICAL NOTES:**
- AXIAL LOAD: 50 LBS MAX
 - RADIAL LOAD: 100 LBS MAX @ 1" FROM FACE
 - MOTOR SEALED TO IP65.
 - MOTOR WEIGHT: 23.1 LBS. [10.5 Kg]
 - MOTOR FINISH: BLACK EPOXY
 - MOTOR OUTPUT SHAFT: STAINLESS STEEL
 - MILLIMETERS (INCHES)



CONNECTION CHART

ENCODER CONNECTOR:
@ AEGAO52NN000000200000
(270-00257)

PIN	WIRE FUNCTION	WIRE COLOR
1	GN D(OV)	BLACK
2	CH A(A)	BLUE/BLK
3	CH A(A)	BLUE
4	CH B(B)	GREEN
5	CH B(B)	GRN/BLK
6	CH Z(Z)	YELLOW
7	CH Z(Z)	YEL/BLK
8	+5V(+5V)	RED
9	-	-
10	CH U(RG U)	BROWN
11	CH V(RLG V)	GRAY
12	CH W(RLG W)	WHITE

MOTOR/BRK/THERM CONNECTOR:

@ BEGA089NN00000007000
(270-00256)

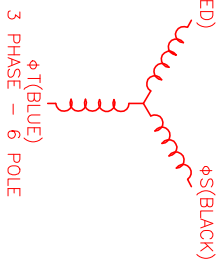
PIN	WIRE FUNCTION	WIRE COLOR
1	ØR(U1)	RED
2	PE GND	GRN/YEL
3	ØS(W1)	BLACK
4	ØT(V1)	BLUE
A	BRK (+)	DIODE
B	BRK (-)	1N4007
C	THERM	BLACK
D	THERM	BLACK

MOTOR & HALL POSITION CHART (GERMAN - TBF-V)

HALL LEADS	WHITE	BROWN	GRAY
MOTOR LEADS	BLACK respect to RED	RED respect to BLUE	BLUE respect to BLACK

VIEW ON THE OSCILLOSCOPE

*MOTOR ROTATION COW (COUNTER CLOCKWISE) (LOOKING AT THE FACE OF THE MOTOR)



REVISIONS

REV.	DESCRIPTION	DATE	APPD.
A	PRELIMINARY	6/9/00	MVS
B	E.C.O. - 591	9/13/00	MVS
B	E.C.O. - 620	4/10/01	AJS

NO.	PART NUMBER	DESCRIPTION	QTY.
UNLSE	UNLSE	UNLSE	UNLSE
DATE:	6/9/00		
BY:	MVS		
TITLE:	"A" 230 /MET/TBF/INTER/BRK		
APPROVED:			
DATE:	6/9/00		
BY:	MVS		
TITLE:	"A" 230 /MET/TBF/INTER/BRK		
APPROVED:			
DATE:	6/9/00		
BY:	MVS		
TITLE:	"A" 230 /MET/TBF/INTER/BRK		
APPROVED:			
DATE:	6/9/00		
BY:	MVS		
TITLE:	"A" 230 /MET/TBF/INTER/BRK		
APPROVED:			
DATE:	6/9/00		
BY:	MVS		
TITLE:	"A" 230 /MET/TBF/INTER/BRK		
APPROVED:			
DATE:	6/9/00		
BY:	MVS		
TITLE:	"A" 230 /MET/TBF/INTER/BRK		
APPROVED:			
DATE:	6/9/00		
BY:	MVS		
TITLE:	"A" 230 /MET/TBF/INTER/BRK		
APPROVED:			
DATE:	6/9/00		
BY:	MVS		
TITLE:	"A" 230 /MET/TBF/INTER/BRK		
APPROVED:			
DATE:	6/9/00		
BY:	MVS		
TITLE:	"A" 230 /MET/TBF/INTER/BRK		
APPROVED:			
DATE:	6/9/00		
BY:	MVS		
TITLE:	"A" 230 /MET/TBF/INTER/BRK		
APPROVED:			
DATE:	6/9/00		
BY:	MVS		
TITLE:	"A" 230 /MET/TBF/INTER/BRK		
APPROVED:			
DATE:	6/9/00		
BY:	MVS		
TITLE:	"A" 230 /MET/TBF/INTER/BRK		
APPROVED:			
DATE:	6/9/00		
BY:	MVS		
TITLE:	"A" 230 /MET/TBF/INTER/BRK		
APPROVED:			
DATE:	6/9/00		
BY:	MVS		
TITLE:	"A" 230 /MET/TBF/INTER/BRK		
APPROVED:			
DATE:	6/9/00		
BY:	MVS		
TITLE:	"A" 230 /MET/TBF/INTER/BRK		
APPROVED:			
DATE:	6/9/00		
BY:	MVS		
TITLE:	"A" 230 /MET/TBF/INTER/BRK		
APPROVED:			
DATE:	6/9/00		
BY:	MVS		
TITLE:	"A" 230 /MET/TBF/INTER/BRK		
APPROVED:			
DATE:	6/9/00		
BY:	MVS		
TITLE:	"A" 230 /MET/TBF/INTER/BRK		
APPROVED:			
DATE:	6/9/00		
BY:	MVS		
TITLE:	"A" 230 /MET/TBF/INTER/BRK		
APPROVED:			
DATE:	6/9/00		
BY:	MVS		
TITLE:	"A" 230 /MET/TBF/INTER/BRK		
APPROVED:			
DATE:	6/9/00		
BY:	MVS		
TITLE:	"A" 230 /MET/TBF/INTER/BRK		
APPROVED:			
DATE:	6/9/00		
BY:	MVS		
TITLE:	"A" 230 /MET/TBF/INTER/BRK		
APPROVED:			
DATE:	6/9/00		
BY:	MVS		
TITLE:	"A" 230 /MET/TBF/INTER/BRK		
APPROVED:			
DATE:	6/9/00		
BY:	MVS		
TITLE:	"A" 230 /MET/TBF/INTER/BRK		
APPROVED:			
DATE:	6/9/00		
BY:	MVS		
TITLE:	"A" 230 /MET/TBF/INTER/BRK		
APPROVED:			
DATE:	6/9/00		
BY:	MVS		
TITLE:	"A" 230 /MET/TBF/INTER/BRK		
APPROVED:			
DATE:	6/9/00		
BY:	MVS		
TITLE:	"A" 230 /MET/TBF/INTER/BRK		
APPROVED:			
DATE:	6/9/00		
BY:	MVS		
TITLE:	"A" 230 /MET/TBF/INTER/BRK		
APPROVED:			
DATE:	6/9/00		
BY:	MVS		
TITLE:	"A" 230 /MET/TBF/INTER/BRK		
APPROVED:			
DATE:	6/9/00		
BY:	MVS		
TITLE:	"A" 230 /MET/TBF/INTER/BRK		
APPROVED:			
DATE:	6/9/00		
BY:	MVS		
TITLE:	"A" 230 /MET/TBF/INTER/BRK		
APPROVED:			
DATE:	6/9/00		
BY:	MVS		
TITLE:	"A" 230 /MET/TBF/INTER/BRK		
APPROVED:			
DATE:	6/9/00		
BY:	MVS		
TITLE:	"A" 230 /MET/TBF/INTER/BRK		
APPROVED:			
DATE:	6/9/00		
BY:	MVS		
TITLE:	"A" 230 /MET/TBF/INTER/BRK		
APPROVED:			
DATE:	6/9/00		
BY:	MVS		
TITLE:	"A" 230 /MET/TBF/INTER/BRK		
APPROVED:			
DATE:	6/9/00		
BY:	MVS		
TITLE:	"A" 230 /MET/TBF/INTER/BRK		
APPROVED:			
DATE:	6/9/00		
BY:	MVS		
TITLE:	"A" 230 /MET/TBF/INTER/BRK		
APPROVED:			
DATE:	6/9/00		
BY:	MVS		
TITLE:	"A" 230 /MET/TBF/INTER/BRK		
APPROVED:			
DATE:	6/9/00		
BY:	MVS		
TITLE:	"A" 230 /MET/TBF/INTER/BRK		
APPROVED:			
DATE:	6/9/00		
BY:	MVS		
TITLE:	"A" 230 /MET/TBF/INTER/BRK		
APPROVED:			
DATE:	6/9/00		
BY:	MVS		
TITLE:	"A" 230 /MET/TBF/INTER/BRK		
APPROVED:			
DATE:	6/9/00		
BY:	MVS		
TITLE:	"A" 230 /MET/TBF/INTER/BRK		
APPROVED:			
DATE:	6/9/00		
BY:	MVS		
TITLE:	"A" 230 /MET/TBF/INTER/BRK		
APPROVED:			
DATE:	6/9/00		
BY:	MVS		
TITLE:	"A" 230 /MET/TBF/INTER/BRK		
APPROVED:			
DATE:	6/9/00		
BY:	MVS		
TITLE:	"A" 230 /MET/TBF/INTER/BRK		
APPROVED:			
DATE:	6/9/00		
BY:	MVS		
TITLE:	"A" 230 /MET/TBF/INTER/BRK		
APPROVED:			
DATE:	6/9/00		
BY:	MVS		
TITLE:	"A" 230 /MET/TBF/INTER/BRK		
APPROVED:			
DATE:	6/9/00		
BY:	MVS		
TITLE:	"A" 230 /MET/TBF/INTER/BRK		
APPROVED:			
DATE:	6/9/00		
BY:	MVS		
TITLE:	"A" 230 /MET/TBF/INTER/BRK		
APPROVED:			
DATE:	6/9/00		
BY:	MVS		
TITLE:	"A" 230 /MET/TBF/INTER/BRK		
APPROVED:			
DATE:	6/9/00		
BY:	MVS		
TITLE:	"A" 230 /MET/TBF/INTER/BRK		
APPROVED:			
DATE:	6/9/00		
BY:	MVS		
TITLE:	"A" 230 /MET/TBF/INTER/BRK		
APPROVED:			
DATE:	6/9/00		
BY:	MVS		
TITLE:	"A" 230 /MET/TBF/INTER/BRK		
APPROVED:			
DATE:	6/9/00		
BY:	MVS		
TITLE:	"A" 230 /MET/TBF/INTER/BRK		
APPROVED:			
DATE:	6/9/00		
BY:	MVS		
TITLE:	"A" 230 /MET/TBF/INTER/BRK		
APPROVED:			
DATE:	6/9/00		
BY:	MVS		
TITLE:	"A" 230 /MET/TBF/INTER/BRK		
APPROVED:			
DATE:	6/9/00		
BY:	MVS		
TITLE:	"A" 230 /MET/TBF/INTER/BRK		
APPROVED:			
DATE:	6/9/00		
BY:	MVS		
TITLE:	"A" 230 /MET/TBF/INTER/BRK		
APPROVED:			
DATE:	6/9/00		
BY:	MVS		
TITLE:	"A" 230 /MET/TBF/INTER/BRK		
APPROVED:			
DATE:	6/9/00		
BY:	MVS		
TITLE:	"A" 230 /MET/TBF/INTER/BRK		
APPROVED:			
DATE:	6/9/00		
BY:	MVS		
TITLE:	"A" 230 /MET/TBF/INTER/BRK		
APPROVED:			
DATE:	6/9/00		
BY:	MVS		
TITLE:	"A" 230 /MET/TBF/INTER/BRK		
APPROVED:			
DATE:	6/9/00		
BY:	MVS		
TITLE:	"A" 230 /MET/TBF/INTER/BRK		
APPROVED:			
DATE:	6/9/00		
BY:	MVS		
TITLE:	"A" 230 /MET/TBF/INTER/BRK		
APPROVED:			
DATE:	6/9/00		