

MOTOR DATA @ 230 VAC (SINE)

MOTOR PARAMETERS	UNITS	VALUE
HORSEPOWER	HP RATED	1.2
KILOWATTS	KW RATED	.88
MAX. OPERATING SPEED	N MAX	2100
SPEED @ RATED TORQUE	N RATED	1500
* CONTINUOUS RATED TORQUE	N-LBS[Nm]	50.0[5.6]
* CONTINUOUS STALL TORQUE	N-LBS[Nm]	54.0[6.1]
CONTINUOUS LINE CURRENT	AMPS(RMS/Φ)	3.1
PEAK CURRENT	AMPS(RMS/Φ)	189.0[21.3]
MAX. THEORETICAL ACCEL.	RAD/SEC ²	54,000
TORQUE SENSITIVITY	Kt [N-LBS/AMP/RMS/Φ][Nm/AMP/RMS/Φ]	17.5[1.98]
BACK EMF (LINE TO LINE)	Vrms/Krpm	110.0
D.C. RESISTANCE (P-P)	OHMS	3.3
INDUCTANCE (P-P)	MILLIHENRIES	24.4
ROTOR INERTIA	Jm [N-LBS-SEC ²][Kg-M ²]	.0035[.00039]
STATIC FRICTION	Tf [N-LBS][Nm]	1.0[0.11]

CONNECTION CHART
MOTOR CONNECTOR:
PT02E-14-5P(027)
(270-00026)

MOTOR WIRE LEADS	WIRE COLOR	WIRE FUNCTION
A	RED	ΦR
B	BLACK	ΦS
C	BLUE	ΦT
D	GRN/YEL	PE GND
E	-	-

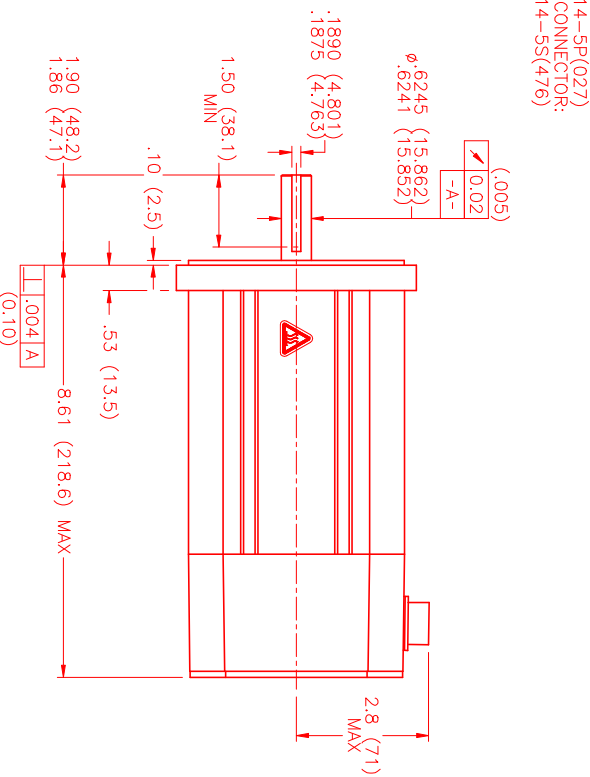
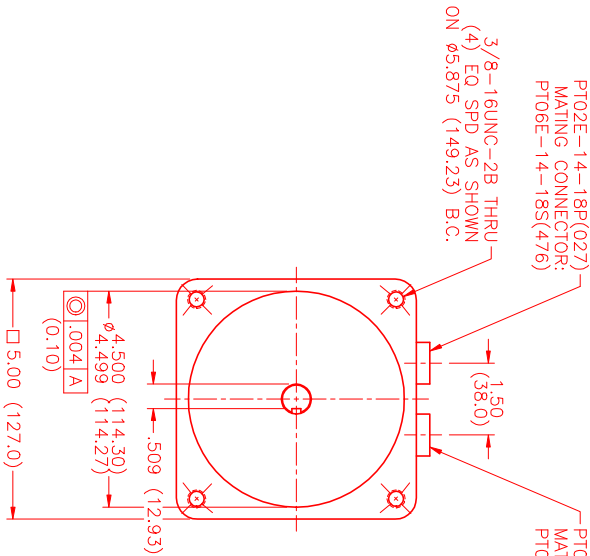
RESOLVER/THERM CONNECTOR:
PT02E-14-18P(027)
(270-00024)

MOTOR WIRE LEADS	RES/THERM WIRE LEADS
A	RES/THERM
B	THERM
C	RES/THERM
D	RES/THERM
E	RES/THERM
F	RES/THERM
G	RES/THERM
H	RES/THERM
I	RES/THERM
J	RES/THERM
K	RES/THERM
L	RES/THERM
M	RES/THERM
N	RES/THERM
O	RES/THERM
P	RES/THERM
Q	RES/THERM
R	RES/THERM
S	RES/THERM
T	RES/THERM

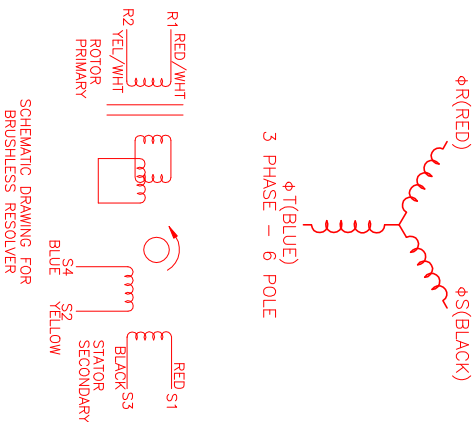
*25°C AMBIENT WITH A MAXIMUM CASE TEMPERATURE OF 100°C ON MOTOR. MOTOR MOUNTED ON A 12" X 12" X 1/2" ALUMINUM HEATSINK. THERMOSTAT IN STATOR WINDINGS WILL OPEN IF WINDING TEMPERATURE EXCEEDS 155°C. THIS ALLOWS FOR AN APPROXIMATE +10% HEADROOM IN THE CONTINUOUS TORQUE RATING BEFORE THERMOSTAT OPENS.

MECHANICAL NOTES:

1. AXIAL LOAD: 50 LBS MAX
2. RADIAL LOAD: 100 LBS MAX @ 1" FROM FACE
3. MOTOR SEALED TO IP65.
4. MOTOR WEIGHT: 18.4 LBS. [8.3 kg]
5. MOTOR FINISH: BLACK EPOXY
6. MOTOR OUTPUT SHAFT: STAINLESS STEEL
7. INCHES (MILLIMETERS)



REV.	DESCRIPTION	DATE	APPD.
1	PRELIMINARY	9/11/00	AJS



SCHEMATIC DRAWING FOR BRUSHLESS RESOLVER

NO.	PART NUMBER	DESCRIPTION	QTY.
1	PT02E-14-18P(027)	RESOLVER/THERM CONNECTOR	1
2	PT02E-14-5P(027)	MOTOR CONNECTOR	1

NO.	PART NUMBER	DESCRIPTION	QTY.
1	PT02E-14-18P(027)	RESOLVER/THERM CONNECTOR	1
2	PT02E-14-5P(027)	MOTOR CONNECTOR	1

NO.	PART NUMBER	DESCRIPTION	QTY.
1	PT02E-14-18P(027)	RESOLVER/THERM CONNECTOR	1
2	PT02E-14-5P(027)	MOTOR CONNECTOR	1

NO.	PART NUMBER	DESCRIPTION	QTY.
1	PT02E-14-18P(027)	RESOLVER/THERM CONNECTOR	1
2	PT02E-14-5P(027)	MOTOR CONNECTOR	1

NO.	PART NUMBER	DESCRIPTION	QTY.
1	PT02E-14-18P(027)	RESOLVER/THERM CONNECTOR	1
2	PT02E-14-5P(027)	MOTOR CONNECTOR	1

NO.	PART NUMBER	DESCRIPTION	QTY.
1	PT02E-14-18P(027)	RESOLVER/THERM CONNECTOR	1
2	PT02E-14-5P(027)	MOTOR CONNECTOR	1

NO.	PART NUMBER	DESCRIPTION	QTY.
1	PT02E-14-18P(027)	RESOLVER/THERM CONNECTOR	1
2	PT02E-14-5P(027)	MOTOR CONNECTOR	1

NO.	PART NUMBER	DESCRIPTION	QTY.
1	PT02E-14-18P(027)	RESOLVER/THERM CONNECTOR	1
2	PT02E-14-5P(027)	MOTOR CONNECTOR	1

NO.	PART NUMBER	DESCRIPTION	QTY.
1	PT02E-14-18P(027)	RESOLVER/THERM CONNECTOR	1
2	PT02E-14-5P(027)	MOTOR CONNECTOR	1

NO.	PART NUMBER	DESCRIPTION	QTY.
1	PT02E-14-18P(027)	RESOLVER/THERM CONNECTOR	1
2	PT02E-14-5P(027)	MOTOR CONNECTOR	1

NO.	PART NUMBER	DESCRIPTION	QTY.
1	PT02E-14-18P(027)	RESOLVER/THERM CONNECTOR	1
2	PT02E-14-5P(027)	MOTOR CONNECTOR	1

NO.	PART NUMBER	DESCRIPTION	QTY.
1	PT02E-14-18P(027)	RESOLVER/THERM CONNECTOR	1
2	PT02E-14-5P(027)	MOTOR CONNECTOR	1

NO.	PART NUMBER	DESCRIPTION	QTY.
1	PT02E-14-18P(027)	RESOLVER/THERM CONNECTOR	1
2	PT02E-14-5P(027)	MOTOR CONNECTOR	1

NO.	PART NUMBER	DESCRIPTION	QTY.
1	PT02E-14-18P(027)	RESOLVER/THERM CONNECTOR	1
2	PT02E-14-5P(027)	MOTOR CONNECTOR	1

NO.	PART NUMBER	DESCRIPTION	QTY.
1	PT02E-14-18P(027)	RESOLVER/THERM CONNECTOR	1
2	PT02E-14-5P(027)	MOTOR CONNECTOR	1

NO.	PART NUMBER	DESCRIPTION	QTY.
1	PT02E-14-18P(027)	RESOLVER/THERM CONNECTOR	1
2	PT02E-14-5P(027)	MOTOR CONNECTOR	1

NO.	PART NUMBER	DESCRIPTION	QTY.
1	PT02E-14-18P(027)	RESOLVER/THERM CONNECTOR	1
2	PT02E-14-5P(027)	MOTOR CONNECTOR	1

NO.	PART NUMBER	DESCRIPTION	QTY.
1	PT02E-14-18P(027)	RESOLVER/THERM CONNECTOR	1
2	PT02E-14-5P(027)	MOTOR CONNECTOR	1

NO.	PART NUMBER	DESCRIPTION	QTY.
1	PT02E-14-18P(027)	RESOLVER/THERM CONNECTOR	1
2	PT02E-14-5P(027)	MOTOR CONNECTOR	1

NO.	PART NUMBER	DESCRIPTION	QTY.
1	PT02E-14-18P(027)	RESOLVER/THERM CONNECTOR	1
2	PT02E-14-5P(027)	MOTOR CONNECTOR	1

NO.	PART NUMBER	DESCRIPTION	QTY.
1	PT02E-14-18P(027)	RESOLVER/THERM CONNECTOR	1
2	PT02E-14-5P(027)	MOTOR CONNECTOR	1

NO.	PART NUMBER	DESCRIPTION	QTY.
1	PT02E-14-18P(027)	RESOLVER/THERM CONNECTOR	1
2	PT02E-14-5P(027)	MOTOR CONNECTOR	1

NO.	PART NUMBER	DESCRIPTION	QTY.
1	PT02E-14-18P(027)	RESOLVER/THERM CONNECTOR	1
2	PT02E-14-5P(027)	MOTOR CONNECTOR	1

NO.	PART NUMBER	DESCRIPTION	QTY.
1	PT02E-14-18P(027)	RESOLVER/THERM CONNECTOR	1
2	PT02E-14-5P(027)	MOTOR CONNECTOR	1

NO.	PART NUMBER	DESCRIPTION	QTY.
1	PT02E-14-18P(027)	RESOLVER/THERM CONNECTOR	1
2	PT02E-14-5P(027)	MOTOR CONNECTOR	1

NO.	PART NUMBER	DESCRIPTION	QTY.
1	PT02E-14-18P(027)	RESOLVER/THERM CONNECTOR	1
2	PT02E-14-5P(027)	MOTOR CONNECTOR	1

NO.	PART NUMBER	DESCRIPTION	QTY.
1	PT02E-14-18P(027)	RESOLVER/THERM CONNECTOR	1
2	PT02E-14-5P(027)	MOTOR CONNECTOR	1

NO.	PART NUMBER	DESCRIPTION	QTY.
1	PT02E-14-18P(027)	RESOLVER/THERM CONNECTOR	1
2	PT02E-14-5P(027)	MOTOR CONNECTOR	1

NO.	PART NUMBER	DESCRIPTION	QTY.
1	PT02E-14-18P(027)	RESOLVER/THERM CONNECTOR	1
2	PT02E-14-5P(027)	MOTOR CONNECTOR	1

NO.	PART NUMBER	DESCRIPTION	QTY.
1	PT02E-14-18P(027)	RESOLVER/THERM CONNECTOR	1
2	PT02E-14-5P(027)	MOTOR CONNECTOR	1

NO.	PART NUMBER	DESCRIPTION	QTY.
1	PT02E-14-18P(027)	RESOLVER/THERM CONNECTOR	1
2	PT02E-14-5P(027)	MOTOR CONNECTOR	1

NO.	PART NUMBER	DESCRIPTION	QTY.
1	PT02E-14-18P(027)	RESOLVER/THERM CONNECTOR	1
2	PT02E-14-5P(027)	MOTOR CONNECTOR	1

NO.	PART NUMBER	DESCRIPTION	QTY.
1	PT02E-14-18P(027)	RESOLVER/THERM CONNECTOR	1
2	PT02E-14-5P(027)	MOTOR CONNECTOR	1

NO.	PART NUMBER	DESCRIPTION	QTY.
1	PT02E-14-18P(027)	RESOLVER/THERM CONNECTOR	1
2	PT02E-14-5P(027)	MOTOR CONNECTOR	1

NO.	PART NUMBER	DESCRIPTION	QTY.
1	PT02E-14-18P(027)	RESOLVER/THERM CONNECTOR	1
2	PT02E-14-5P(027)	MOTOR CONNECTOR	1

NO.	PART NUMBER	DESCRIPTION	QTY.
1	PT02E-14-18P(027)	RESOLVER/THERM CONNECTOR	1
2	PT02E-14-5P(027)	MOTOR CONNECTOR	1

NO.	PART NUMBER	DESCRIPTION	QTY.
1	PT02E-14-18P(027)	RESOLVER/THERM CONNECTOR	1
2	PT02E-14-5P(027)	MOTOR CONNECTOR	1

NO.	PART NUMBER	DESCRIPTION	QTY.
1	PT02E-14-18P(027)	RESOLVER/THERM CONNECTOR	1
2	PT02E-14-5P(027)	MOTOR CONNECTOR	1

NO.	PART NUMBER	DESCRIPTION	QTY.
1	PT02E-14-18P(027)	RESOLVER/THERM CONNECTOR	1
2	PT02E-14-5P(027)	MOTOR CONNECTOR	1

NO.	PART NUMBER	DESCRIPTION	QTY.
1	PT02E-14-18P(027)	RESOLVER/THERM CONNECTOR	1
2	PT02E-14-5P(027)	MOTOR CONNECTOR	1

NO.	PART NUMBER	DESCRIPTION	QTY.
1	PT02E-14-18P(027)	RESOLVER/THERM CONNECTOR	1
2	PT02E-14-5P(027)	MOTOR CONNECTOR	1

NO.	PART NUMBER	DESCRIPTION	QTY.
1	PT02E-14-18P(027)	RESOLVER/THERM CONNECTOR	1
2	PT02E-14-5P(027)	MOTOR CONNECTOR	1

NO.	PART NUMBER	DESCRIPTION	QTY.
1	PT02E-14-18P(027)	RESOLVER/THERM CONNECTOR	1
2	PT02E-14-5P(027)	MOTOR CONNECTOR	1

NO.	PART NUMBER	DESCRIPTION	QTY.
1	PT02E-14-18P(027)	RESOLVER/THERM CONNECTOR	1
2	PT02E-14-5P(027)	MOTOR CONNECTOR	1

NO.	PART NUMBER	DESCRIPTION	QTY.
1	PT02E-14-18P(027)	RESOLVER/THERM CONNECTOR	1
2	PT02E-14-5P(027)	MOTOR CONNECTOR	1

NO.	PART NUMBER	DESCRIPTION	QTY.
1	PT02E-14-18P(027)	RESOLVER/THERM CONNECTOR	1
2	PT02E-14-5P(027)	MOTOR CONNECTOR	1

NO.	PART NUMBER	DESCRIPTION	QTY.
1	PT02E-14-18P(027)	RESOLVER/THERM CONNECTOR	1
2	PT02E-14-5P(027)	MOTOR CONNECTOR	1

NO.	PART NUMBER	DESCRIPTION	QTY.
1	PT02E-14-18P(027)	RESOLVER/THERM CONNECTOR	1
2	PT02E-14-5P(027)	MOTOR CONNECTOR	1

NO.	PART NUMBER	DESCRIPTION	QTY.
1	PT02E-14-18P(027)	RESOLVER/THERM CONNECTOR	1
2	PT02E-14-5P(027)	MOTOR CONNECTOR	1

NO.	PART NUMBER
-----	-------------