

MOTOR DATA @ 230 VAC (TRAP)

MOTOR PARAMETERS	UNITS	VALUE
HORSEPOWER	HP RATED	1.20
KILOWATTS	KW RATED	0.88
MAX. OPERATING SPEED	N MAX	2100
SPEED @ RATED TORQUE	RPM	1500
* CONTINUOUS RATED TORQUE @ 1500 RPM	IN-LBS[Nm]	50.0[5.6]
* CONTINUOUS STALL TORQUE	IN-LBS[Nm]	54.0[6.1]
CONTINUOUS LINE CURRENT	AMPS	4.4
PEAK TORQUE	Tpk	189.1[21.3]
PEAK CURRENT	AMPS	15.3
MAX. THEORETICAL ACCEL.	RAD/SEC ²	54,029
TORQUE SENSITIVITY	Kt IN-LBS/AMP[Nm/AMP]	12.4[1.42]
BACK EMF (LINE TO LINE)	Vrms/Krpm	110.0
D.C. RESISTANCE (P-P)	OHMS	3.3
INDUCTANCE (P-P)	MILLIHENRIES	24.4
ROTOR INERTIA	Jm [IN-LBS-SEC ²] [Kg-M ²]	0.0035[0.00039]
STATIC FRICTION	Tf [IN-LBS] [Nm]	1.0[0.11]

*25°C AMBIENT WITH A MAXIMUM CASE TEMPERATURE OF 100°C ON MOTOR. MOTOR MOUNTED ON A 12" X 12" X 1/2" ALUMINUM HEATSINK. THERMOSTAT IN STATOR WINDINGS WILL OPEN IF WINDING TEMPERATURE EXCEEDS 155°C. THIS ALLOWS FOR AN APPROXIMATE +10% HEADROOM IN THE CONTINUOUS TORQUE RATING BEFORE THERMOSTAT OPENS.

MECHANICAL NOTES:

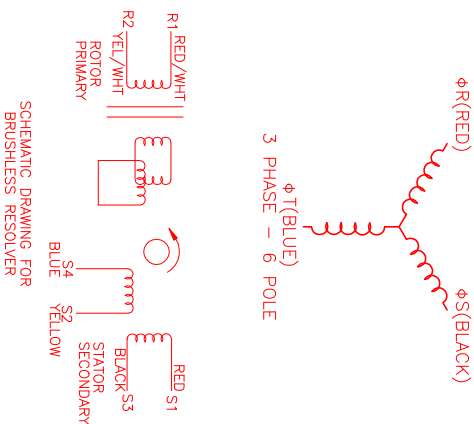
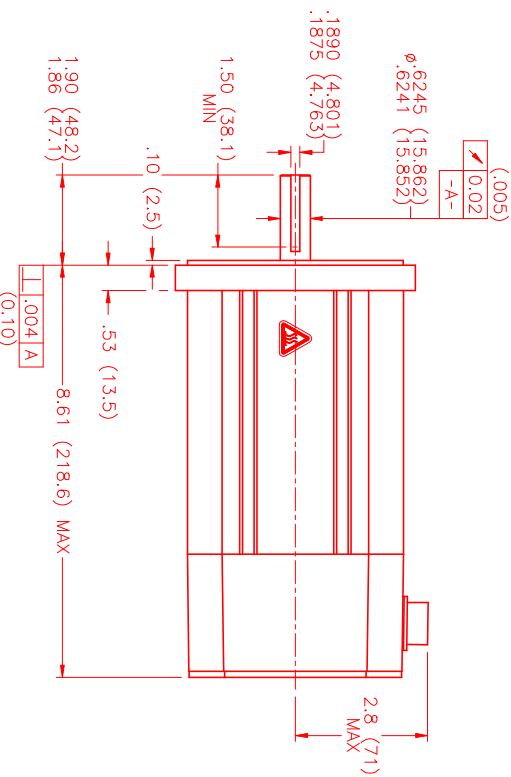
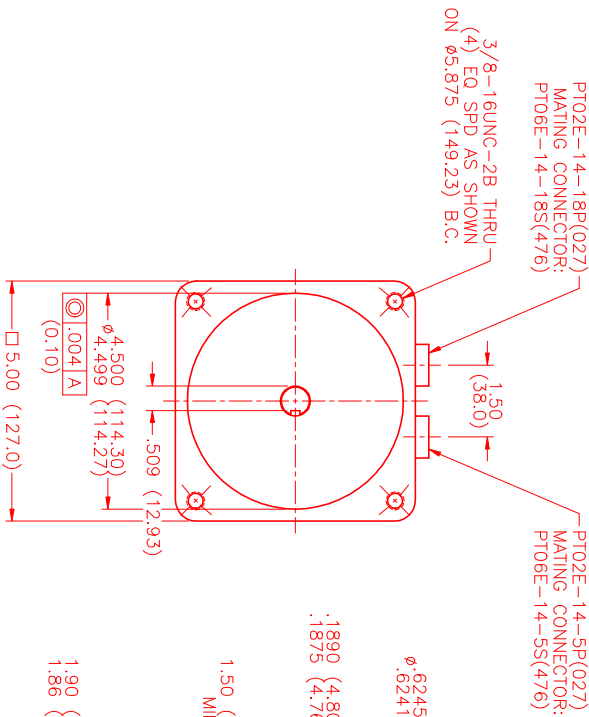
1. AXIAL LOAD: 50 LBS MAX
2. RADIAL LOAD: 100 LBS MAX @ 1" FROM FACE
3. MOTOR SEALED TO IP65.
4. MOTOR WEIGHT: 18.4 LBS. [8.3 kg]
5. MOTOR FINISH: BLACK EPOXY
6. MOTOR OUTPUT SHAFT: STAINLESS STEEL
7. INCHES (MILLIMETERS)

CONNECTION CHART
MOTOR CONNECTOR:
PT02E-14-5P(027)
(270-00026)

MOTOR WIRE LEADS	WIRE FUNCTION	WIRE COLOR
A	ΦR	RED
B	ΦS	BLACK
C	ΦT	BLUE
D	PE GND	GRN/YEL
E	-	-

RESOLVER/THERM CONNECTOR:
PT02E-14-18P(027)
(270-00024)

RES/THERM WIRE LEADS	PIN	WIRE FUNCTION	WIRE COLOR
	U	THERM	BLACK
	N	THERM	BLACK
	H	SIN	YELLOW
	G	COS GND	BLACK
	S	COS	RED
	F	SIN GND	BLUE
	R	REF GND	YEL/WHI
	E	REF	RED/WHI
	D	RES SHLD	GRN/YEL
	P	GND	GRN/YEL
	A	-	-
	B	-	-
	C	-	-
	J	-	-
	K	-	-
	L	-	-
	M	-	-
	T	-	-



SCHEMATIC DRAWING FOR BRUSHLESS RESOLVER

REV.	DESCRIPTION	DATE	APPD.
1	PRELIMINARY	1/5/98	MS

NO.	PART NUMBER	DESCRIPTION	QTY.
UNLESS SPECIFIED			
DECIMAL	XXX # XXX		
FRACTIONAL	X # XXX		
ANGLE	1/2		
SCALE:	MS		
DATE:	11/16/98		
DESIGNED:			
CHECKED:			
DRAWN:	MPM1141BTG6G1N		
SCALE:	1/2:1		

MTS Systems Corporation
Automation Division

RESOLVER ASSEMBLY FOR 230VAC MOTOR. SEE DRAWING FOR DIMENSIONS AND TOLERANCES. THIS DRAWING IS UNLESS OTHERWISE SPECIFIED.

TITLE: "B"/TRAP/230/ENG/RES/CONN
MATERIAL:

APPROVED: