

MOTOR DATA @ 230 VAC (TRAP)

MOTOR PARAMETERS	UNITS	VALUE
HORSEPOWER	HP RATED	1.2
	KW	.88
MAX. OPERATING SPEED	N MAX	2100
SPEED @ RATED TORQUE	RPM	1500
* CONTINUOUS RATED TORQUE @ 1500 RPM	IN-LBS[Nm]	50.0[5.6]
* CONTINUOUS STALL TORQUE	IN-LBS[Nm]	54.0[6.1]
CONTINUOUS LINE CURRENT	AMPS	4.4
PEAK CURRENT	IN-LBS[Nm]	189.1[21.3]
	AMPS	15.3
MAX. THEORETICAL ACCEL.	RAD/SEC ²	54,029
TORQUE SENSITIVITY	Kt IN-LBS/AMPI Nm/AMP	12.4[1.42]
BACK EMF (LINE TO LINE)	Vrms/Krpm	110.0
D.C. RESISTANCE (P-P)	OHMS	3.3
INDUCTANCE (P-P)	MILLIHENRIES	24.4
ROTOR INERTIA	Jm IN-LBS-SEC ² [Kg-M ²]	.0035[.00039]
STATIC FRICTION	Tf IN-LBS[Nm]	1.0[.11]

*25°C AMBIENT WITH A MAXIMUM CASE TEMPERATURE OF 100°C ON MOTOR. MOTOR MOUNTED ON A 12" X 12" X 1/2" ALUMINUM HEATSINK. THERMOSTAT IN STATOR WINDINGS WILL OPEN IF WINDING TEMPERATURE EXCEEDS 155°C. THIS ALLOWS FOR AN APPROXIMATE +10% HEADROOM IN THE CONTINUOUS TORQUE RATING BEFORE THERMOSTAT OPENS.

MECHANICAL NOTES:

1. AXIAL LOAD: 50 LBS MAX
2. RADIAL LOAD: 100 LBS MAX @ 1" FROM FACE
3. MOTOR SEALED TO IP65.
4. MOTOR WEIGHT: 17.8 LBS. [8.1 Kg]
5. MOTOR FINISH: BLACK EPOXY
6. MOTOR OUTPUT SHAFT: STAINLESS STEEL
7. INCHES (MILLIMETERS)

ENCODER: (.290-00052)

OH48-2000P6-L6-5V

CONNECTION CHART

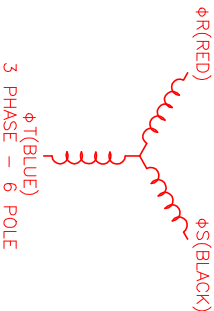
MOTOR CONNECTOR:
PT02E-14-5P(027)
(270-00026)

PIN	WIRE FUNCTION	WIRE COLOR
A	ΦR	RED
B	ΦS	BLACK
C	ΦT	BLUE
D	PE GND	GRN/YEL.
E	-	-

ENCODER/THERM CONNECTOR:

PT02E-14-18P(027)
(270-00024)

PIN	WIRE FUNCTION	WIRE COLOR
T	GROUND	BLACK
K	+5VDC	RED
B	CH A	BLUE
C	CH A \	BLUE/BLK
N	CH B	GREEN
P	CH B \	GRN/BLK
M	CH Z	YELLOW
U	CH Z \	YEL/BLK
E	CH U	BROWN
R	CH U \	BRN/BLK
F	CH V	GRAY
S	CH V \	GRAY/BLK
G	CH W	WHITE
H	CH W \	WHT/BLK
D	GND/CABLE	SHLD.
A	THERM	BLACK
L	THERM	BLACK
J	GND	GRN/YEL

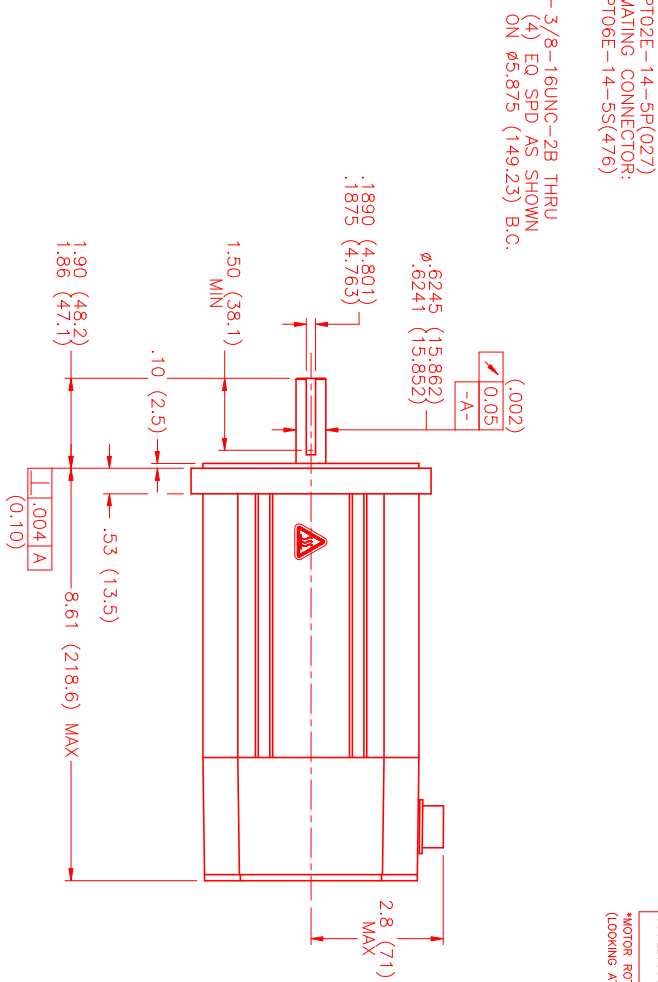
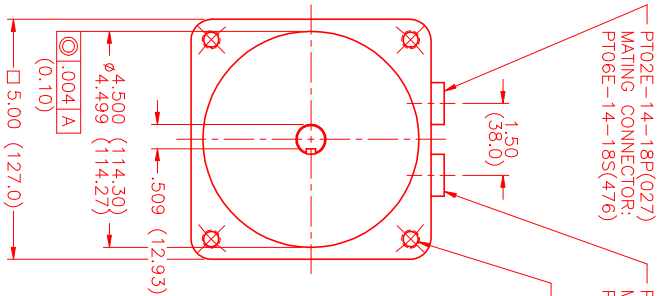


MOTOR & HALL POSITION CHART

HALL LEADS	BROWN	GRAY	WHITE
MOTOR LEADS	BLACK respect to RED	RED respect to BLUE	BLUE respect to BLACK

VIEW ON THE OSCILLOSCOPE

*MOTOR ROTATION CCW (COUNTER CLOCKWISE)
(LOOKING AT THE FACE OF THE MOTOR)



NO.	PART NUMBER	DESCRIPTION	QTY.
UNLESS SPECIFIED			
DESIGN: 2004-08-05			
DATE: 2004-08-05			
SCALE: 1/2"			
BY: MVS			
CHECKED: 8/99			
DATE: 8/99			
APPROVED:			
ISSUANCE NUMBER: MPM1141BTG6JN1N			
SCALE: 1/2:1			

REV.	DESCRIPTION	DATE	APPD.
PRELIMINARY		4/19/00	LIN

DATE: 8/19/00
REV: 4/19/00
DESCRIPTION: MPM1141BTG6JN1N
ISSUANCE NUMBER: MPM1141BTG6JN1N

MTS Systems Corporation
Automation Division