

MOTOR DATA @ 230 VAC (TRAP)

MOTOR PARAMETERS	UNITS	VALUE
MOTOR HORSEPOWER	HP RATED	1.2
	KW RATED	.88
MAX OPERATING SPEED	N MAX	2100
SPEED @ RATED TORQUE	RPM	1500
* CONTINUOUS RATED TORQUE @ 1500 RPM	N-LBS[Nm]	50.0 [5.6]
* CONTINUOUS STALL TORQUE	N-LBS[Nm]	54.0 [6.1]
CONTINUOUS LINE CURRENT	AMPS	4.4
PEAK TORQUE	N-LBS[Nm]	189.1 [21.3]
PEAK CURRENT	AMPS	15.3
MAX THEORETICAL ACCEL	RAD/SEC ²	48,487
TORQUE SENSITIVITY	Kt [N-LBS/AMP/Nm/AMP]	12.4 [1.42]
BACK EMF (LINE TO LINE)	Vrms/Krpm	110.0
D.C. RESISTANCE (P-P)	OHMS	3.3
INDUCTANCE (P-P)	MILLIHENRIES	24.4
ROTOR INERTIA W/BRAKE	Jm [N-LBS-SEC ² Kg-M ²]	.00391 [0.0044]
STATIC FRICTION	Tf [N-LBS[Nm]]	1.0 [11]

*25°C AMBIENT WITH A MAXIMUM CASE TEMPERATURE OF 100°C ON MOTOR. MOTOR MOUNTED ON A 12" X 12" X 1/2" ALUMINUM HEATSINK. THERMOSTAT IN STATOR WINDINGS WILL OPEN IF WINDING TEMPERATURE EXCEEDS 155°C. THIS ALLOWS FOR AN APPROXIMATE +10% HEADROOM IN THE CONTINUOUS TORQUE RATING BEFORE THERMOSTAT OPENS.

- MECHANICAL NOTES:**
- AXIAL LEADS: 50 LBS MAX
 - RADIAL LOAD: 100 LBS MAX @ 1" FROM FACE
 - MOTOR SEALED TO IP65,
 - MOTOR WEIGHT: 23.1 LBS [10.5 kg]
 - MOTOR FINISH: BLACK EPOXY
 - MOTOR OUTPUT SHAFT: STAINLESS STEEL
 - MILLIMETERS (INCHES)

ENCODER: (290-D0052)
OHMS-2000P6-L6-SV
FAILURE BRAKE:
MIN HOLDING TORQUE: 240 IN-LBS
INPUT VOLTAGE: 24 VOLTS

CONNECTION CHART

MOTOR/BRAKE CONNECTOR:
PT02E-16-BP(027)
(270-00032)

ENCODER/THERM CONNECTOR:
PT02E-14-1BP(027)
(270-00024)

MOTOR/BRAKE	WIRE FUNCTION	WIRE COLOR
A	4R	RED
B	4S	BLACK
C	4T	BLUE
D	PE GND	GRN/YEL
E	BRK SHLD	-
F	BRK (+)	DIODE
G	BRK (-)	DIODE
H	-	-

ENC/THERM	WIRE FUNCTION	WIRE COLOR
T	GROUND	BLACK
K	+5VDC	RED
B	CH A	BLUE
C	CH A	BLUE/BLK
N	CH B	GREEN
P	CH B	GRN/BLK
M	CH Z	YELLOW
E	CH U	YELLOW
U	CH U	BROWN
R	CH V	BRN/BLK
F	CH V	GRAY
S	CH V	GRAY/BLK
G	CH W	WHITE
H	CH W	WHT/BLK
D	GND/CABLE	SHLD
A	THERM	BLACK
L	THERM	BLACK
J	GND	GRN/YEL

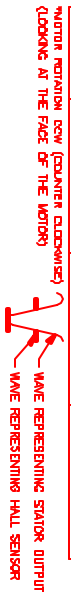
REV: 1/14/23/MEI/COU/BRK
REVISIONS
DATE: 7/13/99
APP: MVS
PRELIMINARY

1/21

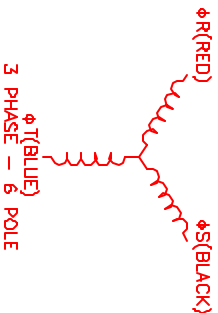
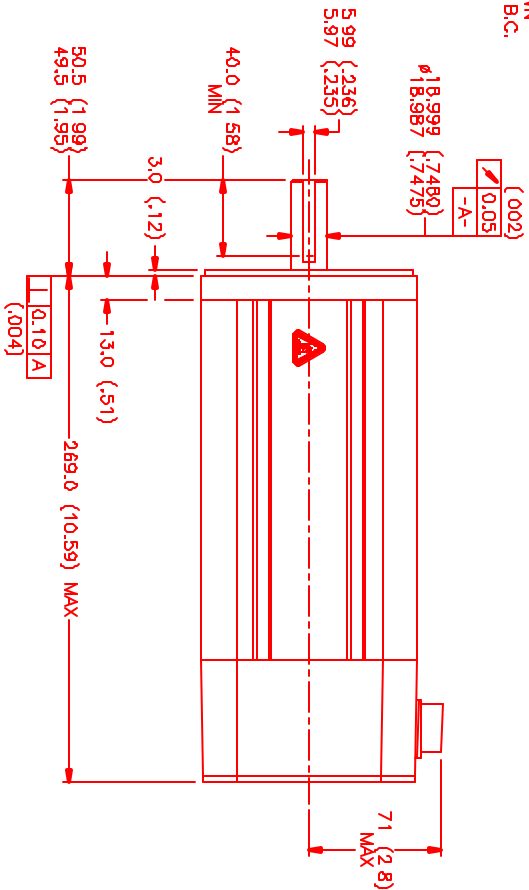
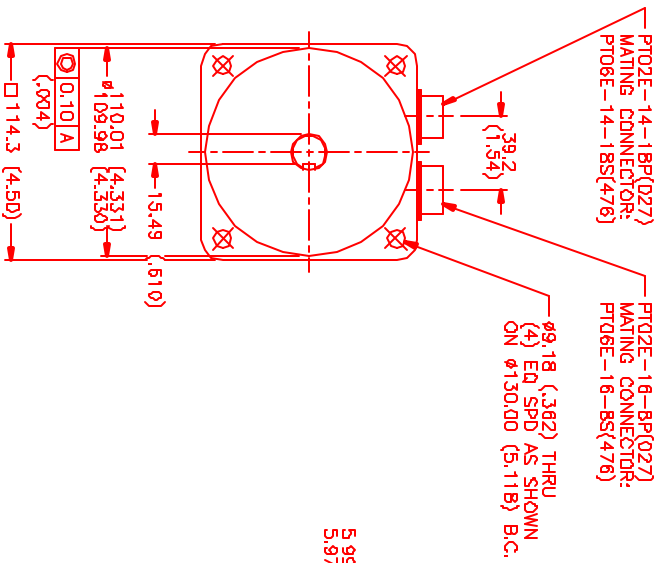
REV	DESCRIPTION	DATE	APP
1	ISSUED	7/13/99	MVS

MOTOR & HALL POSITION CHART

HALL LEADS	BROWN	GRAY	WHITE
MOTOR LEADS	BLACK (wired to RED)	RED (wired to BLUE)	BLUE (wired to BLACK)



WAVE REPRESENTING STATOR OUTPUT (LOOKING AT THE FACE OF THE MOTOR)



NO.	PART NUMBER	DESCRIPTION	QTY.
1	MVS	MVS Systems Corporation Automation Division	1
2	PT02E-14-1BP(027)	Encoder Connector	1
3	PT02E-16-BP(027)	Motor Connector	1
4	OHMS-2000P6-L6-SV	Encoder	1
5	290-D0052	Encoder	1
6	130-00024	Encoder	1
7	130-00032	Motor	1
8	130-00044	Motor	1
9	130-00052	Motor	1
10	130-00060	Motor	1
11	130-00068	Motor	1
12	130-00076	Motor	1
13	130-00084	Motor	1
14	130-00092	Motor	1
15	130-00100	Motor	1
16	130-00108	Motor	1
17	130-00116	Motor	1
18	130-00124	Motor	1
19	130-00132	Motor	1
20	130-00140	Motor	1
21	130-00148	Motor	1
22	130-00156	Motor	1
23	130-00164	Motor	1
24	130-00172	Motor	1
25	130-00180	Motor	1
26	130-00188	Motor	1
27	130-00196	Motor	1
28	130-00204	Motor	1
29	130-00212	Motor	1
30	130-00220	Motor	1
31	130-00228	Motor	1
32	130-00236	Motor	1
33	130-00244	Motor	1
34	130-00252	Motor	1
35	130-00260	Motor	1
36	130-00268	Motor	1
37	130-00276	Motor	1
38	130-00284	Motor	1
39	130-00292	Motor	1
40	130-00300	Motor	1
41	130-00308	Motor	1
42	130-00316	Motor	1
43	130-00324	Motor	1
44	130-00332	Motor	1
45	130-00340	Motor	1
46	130-00348	Motor	1
47	130-00356	Motor	1
48	130-00364	Motor	1
49	130-00372	Motor	1
50	130-00380	Motor	1
51	130-00388	Motor	1
52	130-00396	Motor	1
53	130-00404	Motor	1
54	130-00412	Motor	1
55	130-00420	Motor	1
56	130-00428	Motor	1
57	130-00436	Motor	1
58	130-00444	Motor	1
59	130-00452	Motor	1
60	130-00460	Motor	1
61	130-00468	Motor	1
62	130-00476	Motor	1
63	130-00484	Motor	1
64	130-00492	Motor	1
65	130-00500	Motor	1
66	130-00508	Motor	1
67	130-00516	Motor	1
68	130-00524	Motor	1
69	130-00532	Motor	1
70	130-00540	Motor	1
71	130-00548	Motor	1
72	130-00556	Motor	1
73	130-00564	Motor	1
74	130-00572	Motor	1
75	130-00580	Motor	1
76	130-00588	Motor	1
77	130-00596	Motor	1
78	130-00604	Motor	1
79	130-00612	Motor	1
80	130-00620	Motor	1
81	130-00628	Motor	1
82	130-00636	Motor	1
83	130-00644	Motor	1
84	130-00652	Motor	1
85	130-00660	Motor	1
86	130-00668	Motor	1
87	130-00676	Motor	1
88	130-00684	Motor	1
89	130-00692	Motor	1
90	130-00700	Motor	1
91	130-00708	Motor	1
92	130-00716	Motor	1
93	130-00724	Motor	1
94	130-00732	Motor	1
95	130-00740	Motor	1
96	130-00748	Motor	1
97	130-00756	Motor	1
98	130-00764	Motor	1
99	130-00772	Motor	1
100	130-00780	Motor	1
101	130-00788	Motor	1
102	130-00796	Motor	1
103	130-00804	Motor	1
104	130-00812	Motor	1
105	130-00820	Motor	1
106	130-00828	Motor	1
107	130-00836	Motor	1
108	130-00844	Motor	1
109	130-00852	Motor	1
110	130-00860	Motor	1
111	130-00868	Motor	1
112	130-00876	Motor	1
113	130-00884	Motor	1
114	130-00892	Motor	1
115	130-00900	Motor	1
116	130-00908	Motor	1
117	130-00916	Motor	1
118	130-00924	Motor	1
119	130-00932	Motor	1
120	130-00940	Motor	1
121	130-00948	Motor	1
122	130-00956	Motor	1
123	130-00964	Motor	1
124	130-00972	Motor	1
125	130-00980	Motor	1
126	130-00988	Motor	1
127	130-00996	Motor	1
128	130-01004	Motor	1
129	130-01012	Motor	1
130	130-01020	Motor	1
131	130-01028	Motor	1
132	130-01036	Motor	1
133	130-01044	Motor	1
134	130-01052	Motor	1
135	130-01060	Motor	1
136	130-01068	Motor	1
137	130-01076	Motor	1
138	130-01084	Motor	1
139	130-01092	Motor	1
140	130-01100	Motor	1
141	130-01108	Motor	1
142	130-01116	Motor	1
143	130-01124	Motor	1
144	130-01132	Motor	1
145	130-01140	Motor	1
146	130-01148	Motor	1
147	130-01156	Motor	1
148	130-01164	Motor	1
149	130-01172	Motor	1
150	130-01180	Motor	1
151	130-01188	Motor	1
152	130-01196	Motor	1
153	130-01204	Motor	1
154	130-01212	Motor	1
155	130-01220	Motor	1
156	130-01228	Motor	1
157	130-01236	Motor	1
158	130-01244	Motor	1
159	130-01252	Motor	1
160	130-01260	Motor	1
161	130-01268	Motor	1
162	130-01276	Motor	1
163	130-01284	Motor	1
164	130-01292	Motor	1
165	130-01300	Motor	1
166	130-01308	Motor	1
167	130-01316	Motor	1
168	130-01324	Motor	1
169	130-01332	Motor	1
170	130-01340	Motor	1
171	130-01348	Motor	1
172	130-01356	Motor	1
173	130-01364	Motor	1
174	130-01372	Motor	1
175	130-01380	Motor	1
176	130-01388	Motor	1
177	130-01396	Motor	1
178	130-01404	Motor	1
179	130-01412	Motor	1
180	130-01420	Motor	1
181	130-01428	Motor	1
182	130-01436	Motor	1
183	130-01444	Motor	1
184	130-01452	Motor	1
185	130-01460	Motor	1
186	130-01468	Motor	1
187	130-01476	Motor	1
188	130-01484	Motor	1
189	130-01492	Motor	1
190	130-01500	Motor	1
191	130-01508	Motor	1
192	130-01516	Motor	1
193	130-01524	Motor	1
194	130-01532	Motor	1
195	130-01540	Motor	1
196	130-01548	Motor	1
197	130-01556	Motor	1
198	130-01564	Motor	1
199	130-01572	Motor	1
20			