

MOTOR DATA @ 230 VAC (TRAP)

MOTOR PARAMETERS	UNITS	VALUE
MOTOR HORSEPOWER	HP	3.3
KILOWATTS	KW	2.5
MAX OPERATING SPEED	N MAX	4200
SPEED @ RATED TORQUE	N RATED	3000
* CONTINUOUS STALL TORQUE	IN-LBS[Nm]	69 [1.7.8]
* CONTINUOUS LINE CURRENT	AMPS	8.3 [0.9.3]
PEAK CURRENT	AMPS	13.4
MAX THEORETICAL ACCEL	AD/SEC ²	290.5 [32.7]
TORQUE SENSITIVITY	Kt [IN-LBS/AMPTNm/AMPI]	46.8
BACK EMF (LINE TO LINE)	Vrms/Krpm	6.2 [0.71]
D.C. RESISTANCE (P-P)	OHMS	55.0
INDUCTANCE (P-P)	MILLIHENRIES	0.40
ROTOR INERTIA W/BRAKE	Jm [IN-LBS-SEC ² /Kg-M ²]	2.8
STATIC FRICTION	Tf [IN-LBS/Nm]	.0070 [0.0079]

*25°C AMBIENT WITH A MAXIMUM CASE TEMPERATURE OF 100°C ON MOTOR. MOTOR MOUNTED ON A 12" X 12" X 1/2" ALUMINUM HEATSINK. THERMOSTAT IN STATOR WINDINGS WILL OPEN IF WINDING TEMPERATURE EXCEEDS 155°C. THIS ALLOWS FOR AN APPROXIMATE +10% HEADROOM IN THE CONTINUOUS TORQUE RATING BEFORE THERMOSTAT OPENS.

- MECHANICAL NOTES:**
- AXIAL LOAD: 50 LBS MAX
 - RADIAL LOAD: 100 LBS MAX @ 1" FROM FACE
 - MOTOR SEALED TO IP65.
 - MOTOR WEIGHT: 33.7 LBS. [15.3 Kg]
 - MOTOR FINISH: BLACK EPOXY
 - MOTOR OUTPUT SHAFT: STAINLESS STEEL
 - INCHES (MILLIMETERS)

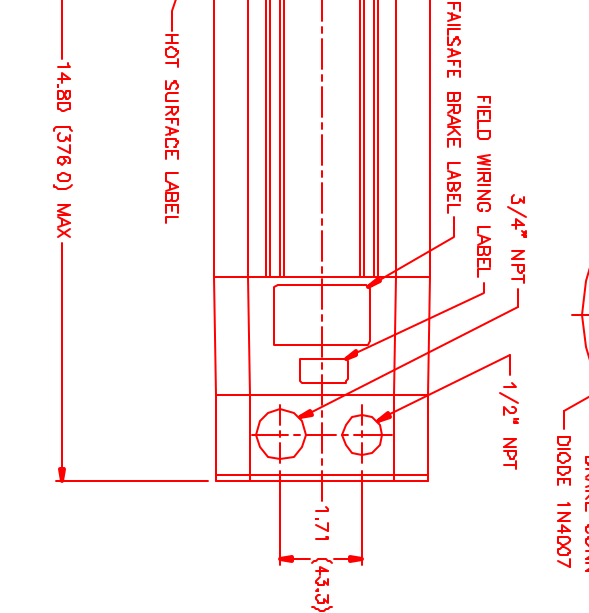
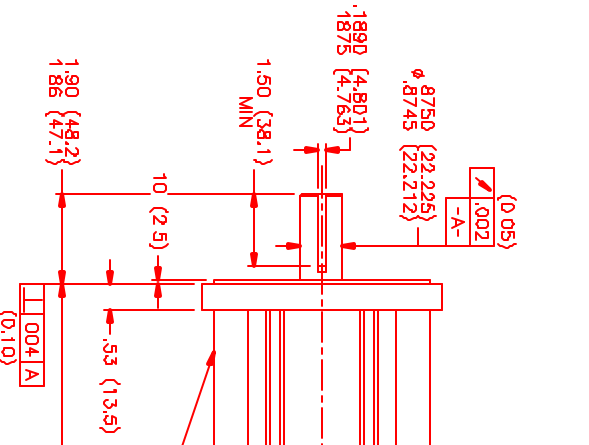
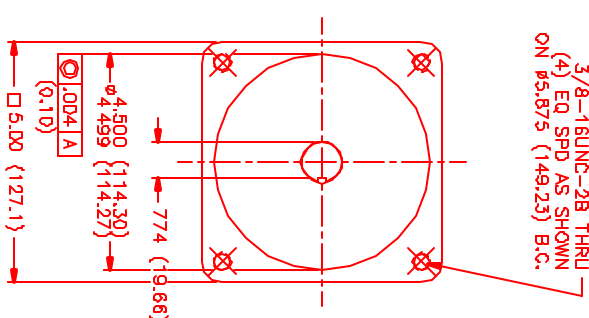
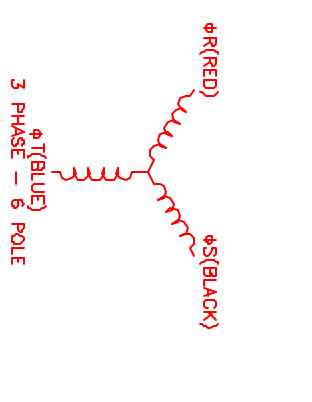
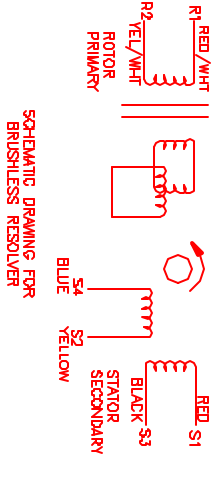
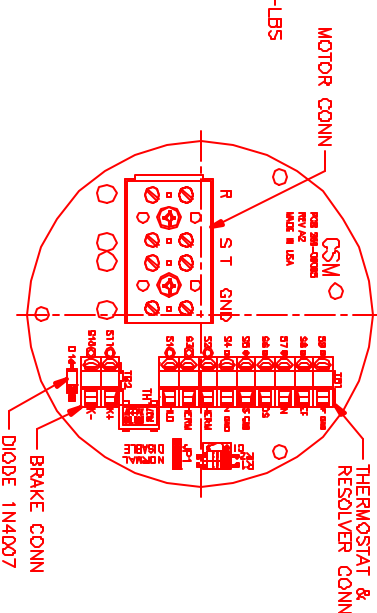
CONNECTION CHART

MOTOR WIRE LEADS	WIRE FUNCTION	WIRE COLOR
TERMINAL	ΦR	RED
ΦS	BLACK	
ΦT	BLUE	
PE GND	GRN/YEL	

RES/BRAKE WIRE LEADS	WIRE FUNCTION	WIRE COLOR
S11	BRK (+)	BLUE
S10	BRK (-)	BLUE
S9	REF GND	YEL/WHI
S8	REF	RED/WHI
S7	SIN	YELLOW
S6	COS	RED
S5	COS GND	BLACK
S4	SIN GND	BLUE
S3	THERM	BLACK
S2	THERM	BLACK
S1	RES SHLD	GRN/YEL

TITLE: 1/230/ENG/RES/NPT/BRK
 REVISIONS: 1/24/21 G66.3/R

REV	DESCRIPTION	DATE	APP'D.
PRELIMINARY		7/9/99	M/S



NO.	PART NUMBER	DESCRIPTION	QTY.
1	M/S	M/S Systems Corporation Automation Division	
TITLE: 1/230/ENG/RES/NPT/BRK DATE: 7/9/99 DRAWN: MPM1142ATG66.3/R APPROVED:			