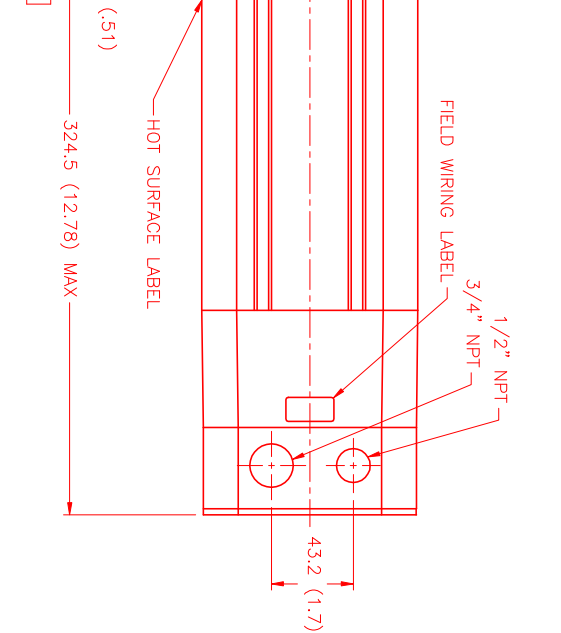
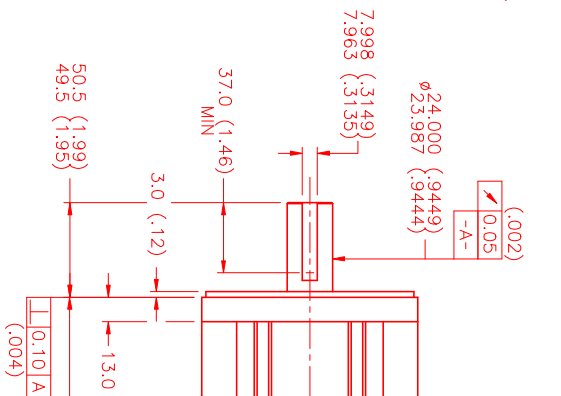
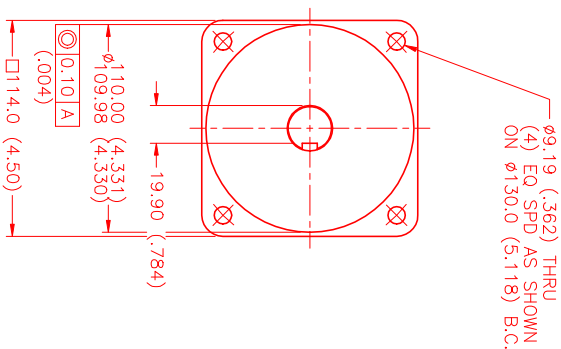


MOTOR DATA @ 230 VAC (TRAP)

MOTOR PARAMETERS	UNITS	VALUE
HORSEPOWER	HP RATED	1.8
KILOWATTS	KW RATED	1.33
MAX. OPERATING SPEED	N MAX RPM	2100
SPEED @ RATED TORQUE	N RATED RPM	1500
* CONTINUOUS RATED TORQUE @ 1500 RPM	N-LBS[Nm]	75.0 [8.4]
* CONTINUOUS STALL TORQUE	N-LBS[Nm]	83.0 [9.3]
CONTINUOUS LINE CURRENT	AMPS	6.7
PEAK TORQUE	Tpk N-LBS[Nm]	290.5 [32.7]
MAX. THEORETICAL ACCEL.	AMPS	23.4
TORQUE SENSITIVITY	RAD/SEC ²	44.015
BACK EMF (LINE TO LINE)	Kt IN-LBS/AMP[Nm/AMP]	12.4 [1.42]
D.C. RESISTANCE (P-P)	Vrms/Krpm	110.0
INDUCTANCE (P-P)	OHMS	1.8
ROTOR INERTIA	MILLIHENRIES	12.6
STATIC FRICTION	Jm [N-LBS-SEC ²] [Kg-M ²]	.0066 [0.0074]
	Tf [N-LBS] [Nm]	1.4 [0.16]

*25°C AMBIENT WITH A MAXIMUM CASE TEMPERATURE OF 100°C ON MOTOR. MOTOR MOUNTED ON A 12" X 12" X 1/2" ALUMINUM HEATSINK. THERMOSTAT IN STATOR WINDINGS WILL OPEN IF WINDING TEMPERATURE EXCEEDS 155°C. THIS ALLOWS FOR AN APPROXIMATE +10% HEADROOM IN THE CONTINUOUS TORQUE RATING BEFORE THERMOSTAT OPENS.

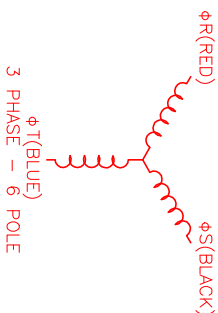
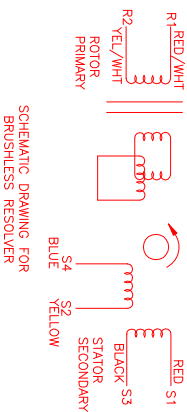
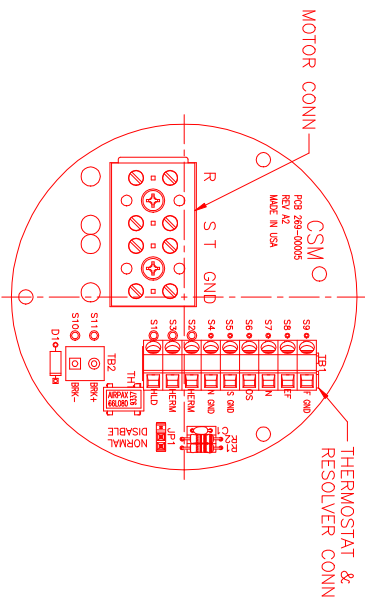
- MECHANICAL NOTES:**
1. AXIAL LOAD: 50 LBS MAX
 2. RADIAL LOAD: 100 LBS MAX @ 1" FROM FACE
 3. MOTOR SEALED TO IP65.
 4. MOTOR WEIGHT: 27.6 LBS. [12.5 Kg]
 5. MOTOR FINISH: BLACK EPOXY
 6. MOTOR OUTPUT SHAFT: STAINLESS STEEL
 7. MILLIMETERS (INCHES)



CONNECTION CHART

MOTOR WIRE LEADS	WIRE FUNCTION	WIRE COLOR
S9	REF GND	RED
S8	REF	BLACK
S7	SIN	BLUE
S6	COS	GRN/YEL

RES/THERM WIRE LEADS	WIRE FUNCTION	WIRE COLOR
S5	COS GND	BLACK
S4	SIN GND	BLUE
S3	THERM	BLACK
S2	THERM	BLACK
S1	RES SHLD	GRN/YEL



REV: 8 / TRAP / 230 / MET / RES / NPT

REV.	DESCRIPTION	DATE	APPD.
PRELIMINARY		6/18/99	MVS

NO.	PART NUMBER	DESCRIPTION	QTY.
UNLESS SPECIFIED			
DATE: 6/11/99			
DESIGNER: MVS			
CHECKED:			
APPROVED:			

MTS
Automation Division

RESISTOR VALUE FOR RESOLUTION IS INDICATED IN THE CONNECTION DIAGRAM. THE RESOLUTION IS 1/2° PER STEP. THE RESOLUTION IS 1/2° PER STEP. THE RESOLUTION IS 1/2° PER STEP. THE RESOLUTION IS 1/2° PER STEP.

SCALE: 1/2:1