

④ MOTOR DATA @ 460 VAC (TRAP)

MOTOR PARAMETERS	UNITS	VALUE
MOTOR HORSEPOWER	HP	4.8
KILOWATTS	KW	3.4
MAX OPERATING SPEED	N MAX	4200
SPEED @ RATED TORQUE	N RATED	3000
* CONTINUOUS RATED TORQUE @ 3000 RPM	IN-LBS[Nm]	96.8[10.8]
* CONTINUOUS STALL TORQUE	IN-LBS[Nm]	116.2[13.1]
CONTINUOUS LINE CURRENT	AMPS	9.4
PEAK TORQUE	IN-LBS[Nm]	406.7[46.7]
PEAK CURRENT	AMPS	32.8
MAX THEORETICAL ACCEL	RAD/SEC <sup>2</sup>	41,081
TORQUE SENSITIVITY	K <sub>t</sub> [IN-LBS/AMPI[Nm/AMPI]	12.4[1.40]
BACK EMF (LINE TO LINE)	Vrms/Krpm	110.0
D.C. RESISTANCE (P-P)	OHMS	.95
INDUCTANCE (P-P)	MILLIHENRIES	7.8
ROTOR INERTIA W/BRAKE	Jm [IN-LBS-SEC <sup>2</sup> [Kg-M <sup>2</sup> ]	.00991[0.012]
STATIC FRICTION	Tf [IN-LBS[Nm]	1.8[0.20]

\*25°C AMBIENT WITH A MAXIMUM CASE TEMPERATURE OF 100°C ON MOTOR. MOTOR MOUNTED ON A 12" X 12" X 1 1/2" ALUMINUM HEATSINK. THERMOSTAT IN STATOR WINDINGS WILL OPEN IF WINDING TEMPERATURE EXCEEDS 155°C. THIS ALLOWS FOR AN APPROXIMATE +10% HEADROOM IN THE CONTINUOUS TORQUE RATING BEFORE THERMOSTAT OPENS.

- MECHANICAL NOTES:**
- AXIAL LOAD: 50 LBS MAX
  - RADIAL LOAD: 100 LBS MAX @ 1" FROM FACE
  - MOTOR SEALED TO IP65.
  - MOTOR WEIGHT: 42.6 LBS. [19.3 Kg]
  - MOTOR FINISH: BLACK EPOXY
  - MOTOR OUTPUT SHAFT: STAINLESS STEEL
  - INCHES (MILLIMETERS)

CONNECTION CHART

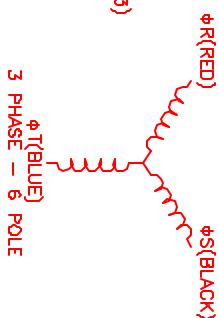
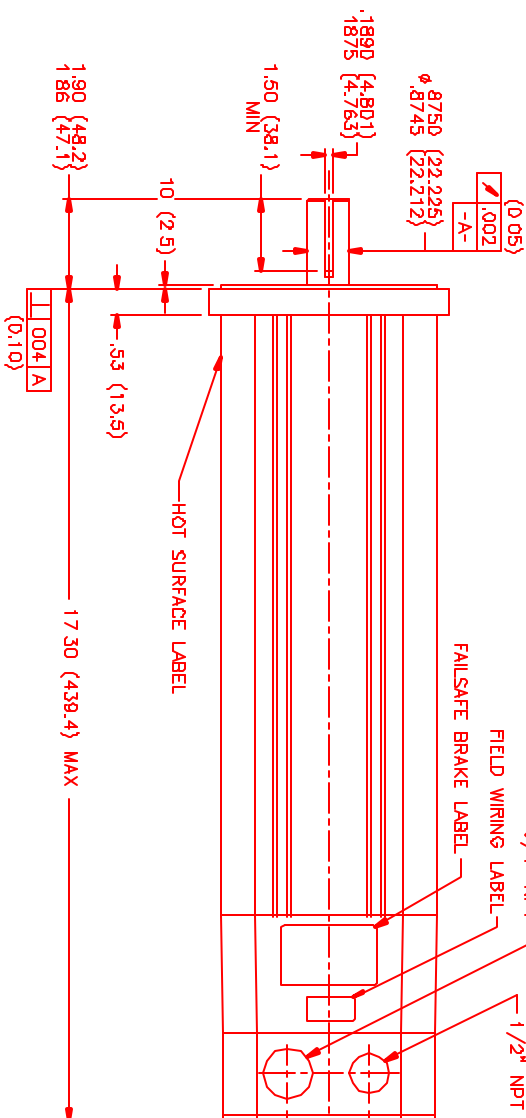
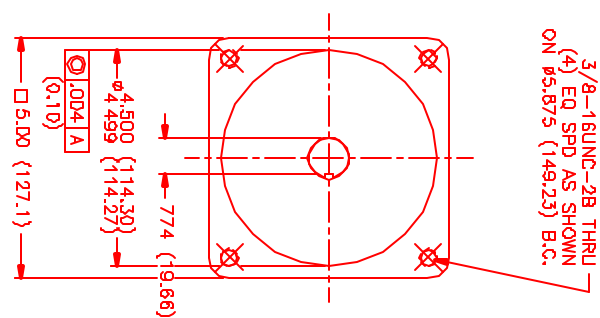
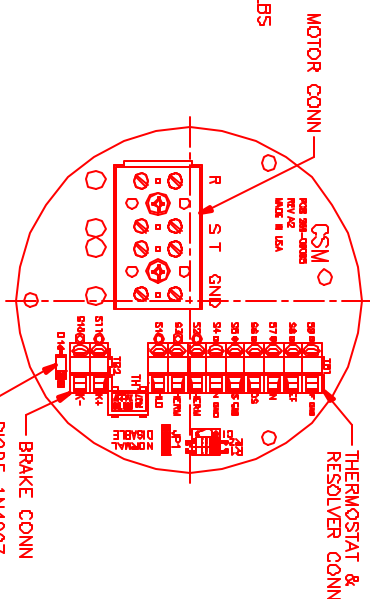
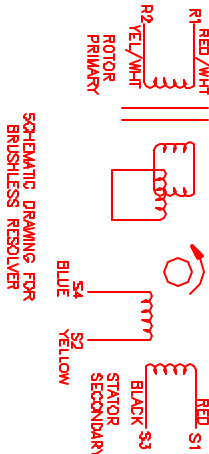
MOTOR WIRE LEADS	WIRE FUNCTION	WIRE COLOR
S11	BRK (+)	BLUE
S12	BRK (-)	BLUE
S9	REF GND	YEL/WHIT
S8	REF	RED/WHIT
S7	SIN	YELLOW
S6	COS	RED
S5	COS GND	BLACK
S4	SIN GND	BLUE
S3	THERM	BLACK
S2	THERM	BLACK
S1	RES SHLD	GRN/YEL

RES/THERM/BRAKE WIRE LEADS	WIRE FUNCTION	WIRE COLOR
S11	BRK (+)	BLUE
S12	BRK (-)	BLUE
S9	REF GND	YEL/WHIT
S8	REF	RED/WHIT
S7	SIN	YELLOW
S6	COS	RED
S5	COS GND	BLACK
S4	SIN GND	BLUE
S3	THERM	BLACK
S2	THERM	BLACK
S1	RES SHLD	GRN/YEL

REV. 1/10/140/ENG/RES/NT/BRK 18288 MPM1143CTJ6G3R

REV.	DESCRIPTION	DATE	APP'D.
PRELIMINARY		2/20/01	M/S
A	E.C.O. - 2023	4/3/02	AJS

REVISIONS



NO.	PART NUMBER	DESCRIPTION	QTY.
1	MPS Systems Corporation Automation Division		
TITLE: ④ TRAP/460/ENG/RES/INT/BRK A DATE: 2/20/01 DRAWN: M/S APPROVED: MPM1143CTJ6G3R SCALE: 1/2"=1"			