

### MOTOR DATA @ 230 VAC (TRAP)

MOTOR PARAMETERS	UNITS	VALUE
HORSEPOWER	HP	6.5
KILOWATTS	KW	4.9
MAX. OPERATING SPEED	N MAX RPM	1500
SPEED @ RATED TORQUE	N RATED RPM	1200
* CONTINUOUS RATED TORQUE @ 1200 RPM	IN-LBS[Nm]	344.0[38.6]
* CONTINUOUS STALL TORQUE	IN-LBS[Nm]	400.0[44.9]
CONTINUOUS LINE CURRENT	AMPS	22.5
PEAK TORQUE	IN-LBS[Nm]	1200.0[134.8]
PEAK CURRENT	AMPS	67.5
MAX. THEORETICAL ACCEL.	RAD/SEC <sup>2</sup>	29,197
TORQUE SENSITIVITY	Kt[IN-LBS/AMP][Nm/AMP]	17.6[2.0]
BACK EMF (LINE TO LINE)	Vrms/Krpm	158.0
D.C. RESISTANCE (P-P)	OHMS	1.41
INDUCTANCE (P-P)	MILLIHENRIES	15.5
ROTOR INERTIA	Jm[IN-LBS-SEC <sup>2</sup> ][Kg-M <sup>2</sup> ]	.0411[.00464]
STATIC FRICTION	Tf[IN-LBS][Nm]	8.2[0.92]

\*25°C AMBIENT WITH A MAXIMUM CASE TEMPERATURE OF 100°C ON MOTOR. MOTOR MOUNTED ON A 14" X 14" X 3/4" ALUMINUM HEATSINK. THERMOSTAT IN STATOR WINDINGS WILL OPEN IF WINDING TEMPERATURE EXCEEDS 155°C. THIS ALLOWS FOR AN APPROXIMATE +10% HEADROOM IN THE CONTINUOUS TORQUE RATING BEFORE THERMOSTAT OPENS.

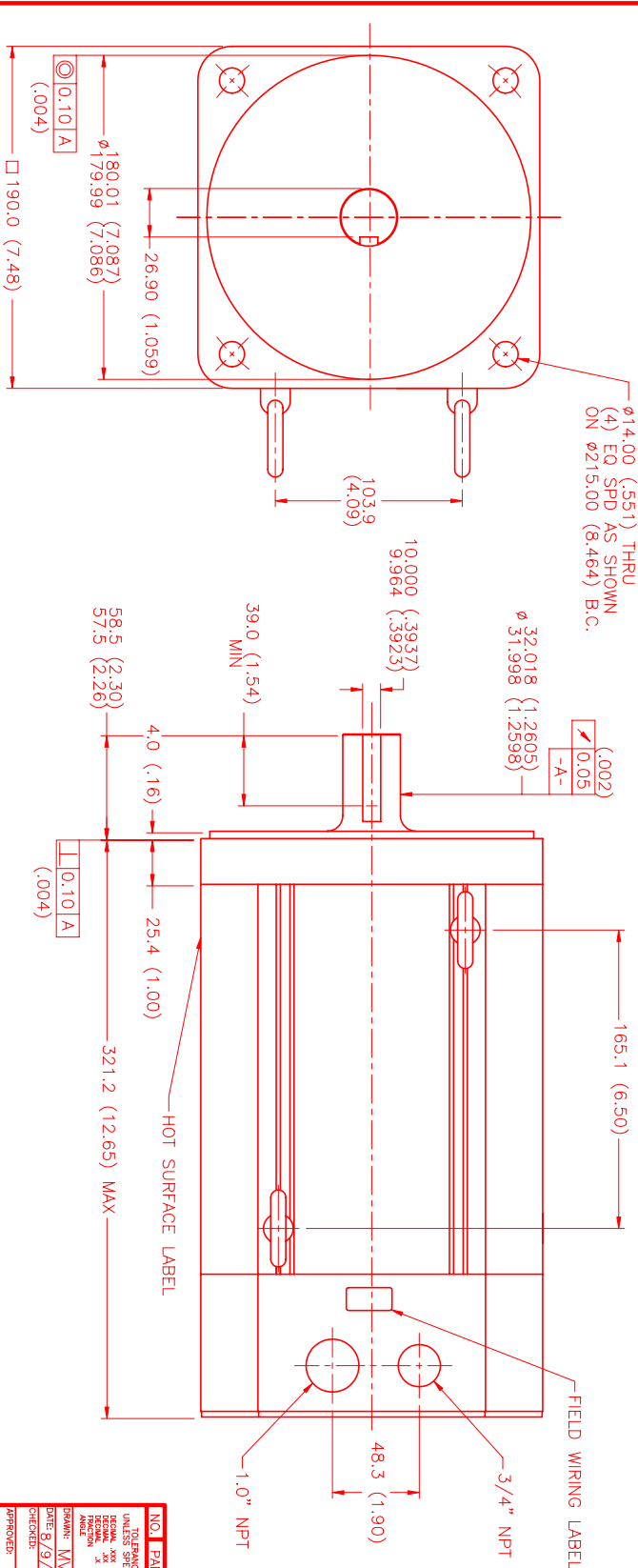
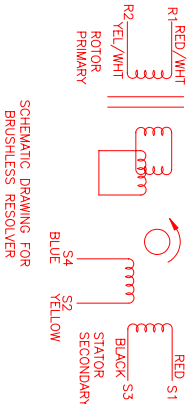
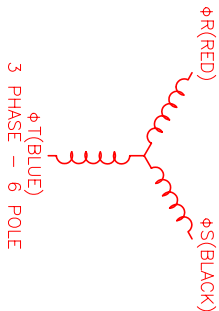
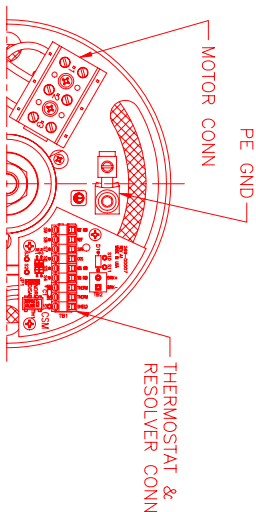
#### MECHANICAL NOTES:

- AXIAL LOAD: 100 LBS MAX
- RADIAL LOAD: 250 LBS MAX @ 1" FROM FACE
- MOTOR SEALED TO IP65.
- MOTOR WEIGHT: 68 LBS. [ 30.8 kg]
- MOTOR FINISH: BLACK EPOXY
- MILLIMETERS (INCHES)

### CONNECTION CHART

MOTOR WIRE LEADS	WIRE FUNCTION	WIRE COLOR
1	ΦS	BLACK
2	ΦT	BLUE
3	PE GND	-

RES/THERM WIRE LEADS	WIRE FUNCTION	WIRE COLOR
S9	REF GND	YEL/WHI
S8	REF	RED/WHI
S7	SIN	YELLOW
S6	COS	RED
S5	COS GND	BLACK
S4	SIN GND	BLUE
S3	THERM	BLACK
S2	THERM	BLACK
S1	RES SHLD	GRN/YEL



NO.	PART NUMBER	DESCRIPTION	QTY.
1	MTS 1901BTG7G3N	MTS Automation Division	1

REV.	DESCRIPTION	DATE	APP.
PRELIMINARY		8/12/99	MVS

NO.	PART NUMBER	DESCRIPTION	QTY.
1	MTS 1901BTG7G3N	MTS Automation Division	1