

MOTOR DATA @ 230 VAC (TRAP)

MOTOR PARAMETERS	UNITS	VALUE
HORSEPOWER	HP	6.5
KILOWATTS	KW	4.9
MAX. OPERATING SPEED	N. MAX RPM	1500
SPEED @ RATED TORQUE	N RATED RPM	1200
* CONTINUOUS RATED TORQUE @ 1200 RPM	IN-LBS [Nm]	344.0 [38.6]
* CONTINUOUS STALL TORQUE	IN-LBS [Nm]	400.0 [44.9]
CONTINUOUS LINE CURRENT	AMPS	22.5
PEAK TORQUE	IN-LBS [Nm]	1200.0 [134.8]
PEAK CURRENT	AMPS	67.5
MAX. THEORETICAL ACCEL.	RAD/SEC ²	29,197
TORQUE SENSITIVITY	Kt [IN-LBS/AMP] [Nm/AMP]	17.6 [2.0]
BACK EMF (LINE TO LINE)	Vrms/Krpm	158.0
D.C. RESISTANCE (P-P)	OHMS	1.41
INDUCTANCE (P-P)	MILLIHENRIES	15.5
ROTOR INERTIA	Jm [IN-LBS-SEC ²] [Kg-M ²]	.0411 [0.00464]
STATIC FRICTION	Tf [IN-LBS] [Nm]	8.2 [.92]

*25°C AMBIENT WITH A MAXIMUM CASE TEMPERATURE OF 100°C ON MOTOR. MOTOR MOUNTED ON A 14" X 14" X 3/4" ALUMINUM HEATSINK. THERMOSTAT IN STATOR WINDINGS WILL OPEN IF WINDING TEMPERATURE EXCEEDS 155°C. THIS ALLOWS FOR AN APPROXIMATE +10% HEADROOM IN THE CONTINUOUS TORQUE RATING BEFORE THERMOSTAT OPENS.

- MECHANICAL NOTES:**
- AXIAL LOAD: 100 LBS MAX
 - RADIAL LOAD: 250 LBS MAX @ 1" FROM FACE
 - MOTOR SEALED TO IP65
 - MOTOR WEIGHT: 67 LBS [30.4 kg]
 - MOTOR FINISH: BLACK EPOXY
 - MILLIMETERS (INCHES)

PT02E-14-18P(027)
MATING CONNECTOR:
PT06E-14-18S(476)

ENCODER: (290-00052)
OH48-2000P6-L6-5V

CONNECTION CHART

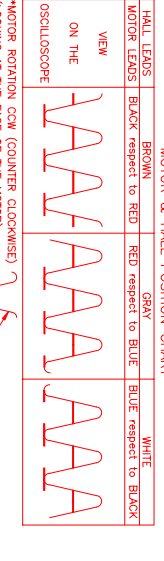
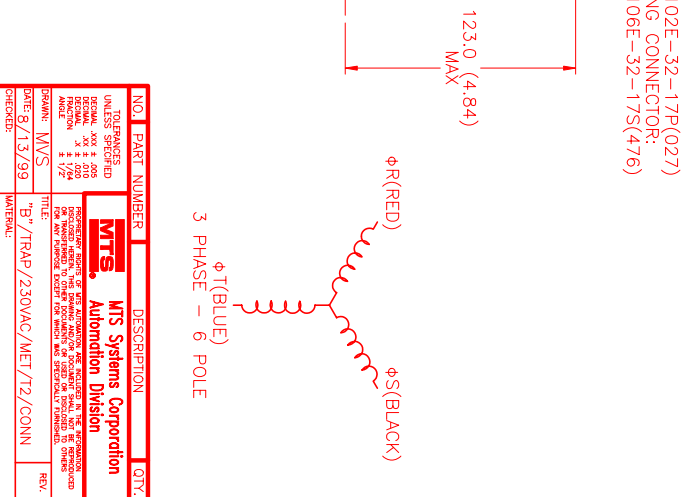
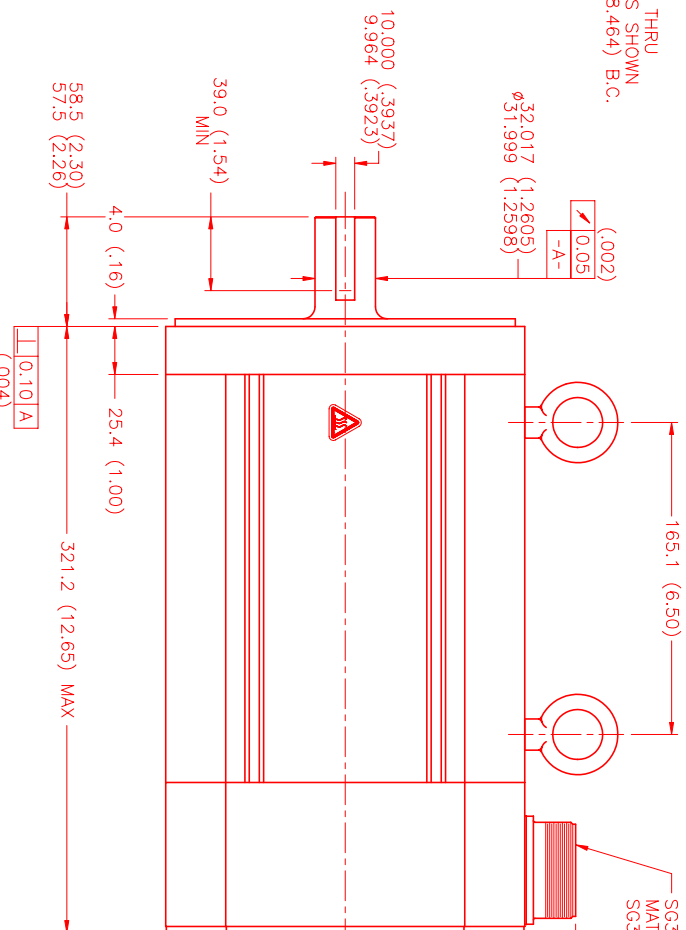
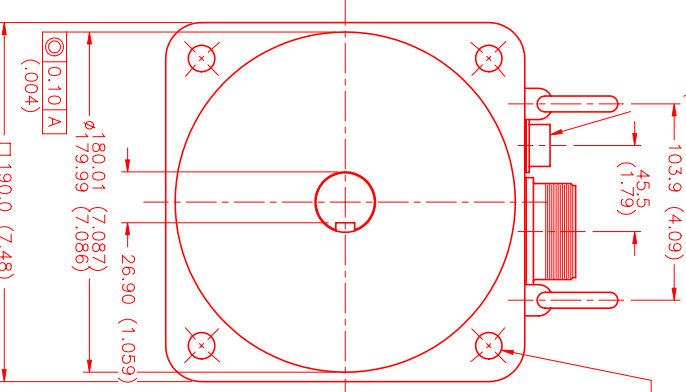
MOTOR CONNECTOR:
SG3102E-32-17P(027)
(270-00066)

MOTOR WIRE LEADS	WIRE FUNCTION	WIRE COLOR
A	ΦR	RED
B	ΦS	BLACK
C	ΦT	BLUE
D	PE GND	GRN/YEL

ENCODER/THERM CONNECTOR:

PT02E-14-18P(027)
(270-00024)

ENC/THERM WIRE LEADS	WIRE FUNCTION	WIRE COLOR
T	GROUND	BLACK
K	+5VDC	RED
B	CH A	BLUE
N	CH B	GREEN
P	CH B	GRN/BLK
M	CH Z	YELLOW
U	CH Z	YEL/BLK
E	CH U	BROWN
R	CH U	BRN/BLK
F	CH V	GRAY
S	CH V	GRAY/BLK
G	CH W	WHITE
H	CH W	WHT/BLK
D	GND/CABLE SHLD	SHLD
A	THERM	BLACK
L	THERM	BLACK
J	GND	GRN/YEL



MOTOR & HALL POSITION CHART

NO.	PART NUMBER	DESCRIPTION	QTY.
1	SG3102E-32-17P(027)	MOTOR	1
2	PT06E-14-18S(476)	MATING CONNECTOR	1
3	PT02E-14-18P(027)	ENCODER/THERM CONNECTOR	1

DATE: 8/13/99
DRAWN: MVS
CHECKED: MVS
APPROVED: MVS

REV.	DESCRIPTION	DATE	APPD.
1	PRELIMINARY	8/14/99	MVS