

MOTOR DATA @ 460 VAC (SINE)

MOTOR PARAMETERS	UNITS	VALUE
HORSEPOWER	HP RATED	6.5
	KW RATED	5.0
MAX. OPERATING SPEED	N. MAX RPM	1500
SPEED @ RATED TORQUE	N RATED RPM	1200
* CONTINUOUS RATED TORQUE @ 1200 RPM	IN-LBS[Nm]	344.0 [38.6]
* CONTINUOUS STALL TORQUE	IN-LBS[Nm]	400.0 [44.9]
CONTINUOUS LINE CURRENT	AMPS/(RMS/Φ)	7.9
PEAK TORQUE	TPK	1200.0 [134.8]
PEAK CURRENT	AMPS/(RMS/Φ)	23.8
MAX. THEORETICAL ACCEL.	RAD/SEC ²	29,197
TORQUE SENSITIVITY	Kt [IN-LBS/AMP(RMS)/Φ] / [Nm/AMP(RMS/Φ)]	49.5 [5.59]
BACK EMF (LINE TO LINE)	±10% Vrms/Krpm	316.0
D.C. RESISTANCE (P-P)	±10% OHMS	4.6
INDUCTANCE (P-P)	±10% MILLIHENRIES	60.2
ROTOR INERTIA	Jm [IN-LBS-SEC ²] / Kg-M ²	.0411 [0.00464]
STATIC FRICTION	Tf	8.2 [.92]

*25°C AMBIENT WITH A MAXIMUM CASE TEMPERATURE OF 100°C ON MOTOR. MOTOR MOUNTED ON A 14" X 14" X 3/4" ALUMINUM HEATSINK. THERMOSTAT IN STATOR WINDINGS WILL OPEN IF WINDING TEMPERATURE EXCEEDS 155°C. THIS ALLOWS FOR AN APPROXIMATE +10% HEADROOM IN THE CONTINUOUS TORQUE RATING BEFORE THERMOSTAT OPENS.

MECHANICAL NOTES:

- AXIAL LOAD: 100 LBS MAX
- RADIAL LOAD: 250 LBS MAX @ 1" FROM FACE
- MOTOR SEALED TO IP65
- MOTOR WEIGHT: 67 LBS [30.4 kg]
- MOTOR FINISH: BLACK EPOXY
- MILLIMETERS (INCHES)

PT02E-14-18P(027)
MATING CONNECTOR:
PT06E-14-18S(476)

ENCODER: (290-00073)
OH48-2048P6-L6-5V

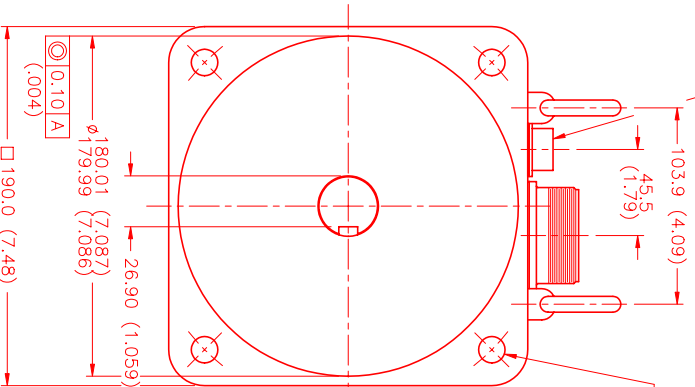
CONNECTION CHART

ENCODER/THERM CONNECTOR:
PT02E-14-18P(027)
(270-00024)

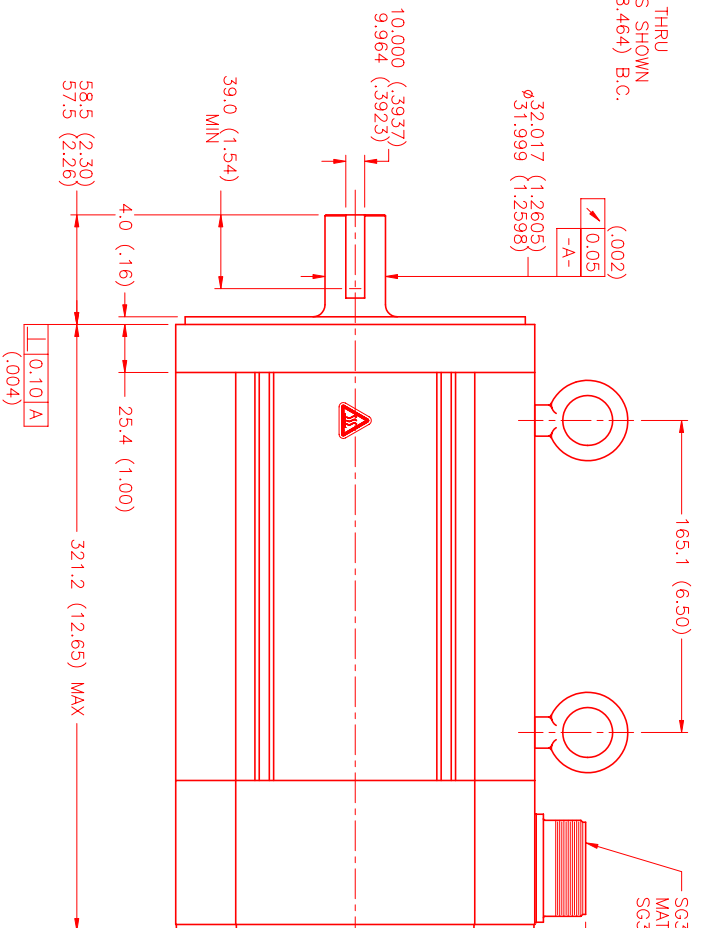
ENC/THERM	WIRE	WIRE LEADS
PIN	FUNCTION	WIRE COLOR
T	GROUND	BLACK
K	+5VDC	RED
B	CH A	BLUE
C	CH A	BLUE/BLK
N	CH B	GREEN
P	CH B	GRN/BLK
M	CH Z	YELLOW
U	CH Z	YEL/BLK
E	CH U	BROWN
R	CH U	BRN/BLK
F	CH V	GRAY
S	CH V	GRAY/BLK
G	CH W	WHITE
H	CH W	WHT/BLK
D	GND/CABLE	SHLD
A	THERM	BLACK
L	THERM	BLACK
J	GND	GRN/YEL

MOTOR CONNECTOR:
SG3102E-32-17P(027)
(270-00066)

MOTOR	WIRE	WIRE LEADS
PIN	FUNCTION	WIRE COLOR
A	ΦR	RED
B	ΦS	BLACK
C	ΦT	BLUE
D	PE GND	GRN/YEL



Ø14.00 (.551) THRU
(4) EQ SPD AS SHOWN
ON Ø215.00 (8.464) B.C.



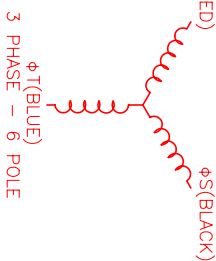
SG3102E-32-17P(027)
MATING CONNECTOR:
SG3106E-32-17S(476)

*MOTOR ROTATION COW (COUNTER CLOCKWISE)
(LOOKING AT THE FACE OF THE MOTOR)



MOTOR & HALL POSITION CHART

HALL LEADS	BROWN	GRAY	WHITE
MOTOR LEADS	BLACK respect to RED	RED respect to BLUE	BLUE respect to BLACK
VIEW ON THE OSCILLOSCOPE	AAAA	AAAA	AAAA



REV.	DESCRIPTION	DATE	APPD.
	PRELIMINARY	5/26/00	MVS

NO.	PART NUMBER	DESCRIPTION	QTY.
UNLESS SPECIFIED			
DESIGN	MTS	Automation Division	
DATE	5/26/00		
DESIGNED BY	MVS		
CHECKED BY			
APPROVED BY			
DRAWING NUMBER	MPM1901DSU74Y1N	SCALE	1/2:1