

MOTOR DATA @ 460 VAC (SINE)

MOTOR PARAMETERS	UNITS	VALUE
HORSEPOWER	HP RATED	14.4
KILOWATTS	KW RATED	10.8
MAX. OPERATING SPEED	N. MAX RPM	1500
SPEED @ RATED TORQUE	N RATED RPM	1200
* CONTINUOUS RATED TORQUE @ 1200 RPM	IN-LBS[Nm]	757.0 [85.0]
* CONTINUOUS STALL TORQUE	IN-LBS[Nm]	880.0 [98.8]
CONTINUOUS LINE CURRENT	AMPS[RMS/φ]	17.7
PEAK TORQUE	TPK	2640.0 [296.0]
PEAK CURRENT	AMPS[RMS/φ]	53.0
MAX. THEORETICAL ACCEL.	RAD/SEC ²	25.631
TORQUE SENSITIVITY	Kt [N-LBS/AMP/RMS/φ][Nm/AMP/RMS/φ]	49.5 [5.6]
BACK EMF (LINE TO LINE)	Vrms/Krpm	316.0
D.C. RESISTANCE (P-P)	OHMS	1.09
INDUCTANCE (P-P)	MILLIHENRIES	17.2
ROTOR INERTIA	Jm [IN-LBS-SEC ²][Kg-M ²]	.103 [0.116]
STATIC FRICTION	Tf [IN-LBS][Nm]	11.4 [1.3]

*25°C AMBIENT WITH A MAXIMUM CASE TEMPERATURE OF 100°C ON MOTOR. MOTOR MOUNTED ON A 14" X 14" X 3/4" ALUMINUM HEATSINK. THERMOSTAT IN STATOR WINDINGS WILL OPEN IF WINDING TEMPERATURE EXCEEDS 155°C. THIS ALLOWS FOR AN APPROXIMATE +10% HEADROOM IN THE CONTINUOUS TORQUE RATING BEFORE THERMOSTAT OPENS.

- MECHANICAL NOTES:**
- AXIAL LOAD: 100 LBS MAX
 - RADIAL LOAD: 250 LBS MAX @ 1" FROM FACE
 - MOTOR SEALED TO IP65
 - MOTOR WEIGHT: 129 LBS [58.5 kg]
 - MOTOR FINISH: BLACK EPOXY
 - MILLIMETERS (INCHES)

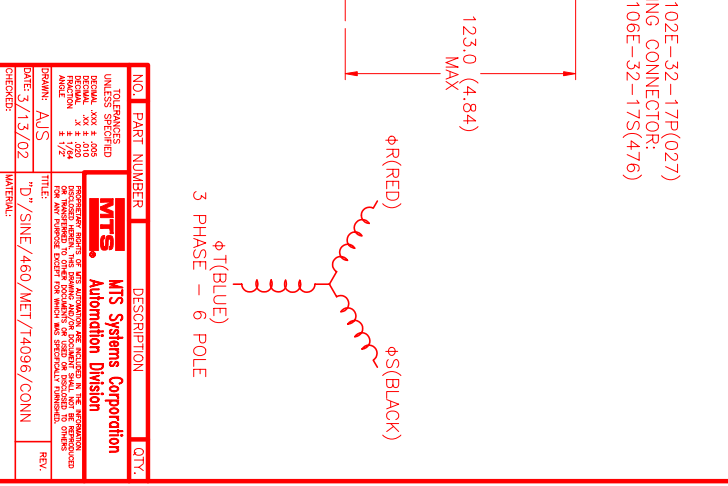
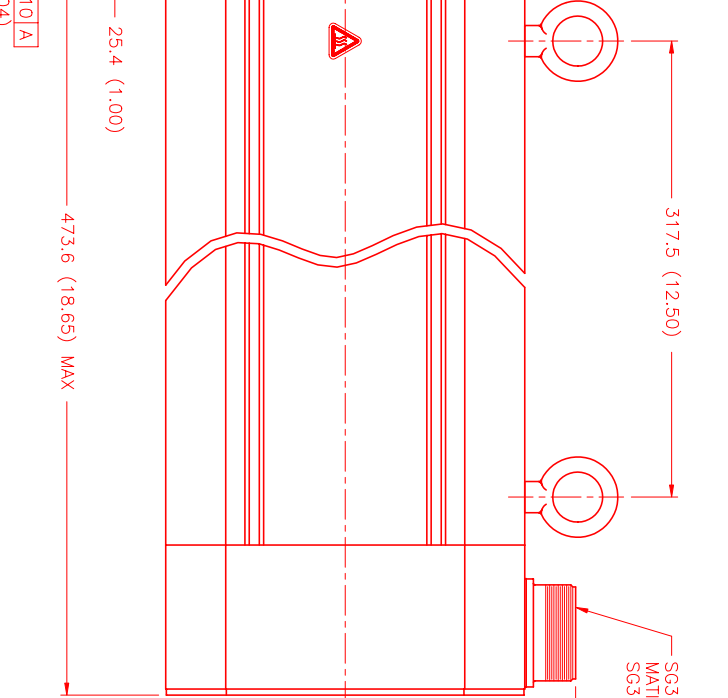
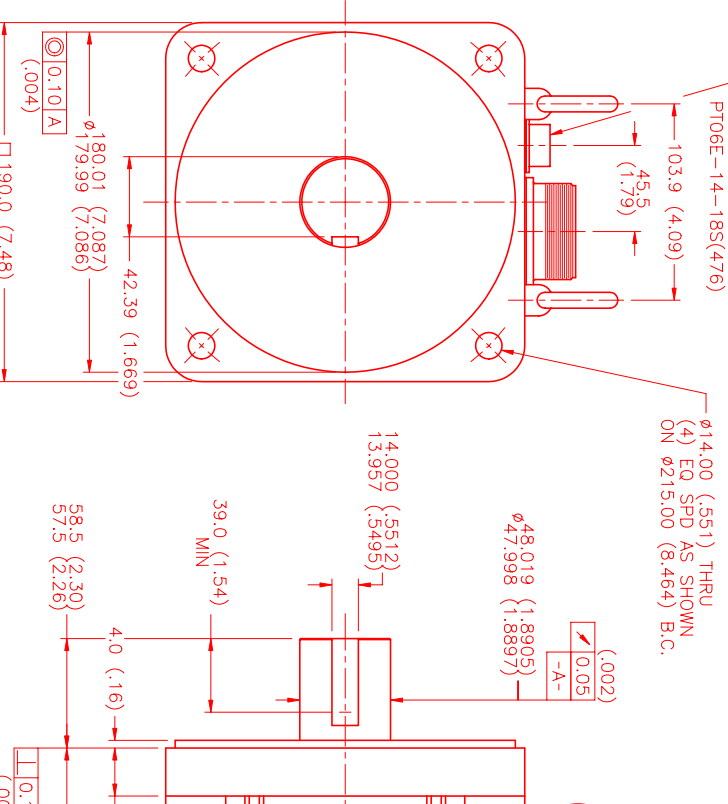
ENCODER: (290-00107)
OH48-4096P6-L6-5V

CONNECTION CHART
MOTOR CONNECTOR:
SG3102E-32-17P(027)
(270-00066)

MOTOR WIRE LEADS	WIRE FUNCTION	WIRE COLOR
A	φR	BLACK
B	φS	RED
C	φT	BLUE
D	PE GND	GRN/YEL

ENCODER/THERM CONNECTOR:
PT02E-14-18P(027)
(270-00024)

ENC/THERM WIRE LEADS	WIRE FUNCTION	WIRE COLOR
T	GROUND	BLACK
K	+5VDC	RED
B	CH A	BLUE
N	CH B	GREEN
P	CH B'	GRN/BLK
M	CH Z	YELLOW
U	CH Z'	YEL/BLK
E	CH U	BROWN
R	CH U'	BRN/BLK
F	CH V	GRAY
S	CH V'	GRAY/BLK
G	CH W	WHITE
H	CH W'	WHT/BLK
D	GND/CABLE SHLD	BLK
A	THERM	BLACK
L	THERM	BLACK
J	GND	GRN/YEL



NO.	PART NUMBER	DESCRIPTION	QTY.
1	SG3102E-32-17P(027)	MOTOR	1
2	PT02E-14-18P(027)	ENCODER	1
3	OH48-4096P6-L6-5V	ENCODER	1

UNLESS SPECIFIED	REVISIONS
<p>DESIGN: MPM # 205</p> <p>DATE: 3/13/02</p> <p>SCALE: 1/2"</p> <p>APPROVED: [Signature]</p>	<p>DATE: 4/4/02</p> <p>APPD: [Signature]</p>

NO.	REVISION	DESCRIPTION	DATE	APPD.
1	1	INITIAL DESIGN	3/13/02	[Signature]
2	2	REVISED TO ADD ENCODER	4/4/02	[Signature]

NO.	REVISION	DESCRIPTION	DATE	APPD.
3	3	REVISED TO ADD MOTOR	4/4/02	[Signature]

NO.	REVISION	DESCRIPTION	DATE	APPD.
4	4	REVISED TO ADD MOTOR	4/4/02	[Signature]

NO.	REVISION	DESCRIPTION	DATE	APPD.
5	5	REVISED TO ADD MOTOR	4/4/02	[Signature]

NO.	REVISION	DESCRIPTION	DATE	APPD.
6	6	REVISED TO ADD MOTOR	4/4/02	[Signature]

NO.	REVISION	DESCRIPTION	DATE	APPD.
7	7	REVISED TO ADD MOTOR	4/4/02	[Signature]

NO.	REVISION	DESCRIPTION	DATE	APPD.
8	8	REVISED TO ADD MOTOR	4/4/02	[Signature]

NO.	REVISION	DESCRIPTION	DATE	APPD.
9	9	REVISED TO ADD MOTOR	4/4/02	[Signature]

NO.	REVISION	DESCRIPTION	DATE	APPD.
10	10	REVISED TO ADD MOTOR	4/4/02	[Signature]

NO.	REVISION	DESCRIPTION	DATE	APPD.
11	11	REVISED TO ADD MOTOR	4/4/02	[Signature]

NO.	REVISION	DESCRIPTION	DATE	APPD.
12	12	REVISED TO ADD MOTOR	4/4/02	[Signature]

NO.	REVISION	DESCRIPTION	DATE	APPD.
13	13	REVISED TO ADD MOTOR	4/4/02	[Signature]