

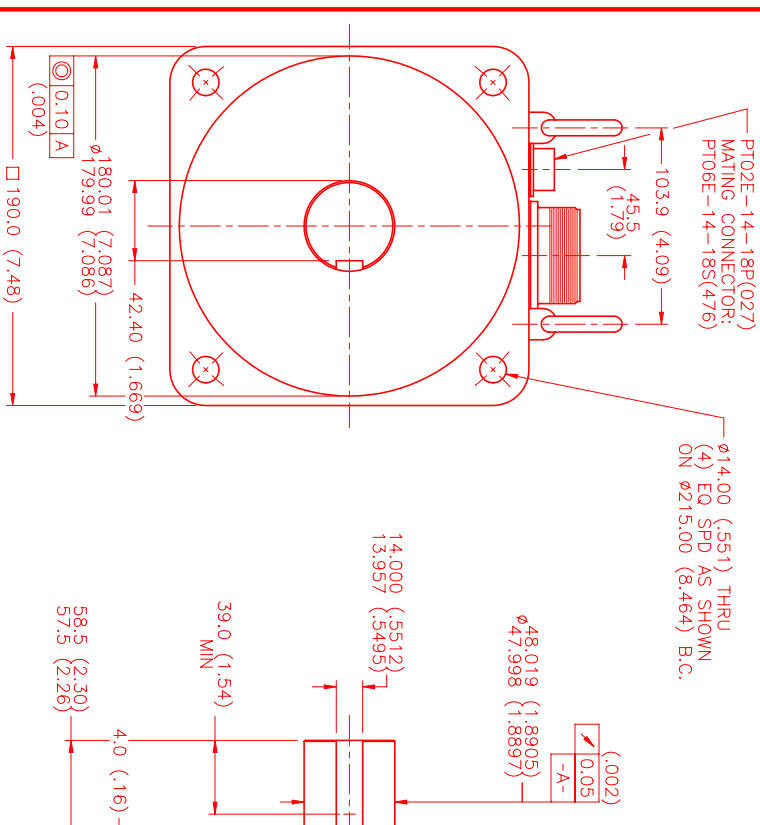
MOTOR DATA @ 460 VAC (TRAP)

MOTOR PARAMETERS	UNITS	VALUE
HORSEPOWER	HP RATED	18.0
KILOWATTS	KW RATED	13.4
MAX. OPERATING SPEED	N. MAX RPM	1500
SPEED @ RATED TORQUE	N RATED RPM	1200
* CONTINUOUS RATED TORQUE @ 1200 RPM	IN-LBS [Nm]	939.0 [105.0]
* CONTINUOUS STALL TORQUE	IN-LBS [Nm]	1092.0 [123.0]
CONTINUOUS LINE CURRENT	AMPS	31.0
PEAK TORQUE	IN-LBS [Nm]	3276.0 [370.0]
PEAK CURRENT	AMPS	93.0
MAX. THEORETICAL ACCEL.	RAD/SEC ²	24.632
TORQUE SENSITIVITY	Kt [IN-LBS/AMP] [Nm/AMP]	35.0 [4.0]
BACK EMF (LINE TO LINE)	Vrms/Krpm	316.0
D.C. RESISTANCE (P-P)	OHMS	.72
INDUCTANCE (P-P)	MILLIHENRIES	13.4
ROTOR INERTIA	Jm [IN-LBS-SEC ²] [Kg-M ²]	.133 [0.0150]
STATIC FRICTION	Tf [IN-LBS] [Nm]	13.0 [1.5]

*25°C AMBIENT WITH A MAXIMUM CASE TEMPERATURE OF 100°C ON MOTOR. MOTOR MOUNTED ON A 14" X 14" X 3/4" ALUMINUM HEATSINK. THERMOSTAT IN STATOR WINDINGS WILL OPEN IF WINDING TEMPERATURE EXCEEDS 155°C. THIS ALLOWS FOR AN APPROXIMATE +10% HEADROOM IN THE CONTINUOUS TORQUE RATING BEFORE THERMOSTAT OPENS.

MECHANICAL NOTES:

- AXIAL LOAD: 100 LBS MAX
- RADIAL LOAD: 250 LBS MAX @ 1" FROM FACE
- MOTOR SEALED TO IP65.
- MOTOR WEIGHT: 160 LBS. [72.6 kg]
- MOTOR FINISH: BLACK EPOXY
- MILLIMETERS (INCHES)



CONNECTION CHART

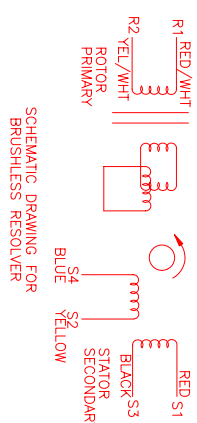
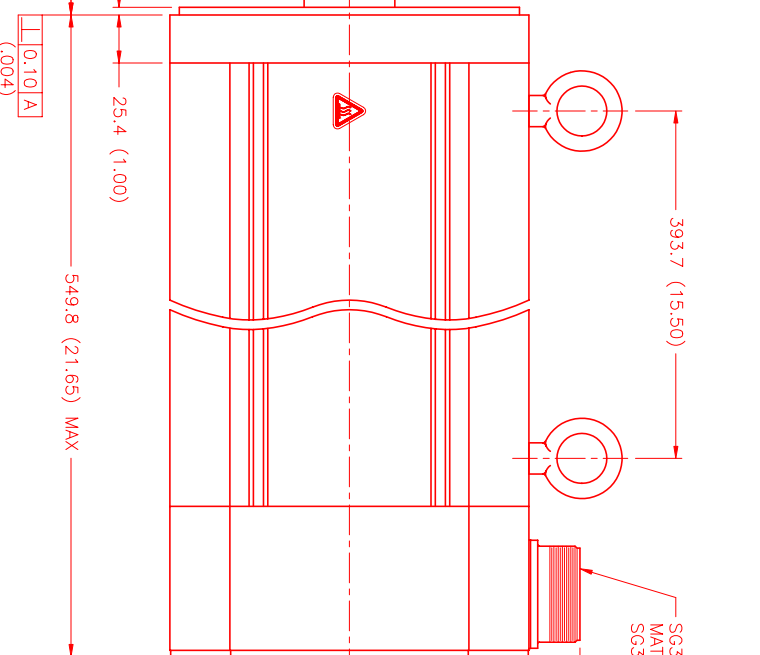
MOTOR CONNECTOR:
SG3102E-32-17P(027)
(270-00066)

MOTOR WIRE LEADS	WIRE	WIRE COLOR
A	φR	RED
B	φS	BLACK
C	φT	BLUE
D	PE GND	GRN/YEL

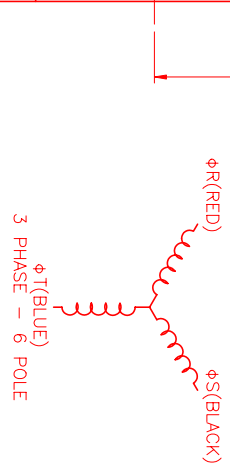
RESOLVER/THERM CONNECTOR:

PT02E-14-18P(027)
(270-00024)

RES/THERM WIRE LEADS	WIRE FUNCTION	WIRE COLOR
A	—	—
B	—	—
C	—	—
J	—	—
K	—	—
L	—	—
M	—	—
T	—	—



SCHEMATIC DRAWING FOR
BRUSHLESS RESOLVER



REV.	DESCRIPTION	DATE	APP'D.
PRELIMINARY		8/10/99	MVS

NO.	PART NUMBER	DESCRIPTION	QTY.
1	MTS	MTS Systems Corporation Automation Division	

DATE: 8/10/99
DRAWN: MVS
CHECKED:
APPROVED:

SCALE: 1/2=1