

MOTOR DATA @ 54 VAC (SINE)

MOTOR PARAMETERS	UNITS	VALUE
HORSEPOWER	HP RATED	.11
	KW RATED	.08
MAX. OPERATING SPEED	N. MAX RPM	4500
SPEED @ RATED TORQUE	RPM	3000
* CONTINUOUS RATED TORQUE @ 3000 RPM	N-LBS[Nm]	2.3[0.3]
* CONTINUOUS STALL TORQUE	N-LBS[Nm]	2.6[0.3]
CONTINUOUS LINE CURRENT	AMPS(RMS/φ)	1.8
PEAK TORQUE	Tpk	7.8[0.9]
PEAK CURRENT	AMPS(RMS/φ)	5.3
MAX. THEORETICAL ACCEL.	RAD/SEC ²	118,182
TORQUE SENSITIVITY	Kt [N-LBS/AMP(RMS/φ)] [Nm/AMP(RMS/φ)]	1.46[.16]
BACK EMF (LINE TO LINE)	±10% Vrms/Krpm	9.2
D.C. RESISTANCE (P-P)	±10% OHMS	6.9
INDUCTANCE (P-P)	±10% MILLIHENRIES	7.7
ROTOR INERTIA	Jm [N-LBS-SEC ²] [Kg-M ²]	0.000066[.0000075]
STATIC FRICTION	Tf [N-LBS][Nm]	.35[.040]

*25°C AMBIENT WITH A MAXIMUM CASE TEMPERATURE OF 100°C ON MOTOR. MOTOR MOUNTED ON A 10" X 10" X 1/4" ALUMINUM HEATSINK. THERMOSTAT IN STATOR WINDINGS WILL OPEN IF WINDING TEMPERATURE EXCEEDS 155°C. THIS ALLOWS FOR AN APPROXIMATE +10% HEADROOM IN THE CONTINUOUS TORQUE RATING BEFORE THERMOSTAT OPENS.

MECHANICAL NOTES:

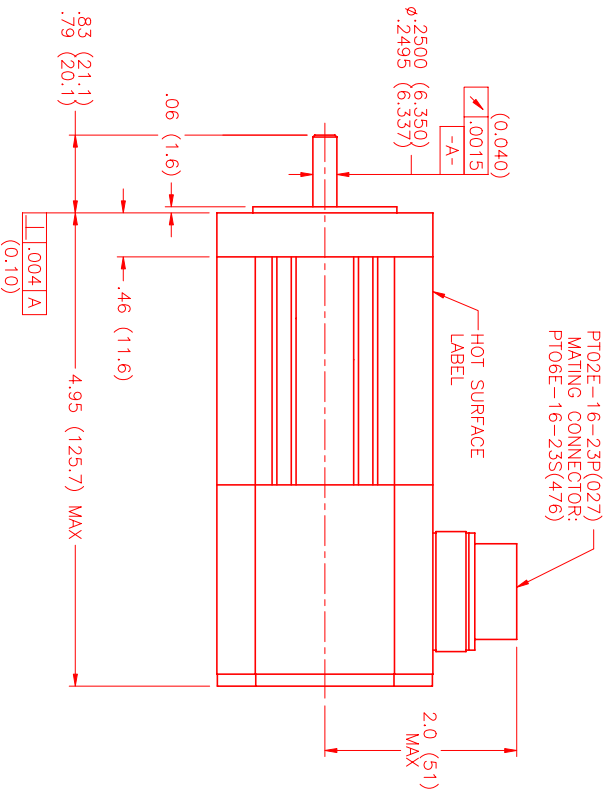
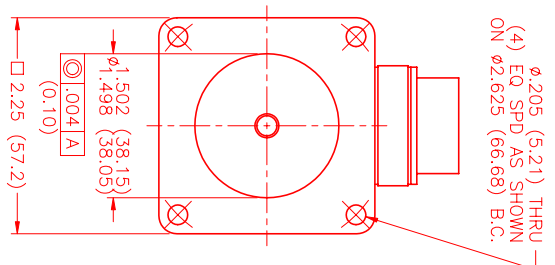
- AXIAL LOAD: 15 LBS MAX
- RADIAL LOAD: 20 LBS MAX @ 1" FROM FACE
- MOTOR SEALED TO IP65.
- MOTOR WEIGHT: 2.1 LBS. [1.0 kg]
- MOTOR FINISH: BLACK EPOXY
- MOTOR OUTPUT SHAFT: STAINLESS STEEL
- INCHES (MILLIMETERS)

ENCODER: (290-00065)
OH35-1000P4-L6-5V

CONNECTION CHART MOTOR/ENCODER/THERM CONNECTOR: PT02E-16-23P(027) (270-00219)

MOTOR WIRE LEADS	WIRE COLOR	ENC/THERM WIRE LEADS	WIRE COLOR
A	RED	T	GROUND
B	BLACK	E	+5VDC
C	BLUE	F	CH A
D	GRN/YEL	U	CH A
		G	CH B
		V	CH B
		H	CH Z
		W	CH Z
		J	CH U
		K	CH U
		X	CH V
		L	CH V
		Y	CH W
		M	CH W
		N	GND/CABLE SHLD
		S	THERM
		R	THERM
		P	THERM
		Z	THERM

PIN	WIRE FUNCTION	WIRE COLOR
A	φR	RED
B	φS	BLACK
C	φT	BLUE
D	PE GND	GRN/YEL

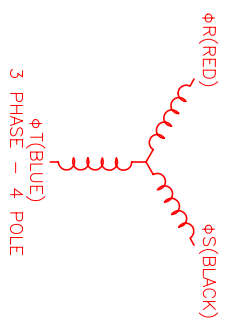


PT02E-16-23P(027)
MATING CONNECTOR:
PT06E-16-23S(476)

MOTOR & HALL POSITION CHART

HALL LEADS	BROWN	GRAY	WHITE
MOTOR LEADS	BLACK respect to RED	RED respect to BLUE	BLUE respect to BLACK
VIEW ON THE OSCILLOSCOPE	AAAF	AAA	AAA

MOTOR ROTATION CCW (COUNTER CLOCKWISE) (LOOKING AT THE FACE OF THE MOTOR)
WAVE REPRESENTING STATOR OUTPUT
WAVE REPRESENTING HALL SENSOR



NO. PART NUMBER	DESCRIPTION	QTY.
UNLESS SPECIFIED		
DESIGN: MWS # 205	DATE: 9/27/99	SCALE: 1:1
REVISIONS	DATE	APP.
PRELIMINARY	4/11/00	LIN

MTS
Automation Division

FORMING MPM661ASE6JM1N