

MOTOR DATA @ 110 VAC (TRAP)

MOTOR PARAMETERS	UNITS	VALUE
HORSEPOWER	HP RATED	.09
KILOWATTS	KW RATED	.07
MAX. OPERATING SPEED	N MAX RPM	3000
SPEED @ RATED TORQUE	N RATED RPM	2500
* CONTINUOUS RATED TORQUE @ 2500 RPM	IN-LBS[Nm]	2.31(.26)
* CONTINUOUS STALL TORQUE	IN-LBS[Nm]	2.6(.29)
CONTINUOUS LINE CURRENT	AMPS	1.53
PEAK TORQUE	IN-LBS[Nm]	7.8(0.9)
PEAK CURRENT	AMPS	5.0
MAX. THEORETICAL ACCEL.	RAD/SEC ²	118,182
TORQUE SENSITIVITY	Kt [IN-LBS/AMP] [Nm/AMP]	2.0(0.23)
BACK EMF (LINE TO LINE)	Vrms/Krpm	18.0
D.C. RESISTANCE (P-P)	OHMS	31.9
INDUCANCE (P-P)	MILLIHENRIES	29.4
ROTOR INERTIA	Jm [IN-LBS-SEC ²] [Kg-M ²]	.000066(.0000075)
STATIC FRICTION	Tf [IN-LBS] [Nm]	.35(.040)

*25°C AMBIENT WITH A MAXIMUM CASE TEMPERATURE OF 100°C ON MOTOR. MOTOR MOUNTED ON A 10" X 10" X 1/4" ALUMINUM HEATSINK. THERMOSTAT IN STATOR WINDINGS WILL OPEN IF WINDING TEMPERATURE EXCEEDS 155°C. THIS ALLOWS FOR AN APPROXIMATE +10% HEADROOM IN THE CONTINUOUS TORQUE RATING BEFORE THERMOSTAT OPENS.

MECHANICAL NOTES:

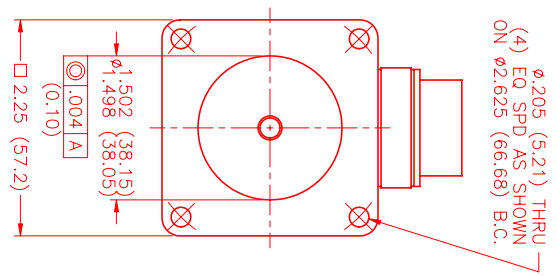
- AXIAL LOAD: 15 LBS MAX
- RADIAL LOAD: 20 LBS MAX @ 1" FROM FACE
- MOTOR SEALED TO IP65.
- MOTOR WEIGHT: 2.1 LBS. [1.0 kg]
- MOTOR FINISH: BLACK EPOXY
- MOTOR OUTPUT SHAFT: STAINLESS STEEL
- INCHES (MILLIMETERS)

ENCODER: (290-00056)
OH35-2000P4-L6-5V

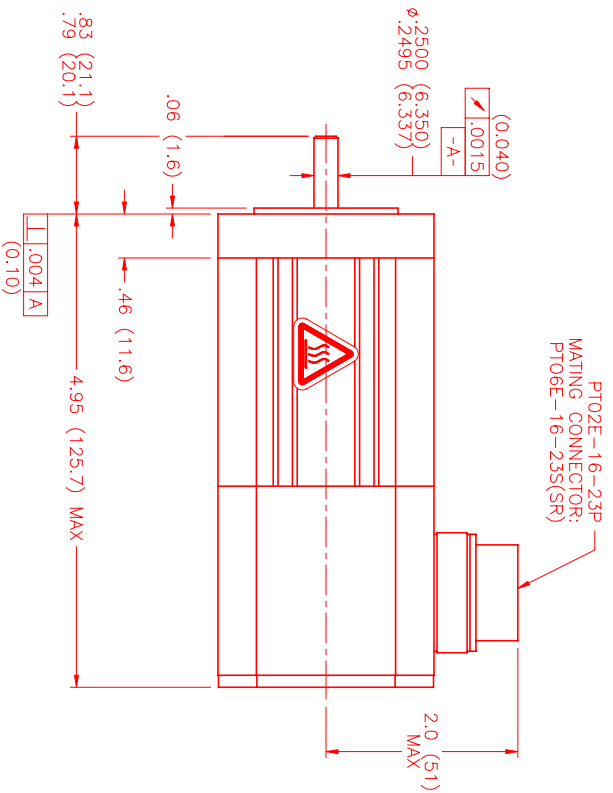
CONNECTION CHART
MOTOR/ENCODER/THERM CONNECTOR:
PT02E-16-23P
(270-00219)

MOTOR WIRE LEADS	WIRE FUNCTION	WIRE COLOR
A	ΦR	RED
B	ΦS	BLACK
C	ΦT	BLUE
D	PE_GND	GRN/YEL

ENC/THERM WIRE LEADS	WIRE FUNCTION	WIRE COLOR
T	GROUND	BLACK
E	+5VDC	RED
F	CH A	BLUE
U	CH A	BLUE/BLK
G	CH B	GREEN
V	CH B	GREEN/BLK
H	CH Z	YELLOW
W	CH Z	YEL/BLK
J	CH U	BROWN
K	CH U	BROWN/BLK
X	CH V	GRAY
L	CH V	GRAY/BLK
Y	CH W	WHITE
M	CH W	WHITE/BLK
N	GND/CABLE	SHIELD
S	THERM	BLACK
R	THERM	BLACK
P	-	-
Z	-	-



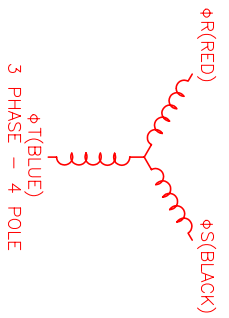
Φ.205 (5.21) THRU EQ SPD AS SHOWN ON Φ2.625 (66.68) B.C.



PT02E-16-23P MATING CONNECTOR: PT06E-16-23S(SR)

MOTOR & HALL POSITION CHART

VIEW	HALL LEADS	BROWN	GRAY	WHITE
ON THE OSCILLOSCOPE	BLACK respect to RED	RED respect to BLUE	BLUE respect to BLACK	
MOTOR ROTATION CCW (COUNTER CLOCKWISE) (LOOKING AT THE FACE OF THE MOTOR)	WAVE REPRESENTING STATOR OUTPUT	WAVE REPRESENTING HALL SENSOR		



3 PHASE - 4 POLE

NO. PART NUMBER	DESCRIPTION	QTY.								
UNLESS SPECIFIED										
DESIGNED BY: MVS	DATE: 11/10/98	CHECKED BY: MVS								
APPROVED BY: MVS	TITLE: "B"/TRAP/110/ENG/T2/CONN	SCALE: 1:1								
<p>MVS MVS Systems Corporation Automation Division</p>										
<p>REVISIONS</p> <table border="1"> <thead> <tr> <th>REV.</th> <th>DESCRIPTION</th> <th>DATE</th> <th>APP.</th> </tr> </thead> <tbody> <tr> <td>PRELIMINARY</td> <td></td> <td>4/11/00</td> <td>LIN</td> </tr> </tbody> </table>			REV.	DESCRIPTION	DATE	APP.	PRELIMINARY		4/11/00	LIN
REV.	DESCRIPTION	DATE	APP.							
PRELIMINARY		4/11/00	LIN							