

MOTOR DATA @ 110 VAC (TRAP)

MOTOR PARAMETERS	UNITS	VALUE
HORSEPOWER	HP RATED	.09
KILOWATTS	KW RATED	.07
MAX. OPERATING SPEED	N MAX RPM	3000
SPEED @ RATED TORQUE	N RATED RPM	2500
* CONTINUOUS RATED TORQUE @ 2500 RPM	IN-LBS[Nm]	2.3(.26)
* CONTINUOUS STALL TORQUE	IN-LBS[Nm]	2.6(.29)
CONTINUOUS LINE CURRENT	AMPS	1.53
PEAK TORQUE	IN-LBS[Nm]	7.8(0.9)
PEAK CURRENT	AMPS	5.0
MAX. THEORETICAL ACCEL.	RAD/SEC ²	118(.182)
TORQUE SENSITIVITY	Kt IN-LBS/AMP[Nm/AMP]	2.0(0.23)
BACK EMF (LINE TO LINE)	Vrms/krpm	18.0
D.C. RESISTANCE (P-P)	OHMS	31.9
INDUCTANCE (P-P)	MILLIHENRIES	29.4
ROTOR INERTIA	Jm IN-LBS-SEC ² [Kg-M ²]	.0000066(0.0000075)
STATIC FRICTION	Tf IN-LBS[Nm]	.35(.040)

*25°C AMBIENT WITH A MAXIMUM CASE TEMPERATURE OF 100°C ON MOTOR. MOTOR MOUNTED ON A 10" X 10" X 1/4" ALUMINUM HEATSINK. THERMOSTAT IN STATOR WINDINGS WILL OPEN IF WINDING TEMPERATURE EXCEEDS 155°C. THIS ALLOWS FOR AN APPROXIMATE +10% HEADROOM IN THE CONTINUOUS TORQUE RATING BEFORE THERMOSTAT OPENS.

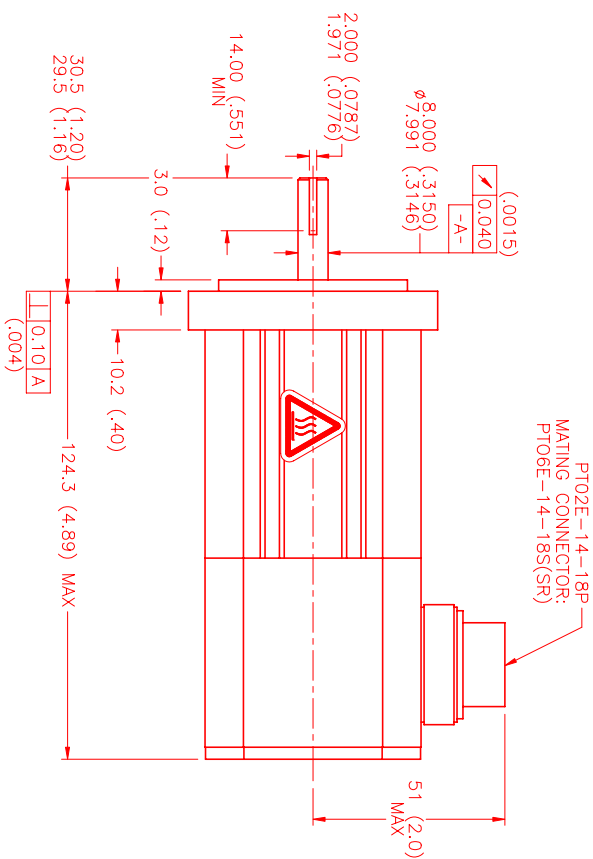
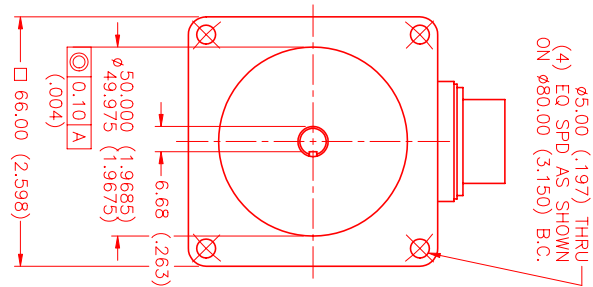
MECHANICAL NOTES:

1. AXIAL LOAD: 15 LBS MAX
2. RADIAL LOAD: 20 LBS MAX @1" FROM FACE
3. MOTOR SEALED TO IP65.
4. MOTOR WEIGHT: 2.3 LBS. [1.0 kg]
5. MOTOR FINISH: BLACK EPOXY
6. MOTOR OUTPUT SHAFT: STAINLESS STEEL
7. INCHES (MILLIMETERS)

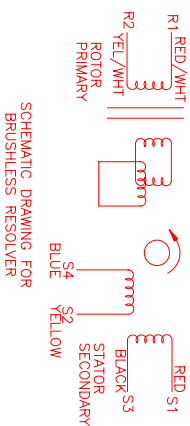
CONNECTION CHART

MOTOR/THERM/RESOLVER CONNECTOR:
PT02E-14-18P
(270-00024)

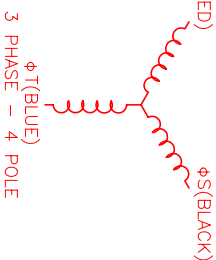
MTR/THERM/RES	WIRE LEADS	WIRE FUNCTION	WIRE COLOR
A	φR	RED	RED
B	φS	BLACK	BLACK
C	φT	BLUE	BLUE
D	PE GND	GRN/YEL	GRN/YEL
U	THERM	BLACK	BLACK
N	THERM	BLACK	BLACK
H	SIN	YELLOW	YELLOW
G	COS GND	BLACK	BLACK
S	COS	RED	RED
F	SIN GND	BLUE	BLUE
R	REF GND	YEL/WHI	YEL/WHI
E	REF	RED/WHI	RED/WHI
J	RES SHLD	GRN/YEL	GRN/YEL
K	-	-	-
L	-	-	-
M	-	-	-
P	-	-	-
T	-	-	-



PT02E-14-18P
MATING CONNECTOR:
PT06E-14-18S(SR)



SCHEMATIC DRAWING FOR
BRUSHLESS RESOLVER



REV#	DESCRIPTION	DATE	APPD.
1	PRELIMINARY	4/11/00	LIN

NO.	PART NUMBER	DESCRIPTION	QTY.
1	PT02E-14-18P	MOTOR/THERM/RES/CONN	1
MTS MTS Systems Corporation Automation Division DATE: 11/10/98 DRAWN: MVS CHECKED: MVS APPROVED: MVS MATERIAL: "B" /TRAP /110/MET/RES/CONN DRAWING: MPM661BTF7G1N SCALE: 1:1			