

MOTOR DATA @ 110 VAC (TRAP)

MOTOR PARAMETERS	UNITS	VALUE
HORSEPOWER	HP RATED	.21
KILOWATTS	KW RATED	.16
MAX. OPERATING SPEED	N. MAX RPM	5000
SPEED @ RATED TORQUE	N RATED RPM	4000
* CONTINUOUS RATED TORQUE @ 4000 RPM	IN-LBS[Nm]	3.4[.38]
* CONTINUOUS STALL TORQUE	IN-LBS[Nm]	5.0[.56]
CONTINUOUS LINE CURRENT	AMPS	2.4
PEAK TORQUE	IN-LBS[Nm]	15.1[1.7]
PEAK CURRENT	AMPS	7.2
MAX. THEORETICAL ACCEL.	RAD/SEC ²	123,770
TORQUE SENSITIVITY	Kt IN-LBS/AMPI Nm/AMP	2.0[.23]
BACK EMF (LINE TO LINE)	Vrms/Krpm	18.2
D.C. RESISTANCE (P-P)	OHMS	8.4
INDUCTANCE (P-P)	MILLIHENRIES	11.6
ROTOR INERTIA W/ BRAKE	Jm IN-LBS-SEC ² Kg-M ²	0.00122[.0000137]
STATIC FRICTION	Tf IN-LBS[Nm]	.5[.06]

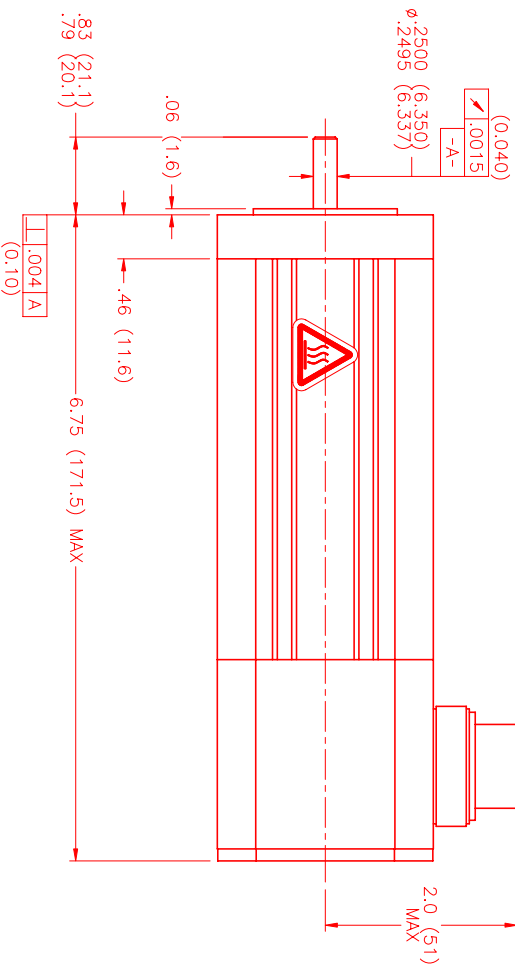
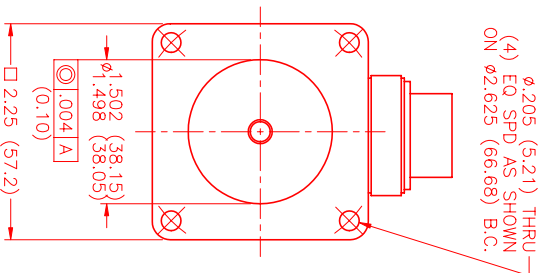
*25°C AMBIENT WITH A MAXIMUM CASE TEMPERATURE OF 100°C ON MOTOR. MOTOR MOUNTED ON A 10" X 10" X 1/4" ALUMINUM HEATSINK. THERMOSTAT IN STATOR WINDINGS WILL OPEN IF WINDING TEMPERATURE EXCEEDS 155°C. THIS ALLOWS FOR AN APPROXIMATE +10% HEADROOM IN THE CONTINUOUS TORQUE RATING BEFORE THERMOSTAT OPENS.

MECHANICAL NOTES:

1. AXIAL LOAD: 15 LBS MAX
2. RADIAL LOAD: 20 LBS MAX @ 1" FROM FACE
3. MOTOR SEALED TO IP65.
4. MOTOR WEIGHT: 3.5 LBS [1.6 Kg]
5. MOTOR FINISH: BLACK EPOXY
6. MOTOR OUTPUT SHAFT: STAINLESS STEEL
7. INCHES (MILLIMETERS)

FAILSAFE BRAKE:

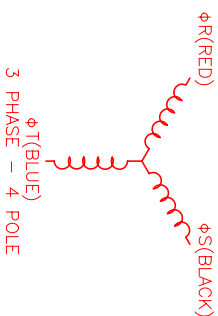
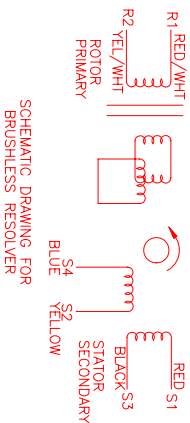
MIN HOLDING TORQUE: 10 IN-LBS
INPUT VOLTAGE: 24 VOLTS



CONNECTION CHART MOTOR/THERM/RES/BRAKE CONNECTOR: PT02E-14-18P(027) (270-00024)

MTR/THERM/RES/BRK	WIRE FUNCTION	WIRE COLOR	WIRE LEADS
A	φR	RED	RED
B	φS	BLACK	BLACK
C	φT	BLUE	BLUE
D	PE GND	GRN/YEL	GRN/YEL
U	THERM	BLACK	BLACK
N	THERM	BLACK	BLACK
H	SIN	YELLOW	YELLOW
G	COS GND	BLACK	BLACK
S	COS	RED	RED
F	SIN GND	BLUE	BLUE
R	REF GND	YEL/WHI	YEL/WHI
E	REF	RED/WHI	RED/WHI
J	RES SHLD	GRN/YEL	GRN/YEL
K	BRK (+)	DIODE	DIODE
L	BRK (-)	IN4007	IN4007
M	BRK SHLD	-	-
P	-	-	-
T	-	-	-

PT02E-14-18P(027)
MATING CONNECTOR:
PT06E-14-18S(476)



MTS	REV	DESCRIPTION	DATE	APPD.
	PRELIMINARY		1/29/99	LIN

NO.	PART NUMBER	DESCRIPTION	QTY.
1	MPM62ATF6G1R	110VAC 0.21HP 5000RPM	1
UNLESS SPECIFIED DIMENSIONS ARE IN INCHES AND DECIMAL FRACTIONS ARE IN THIRDS OF AN INCH UNLESS OTHERWISE NOTED. DIMENSIONS IN PARENTHESES ARE IN MILLIMETERS AND DECIMAL FRACTIONS ARE IN THIRDS OF A MILLIMETER UNLESS OTHERWISE NOTED. FINISHES ARE IN MILLIMETERS UNLESS OTHERWISE NOTED. TOLERANCES UNLESS OTHERWISE SPECIFIED: FRACTIONS: ±.0005 DECIMALS: ±.005 ANGLES: ±1/2°			
DATE:	1/29/99	TITLE:	"A"/110V/ENG/RES/CONN/BRK
DESIGNED BY:	LN	CHECKED BY:	LN
APPROVED BY:		DRAWING NUMBER:	MPM62ATF6G1R
SCALE:	1:1		

MTS
Automation Division