

② MOTOR DATA @ 230 VAC (TRAP)

MOTOR PARAMETERS	UNITS	VALUE
HORSEPOWER	HP	.22
KILOWATTS	KW	.16
MAX. OPERATING SPEED	N. MAX RPM	5000
SPEED @ RATED TORQUE	RPM	4000
* CONTINUOUS RATED TORQUE @ 4000 RPM	IN-LBS[Nm]	3.4[.38]
* CONTINUOUS STALL TORQUE	IN-LBS[Nm]	5.0[.56]
CONTINUOUS LINE CURRENT	AMPS	1.6
PEAK TORQUE	IN-LBS[Nm]	15.1[1.7]
PEAK CURRENT	AMPS	4.7
MAX. THEORETICAL ACCEL.	RAD/SEC <sup>2</sup>	123,770
TORQUE SENSITIVITY	Kt IN-LBS/AMP[Nm/AMP]	3.2[.36]
BACK EMF (LINE TO LINE)	Vrms/Krpm	28.3
D.C. RESISTANCE (P-P)	OHMS	18.5
INDUCTANCE (P-P)	MILLIHENRIES	26.4
ROTOR INERTIA W/ BRAKE	Jm [IN-LBS-SEC <sup>2</sup> ] [Kg-M <sup>2</sup> ]	.000122[.0000137]
STATIC FRICTION	Tf [IN-LBS] [Nm]	.5[.06]

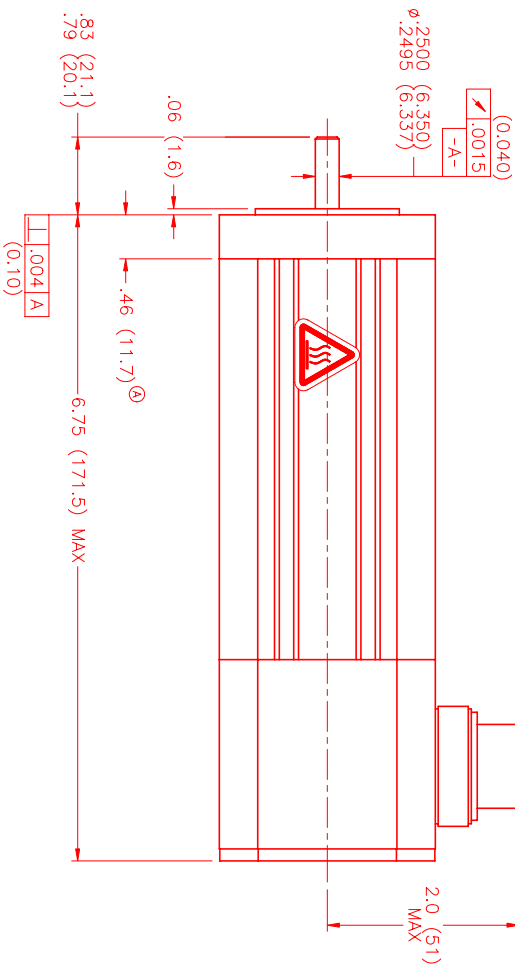
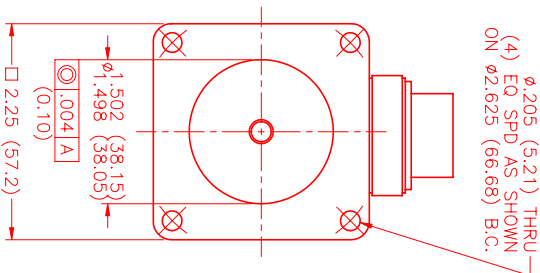
\*25°C AMBIENT WITH A MAXIMUM CASE TEMPERATURE OF 100°C ON MOTOR. MOTOR MOUNTED ON A 10" X 10" X 1/4" ALUMINUM HEATSINK. THERMOSTAT IN STATOR WINDINGS WILL OPEN IF WINDING TEMPERATURE EXCEEDS 155°C. THIS ALLOWS FOR AN APPROXIMATE +10% HEADROOM IN THE CONTINUOUS TORQUE RATING BEFORE THERMOSTAT OPENS.

MECHANICAL NOTES:

1. AXIAL LOAD: 15 LBS MAX
2. RADIAL LOAD: 20 LBS MAX @ 1" FROM FACE
3. MOTOR SEALED TO IP65.
4. MOTOR WEIGHT: 3.5 LBS [ 1.6 Kg]
5. MOTOR FINISH: BLACK EPOXY
6. MOTOR OUTPUT SHAFT: STAINLESS STEEL
7. INCHES (MILLIMETERS)

FAILSAFE BRAKE:

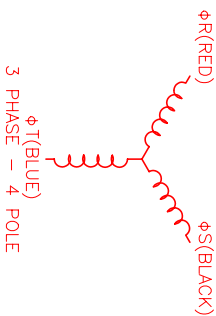
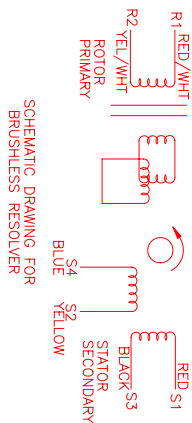
MIN HOLDING TORQUE: 10 IN-LBS  
INPUT VOLTAGE: 24 VOLTS



CONNECTION CHART  
MOTOR/THERM/RES/BRAKE CONNECTOR:  
PT02E-14-18P(027)  
(270-00024)

MTR/THERM/RES/BRK WIRE LEADS	PIN	WIRE FUNCTION	WIRE COLOR
A	φR	RED	RED
B	φS	BLACK	BLACK
C	φT	BLUE	BLUE
D	PE GND	GRN/YEL	GRN/YEL
U	THERM	BLACK	BLACK
N	THERM	BLACK	BLACK
H	SIN	YELLOW	YELLOW
G	COS GND	BLACK	BLACK
S	COS	RED	RED
F	SIN GND	BLUE	BLUE
R	REF GND	YEL/WHI	YEL/WHI
E	REF	RED/WHI	RED/WHI
J	RES SHLD	GRN/YEL	GRN/YEL
K	BRK (+)	DIODE	DIODE
L	BRK (-)	IN4007	IN4007
M	BRK SHLD	-	-
P	-	-	-
T	-	-	-

PT02E-14-18P(027)  
MATING CONNECTOR:  
PT06E-14-18S(476)



REV.	DESCRIPTION	DATE	APPD.
A	PRELIMINARY	8/20/99	MVS
A	E.C.O. - 583	7/25/00	LIN

NO.	PART NUMBER	DESCRIPTION	QTY.
1	MPM662BTG6G1R	MOTOR	1

UNLESS SPECIFIED	DESCRIPTION	QTY.
DRINK: 400 # 205	MVS	1
DRINK: 400 # 200	MVS	1
DRINK: 400 # 172	MVS	1
DATE: 8/20/99	TITLE: 'B' /230 /ENG/RES/CONN/BRK	REV: A
CHECKED: MVS	DRAWN: MPM662BTG6G1R	SCALE: 1:1