

MOTOR DATA @ 230 VAC (TRAP)

MOTOR PARAMETERS	UNITS	VALUE
MOTOR HORSEPOWER	HP RATED	.27
	KW RATED	.20
MAX. OPERATING SPEED	N. MAX RPM	3300
SPEED @ RATED TORQUE	N RATED RPM	2800
* CONTINUOUS RATED TORQUE @ 2800 RPM	IN-LBS[Nm]	6.01(.68)
* CONTINUOUS STALL TORQUE	IN-LBS[Nm]	7.51(.85)
CONTINUOUS LINE CURRENT	AMPS	2.3
PEAK TORQUE	IN-LBS[Nm]	22.5(2.54)
PEAK CURRENT	AMPS	7.4
MAX. THEORETICAL ACCEL.	RAD/SEC ²	175,781
TORQUE SENSITIVITY	Kt [IN-LBS/AMP] [Nm/AMP]	3.21(.36)
BACK EMF (LINE TO LINE)	Vrms/Krpm	28.3
D.C. RESISTANCE (P-P)	OHMS	14.4
INDUCTANCE (P-P)	MILLIHENRIES	17.9
ROTOR INERTIA	Jm [IN-LBS-SEC ²] [Kg-M ²]	0.00128(.0000145)
STATIC FRICTION	Tf [IN-LBS] [Nm]	.65(.073)

*25°C AMBIENT WITH A MAXIMUM CASE TEMPERATURE OF 100°C ON MOTOR. MOTOR MOUNTED ON A 10" X 10" X 10" X 1/4" ALUMINUM HEATSINK. THERMOSTAT IN STATOR WINDINGS WILL OPEN IF WINDING TEMPERATURE EXCEEDS 155°C. THIS ALLOWS FOR AN APPROXIMATE +10% HEADROOM IN THE CONTINUOUS TORQUE RATING BEFORE THERMOSTAT OPENS.

MECHANICAL NOTES:

- AXIAL LOAD: 15 LBS MAX
- RADIAL LOAD: 20 LBS MAX @ 1" FROM FACE
- MOTOR SEALED TO IP65.
- MOTOR WEIGHT: 3.0 LBS. [1.4 Kg]
- MOTOR FINISH: BLACK EPOXY
- MOTOR OUTPUT SHAFT: STAINLESS STEEL
- INCHES (MILLIMETERS)

ENCODER: (290-00056)
OIH35-2000P4-L6-5V

CONNECTION CHART MOTOR/ENCODER/THERM CONNECTOR: PTOZE-16-23P(027) (270-00219)

MOTOR WIRE LEADS	WIRE FUNCTION	WIRE COLOR
A	ΦR	BLACK
B	ΦS	BLUE
C	ΦT	BLUE
D	PE GND	GRN/YEL

ENC/THERM WIRE LEADS	PIN	WIRE FUNCTION	WIRE COLOR
	T	GROUND	BLACK
	E	+5VDC	RED
	F	CH A	BLUE
	U	CH A	BLUE/BLK
	G	CH B	GREEN
	V	CH B	GRN/BLK
	H	CH Z	YELLOW
	W	CH Z	YEL/BLK
	J	CH U	BROWN
	K	CH U	BRN/BLK
	X	CH V	GRAY
	L	CH V	GRAY/BLK
	Y	CH W	WHITE
	M	CH W	WHT/BLK
	N	GND/CABLE SHLD	BLACK
	S	THERM	BLACK
	P	THERM	BLACK
	R	—	—
	Z	—	—

MOTOR & HALL POSITION CHART

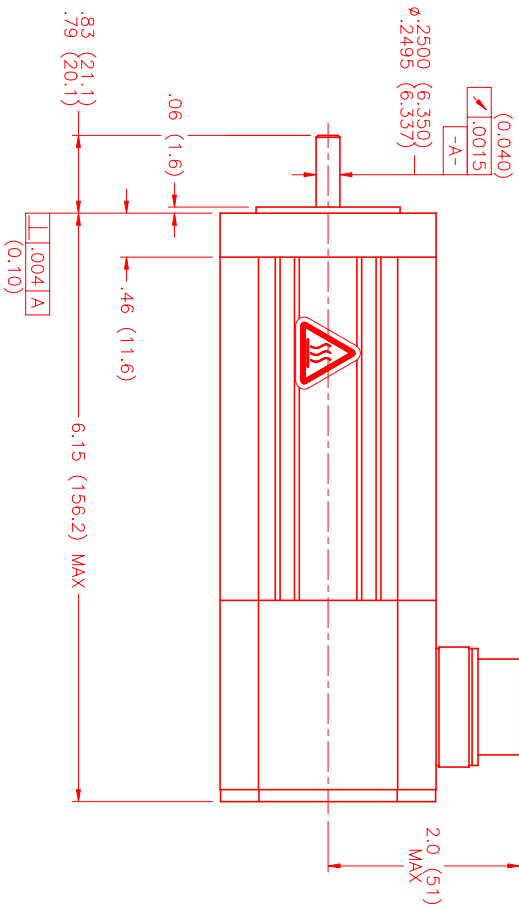
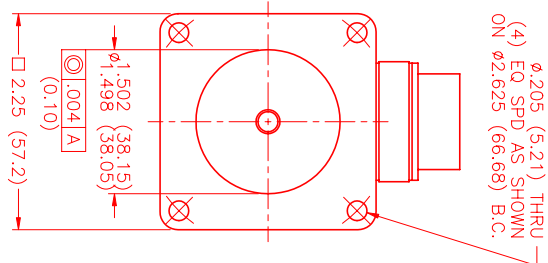
HALL LEADS	BROWN	GRAY	WHITE
MOTOR LEADS	BLACK respect to RED	RED respect to BLUE	BLUE respect to BLACK
VIEW ON THE OSCILLOSCOPE	AAA	AAA	AAA

*MOTOR ROTATION C/W (COUNTER CLOCKWISE) (LOOKING AT THE FACE OF THE MOTOR)



ΦR(RED) ΦS(BLACK)

ΦT(BLUE)
3 PHASE - 4 POLE



NO.	PART NUMBER	DESCRIPTION	QTY.
UNLESS SPECIFIED			
DECIMAL: .001			
FRACTIONAL: 1/32			
ANGLES: 1/2°			
DATE: 8/26/99			
CHECKED:			
APPROVED:			
DRAWN:			
MATERIAL:			
SCALE: 1:1			

MTS Automation Division

REV.	DESCRIPTION	DATE	APP.
PRELIMINARY		4/12/00	LIN

REVISIONS

REV.	DESCRIPTION	DATE	APP.
PRELIMINARY		4/12/00	LIN

DATE: 8/26/99
DRAWING NUMBER: MPM663BTG6JN1N