

MOTOR DATA @ 110 VAC (SINE)

MOTOR PARAMETERS	UNITS	VALUE
HORSEPOWER	HP RATED	0.48
	KW RATED	0.35
MAX. OPERATING SPEED	N. MAX RPM	6000
SPEED @ RATED TORQUE	N RATED RPM	5000
* CONTINUOUS RATED TORQUE @ 5000 RPM	IN-LBS [Nm]	6.0 [0.68]
* CONTINUOUS STALL TORQUE	IN-LBS [Nm]	10.0 [1.13]
CONTINUOUS LINE CURRENT	AMPS (RMS) (φ)	3.5
PEAK TORQUE	IN-LBS [Nm]	30.0 [3.4]
PEAK CURRENT	AMPS (RMS) (φ)	10.6
MAX. THEORETICAL ACCEL.	RAD/SEC ²	188,679
TORQUE SENSITIVITY	Kt [IN-LBS/AMP (RMS) (φ)] / (Nm / AMP (RMS) (φ))	2.83 [0.32]
BACK EMF (LINE TO LINE)	Vrms / RPM	17.8
D.C. RESISTANCE (P-P)	OHMS	3.1
INDUCTANCE (P-P)	MILLIHENRIES	5.1
ROTOR INERTIA	Jm [IN-LBS-SEC ²] [Kg-M ²]	0.000159 [0.0000179]
STATIC FRICTION	Tf [IN-LBS] [Nm]	0.8 [0.09]

*25°C AMBIENT WITH A MAXIMUM CASE TEMPERATURE OF 100°C ON MOTOR. MOTOR MOUNTED ON A 10" X 10" X 1/4" ALUMINUM HEATSINK. THERMOSTAT IN STATOR WINDINGS WILL OPEN IF WINDING TEMPERATURE EXCEEDS 155°C. THIS ALLOWS FOR AN APPROXIMATE +10% HEADROOM IN THE CONTINUOUS TORQUE RATING BEFORE THERMOSTAT OPENS.

MECHANICAL NOTES:

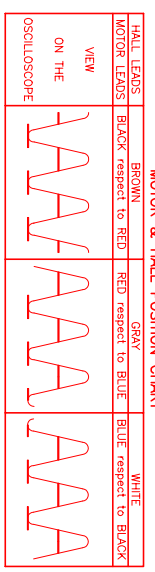
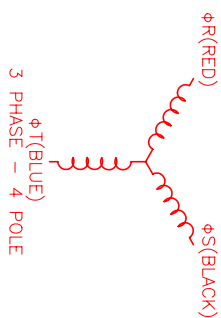
- AXIAL LOAD: 15 LBS MAX
- RADIAL LOAD: 20 LBS MAX @ 1" FROM FACE
- MOTOR SEALED TO IP65.
- MOTOR WEIGHT: 3.6 LBS. [1.6 kg]
- MOTOR FINISH: BLACK EPOXY
- MOTOR OUTPUT SHAFT: STAINLESS STEEL
- INCHES (MILLIMETERS)

ENCODER: (290-00056)
OH35-2000P4-L6-SV

CONNECTION CHART MOTOR/ENCODER/THERM CONNECTOR: PT02E-16-23P(027) (270-00219)

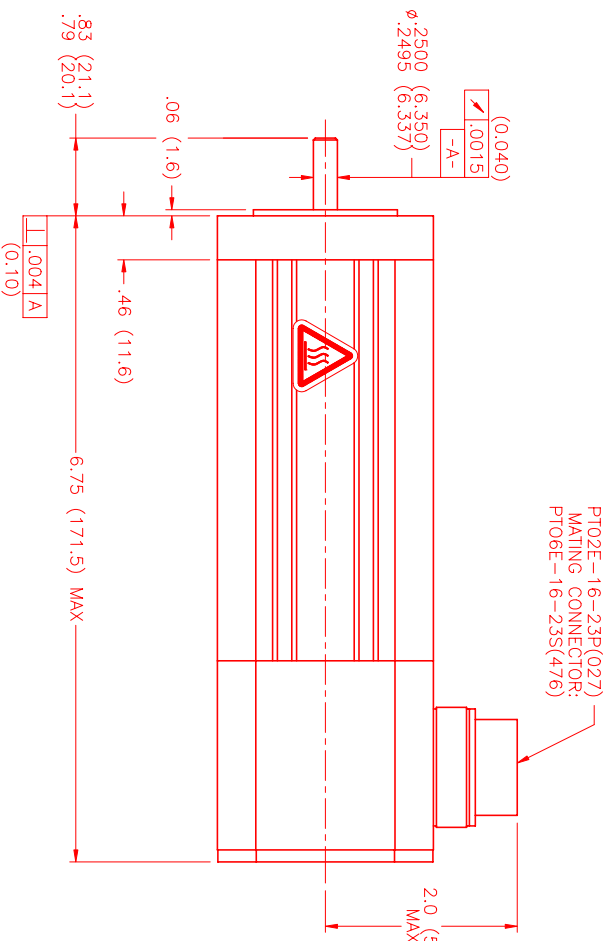
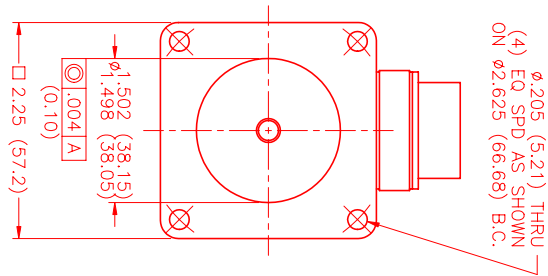
ENC/THERM/BRK	WIRE FUNCTION	WIRE COLOR	WIRE LEADS
PT02E	GROUND	BLACK	A
	+5VDC	RED	B
	CH A	BLUE	C
	CH A\	BLUE/BLK	D
	CH B	GREEN	
	CH B\	GRN/BLK	
	CH Z	YELLOW	
	CH Z\	YEL/BLK	
	CH U	BROWN	
	CH U\	BRN/BLK	
	CH V	GRAY	
	CH V\	GRAY/BLK	
	CH W	WHITE	
	CH W\	WHT/BLK	
	GND/CABLE	SHLD	
	THERM	BLACK	
	THERM	BLACK	

MOTOR WIRE LEADS	WIRE FUNCTION	WIRE COLOR
A	φR	RED
B	φS	BLACK
C	φT	BLUE
D	PE GND	GRN/YEL



*MOTOR ROTATION CCW (COUNTER CLOCKWISE) (LOOKING AT THE FACE OF THE MOTOR)

WAVE REPRESENTING STATOR OUTPUT
WAVE REPRESENTING HALL SENSOR



NO.	PART NUMBER	DESCRIPTION	QTY.
1	PT02E-16-23P(027)	MATING CONNECTOR	

UNLESS SPECIFIED

DECIMAL ANG ± .005
FRACTIONAL ANG ± .010
DIMENSIONS TO CENTER UNLESS OTHERWISE SPECIFIED
DIMENSIONS TO SURFACE UNLESS OTHERWISE SPECIFIED
DIMENSIONS TO CENTER UNLESS OTHERWISE SPECIFIED
DIMENSIONS TO SURFACE UNLESS OTHERWISE SPECIFIED

DATE: 12/5/00
DRAWN: MS
CHECKED: MS
APPROVED: MS

TITLE: "A" SINE/110/ENG/TZ/CONN
MATERIAL: MPM664ASF6JN1N
SCALE: 1:1

REV.	DESCRIPTION	DATE	APP.
PRELIMINARY		12/5/00	MS

FORMING NUMBER: MPM664ASF6JN1N