

**MOTOR DATA @ 230 VAC (TRAP)**

MOTOR PARAMETERS	UNITS	VALUE
HORSEPOWER	HP RATED	0.48
	KW RATED	0.35
MAX. OPERATING SPEED	N. MAX RPM	6000
SPEED @ RATED TORQUE	N RATED RPM	5000
* CONTINUOUS RATED TORQUE @ 5000 RPM	IN-LBS [Nm]	8.0 [ .90]
* CONTINUOUS STALL TORQUE	IN-LBS [Nm]	10.0 [ 1.12]
CONTINUOUS LINE CURRENT	AMPS	3.1
PEAK TORQUE	IN-LBS [Nm]	30.0 [ 3.4]
PEAK CURRENT	AMPS	9.4 [ 1.06]
MAX. THEORETICAL ACCEL.	RAD/SEC <sup>2</sup>	188,679
TORQUE SENSITIVITY	Kt [IN-LBS/AMP] [Nm/AMP]	3.2 [ .36]
BACK EMF (LINE TO LINE)	Vrms/Krpm	28.3
D.C. RESISTANCE (P-P)	OHMS	7.0
INDUCTION (P-P)	MILLIHENRIES	11.0
ROTOR INERTIA	Jm [IN-LBS-SEC <sup>2</sup> ] [Kg-M <sup>2</sup> ]	.000159 [ .0000179]
STATIC FRICTION	Tf [IN-LBS] [Nm]	0.8 [ .09]

\*25C AMBIENT WITH A MAXIMUM CASE TEMPERATURE OF 100°C ON MOTOR. MOTOR MOUNTED ON A 10" X 10" X 1/4" ALUMINUM HEATSINK. THERMOSTAT IN STATOR WINDINGS WILL OPEN IF WINDING TEMPERATURE EXCEEDS 155°C. THIS ALLOWS FOR AN APPROXIMATE +10% HEADROOM IN THE CONTINUOUS TORQUE RATING BEFORE THERMOSTAT OPENS.

**MECHANICAL NOTES:**

- AXIAL LOAD: 15 LBS MAX
- RADIAL LOAD: 20 LBS MAX @ 1" FROM FACE
- MOTOR SEALED TO IP65.
- MOTOR WEIGHT: 3.6 LBS. [ 1.6 kg]
- MOTOR FINISH: BLACK EPOXY
- MOTOR OUTPUT SHAFT: STAINLESS STEEL
- INCHES (MILLIMETERS)

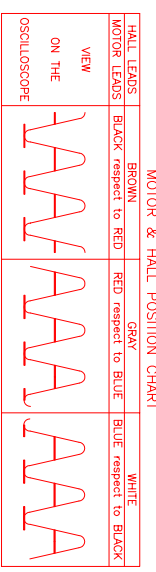
**ENCODER: (290-00056)**  
OH35-2000P4-L6-5V

**CONNECTION CHART**

MOTOR/ENCODER/THERM CONNECTOR:  
PT02E-16-23P(027)  
(270-00219)

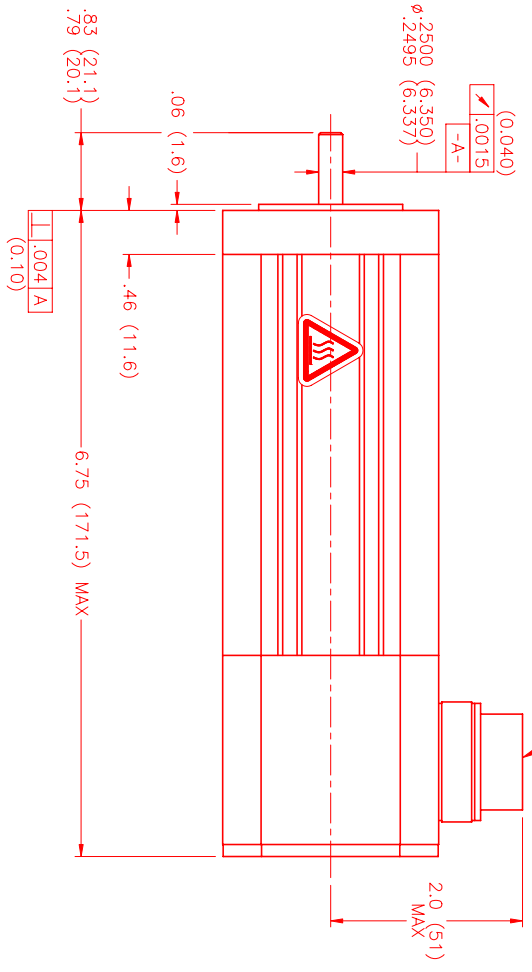
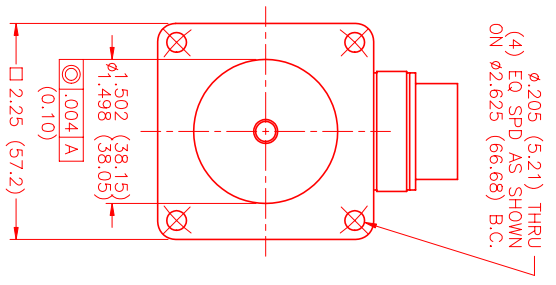
ENC/THERM WIRE	WIRE FUNCTION	WIRE COLOR	LEADS
PIN	FUNCTION	COLOR	
T	GROUND	BLACK	
E	+5VDC	RED	
F	CH A	BLUE	
U	CH A\	BLUE/BLK	
G	CH B	GREEN	
V	CH B\	GRN/BLK	
H	CH Z	YELLOW	
W	CH Z\	YEL/BLK	
J	CH U	BROWN	
K	CH U\	BRN/BLK	
X	CH V	GRAY	
L	CH V\	GRAY/BLK	
Y	CH W	WHITE	
M	CH W\	WHT/BLK	
N	GND/CABLE	SHLD	
S	THERM	BLACK	
R	THERM	BLACK	
P			
Z			

MOTOR WIRE	WIRE FUNCTION	WIRE COLOR	LEADS
PIN	FUNCTION	COLOR	
A	ΦR	RED	
B	ΦS	BLACK	
C	ΦT	BLUE	
D	PE GND	GRN/YEL	

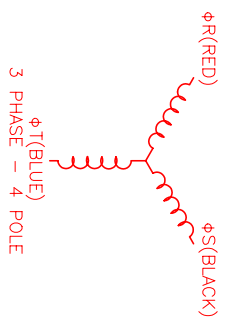


\*MOTOR ROTATION CW (COUNTER CLOCKWISE) (LOOKING AT THE FACE OF THE MOTOR)

WAVE REPRESENTING STATOR OUTPUT  
WAVE REPRESENTING HALL SENSOR



PT02E-16-23P(027)  
MATING CONNECTOR:  
PT06E-16-23S(476)



NO. PART NUMBER	DESCRIPTION	QTY.
UNLESS SPECIFIED		
DECIMAL ANG ± .005		
FRACTIONAL ANG ± .002		
DIAMET ± .002		
ANGLE ± 1/2°		
DRAWN: L/N		
DATE: 9/28/99		
CHECKED:		
APPROVED:		
ISSUING ENGINEER: MPM664BTG6JN1N		SCALE: 1:1

REV.	DESCRIPTION	DATE	APP.
PRELIMINARY		1/4/00	LIN

**MTS**  
Automation Division