

② MOTOR DATA @ 230 VAC (TRAP)

MOTOR PARAMETERS	UNITS	VALUE
HORSEPOWER	HP	.48
KILOWATTS	KW	.35
MAX. OPERATING SPEED	N. MAX RPM	6000
SPEED @ RATED TORQUE	N RATED RPM	5000
* CONTINUOUS RATED TORQUE @ 5000 RPM	IN-LBS[Nm]	6.0[0.68]
* CONTINUOUS STALL TORQUE	IN-LBS[Nm]	10.0[1.13]
CONTINUOUS LINE CURRENT	AMPS	3.1
PEAK TORQUE	IN-LBS[Nm]	30.0[3.4]
PEAK CURRENT	AMPS	9.4
MAX. THEORETICAL ACCEL.	RAD/SEC ²	163.043
TORQUE SENSITIVITY	Kt [IN-LBS/AMPI Nm/AMP]	3.2[0.36]
BACK EMF (LINE TO LINE)	Vrms/Krpm	28.3
D.C. RESISTANCE (P-P)	OHMS	7.0
INDUCTANCE (P-P)	MILLIHENRIES	11.0
ROTOR INERTIA W/BRAKE	Jm [IN-LBS-SEC ²] Kg-M ²	.000184[0.000207]
STATIC FRICTION	Tf [IN-LBS] [Nm]	0.8[0.09]

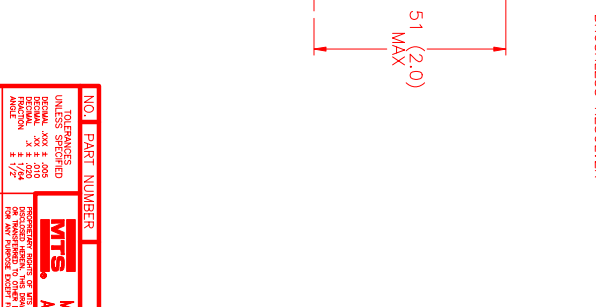
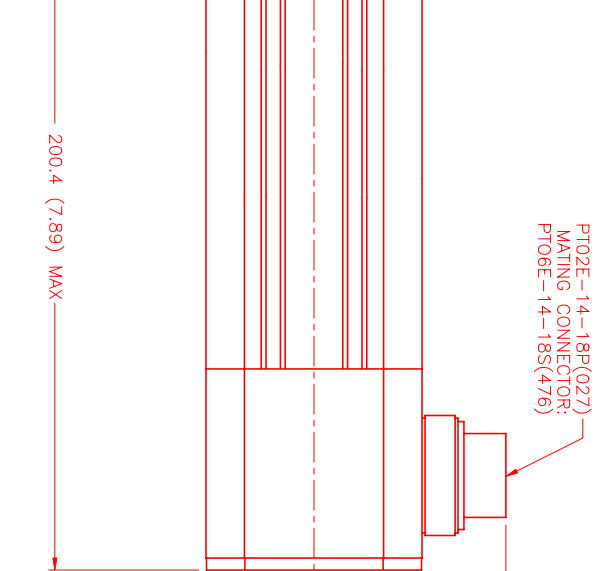
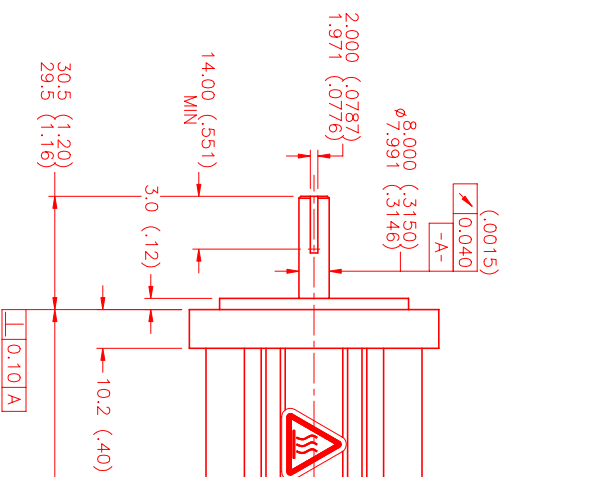
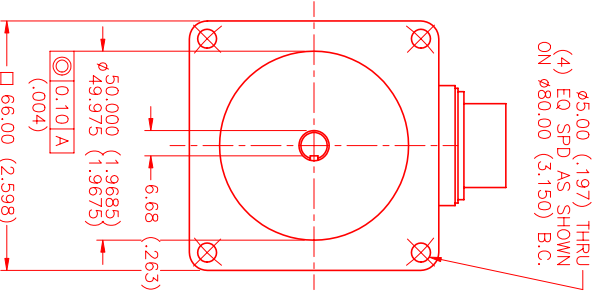
*25°C AMBIENT WITH A MAXIMUM CASE TEMPERATURE OF 100°C ON MOTOR. MOTOR MOUNTED ON A 10" X 10" X 1/4" ALUMINUM HEATSINK. THERMOSTAT IN STATOR WINDINGS WILL OPEN IF WINDING TEMPERATURE EXCEEDS 155°C. THIS ALLOWS FOR AN APPROXIMATE +10% HEADROOM IN THE CONTINUOUS TORQUE RATING BEFORE THERMOSTAT OPENS.

MECHANICAL NOTES:

1. AXIAL LOAD: 15 LBS MAX
2. RADIAL LOAD: 20 LBS MAX @ 1" FROM FACE
3. MOTOR SEALED TO IP65.
4. MOTOR WEIGHT: 4.5 LBS. [2.0 Kg]
5. MOTOR FINISH: BLACK EPOXY
6. MOTOR OUTPUT SHAFT: STAINLESS STEEL
7. MILLIMETERS (INCHES)

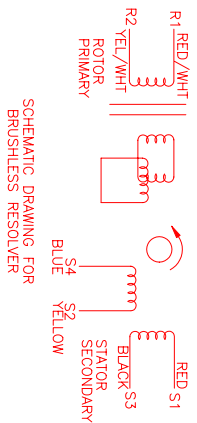
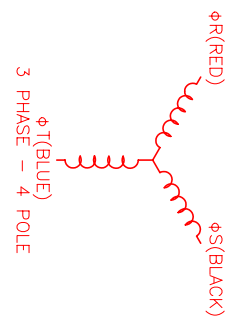
FAILSAFE BRAKE:

MIN HOLDING TORQUE: 10 IN-LBS
INPUT VOLTAGE: 24 VOLTS



CONNECTION CHART
MOTOR/THERM/RES/BRAKE CONNECTOR:
PT02E-14-18P(027)
(270-00024)

MTR/THERM/RES/BRK	WIRE FUNCTION	WIRE COLOR	WIRE LEADS
A	φR	RED	RED
B	φS	BLACK	BLACK
C	φT	BLUE	BLUE
D	PE GND	GRN/YEL	GRN/YEL
U	THERM	BLACK	BLACK
N	THERM	BLACK	BLACK
H	SIN	YELLOW	YELLOW
G	COS GND	BLACK	BLACK
S	COS	RED	RED
F	SIN GND	BLUE	BLUE
R	REF GND	YEL/WHI	YEL/WHI
E	REF	RED/WHI	RED/WHI
J	RES SHLD	GRN/YEL	GRN/YEL
K	BRK (+)	DIODE	DIODE
L	BRK (-)	IN4007	IN4007
M	BRK SHLD	-	-
P	-	-	-
T	-	-	-



PT02E-14-18P(027)
MATING CONNECTOR:
PT06E-14-18S(476)

REV.	DESCRIPTION	DATE	APP.
A	E.C.O. - 584	8/1/00	MVS

NO.	PART NUMBER	DESCRIPTION	QTY.
1	MPM664BTG7G1R	230VAC MET/RES/CONN/BRK	1

UNLESS SPECIFIED	DESCRIPTION
DECIMAL: .001	FRONT VIEW
FRONT VIEW	FRONT VIEW
DATE: 2/26/99	DATE: 2/26/99
CHECKED: MVS	CHECKED: MVS
APPROVED: MVS	APPROVED: MVS

NO.	PART NUMBER	DESCRIPTION	QTY.
1	MPM664BTG7G1R	230VAC MET/RES/CONN/BRK	1

UNLESS SPECIFIED	DESCRIPTION
DECIMAL: .001	FRONT VIEW
FRONT VIEW	FRONT VIEW
DATE: 2/26/99	DATE: 2/26/99
CHECKED: MVS	CHECKED: MVS
APPROVED: MVS	APPROVED: MVS

UNLESS SPECIFIED	DESCRIPTION
DECIMAL: .001	FRONT VIEW
FRONT VIEW	FRONT VIEW
DATE: 2/26/99	DATE: 2/26/99
CHECKED: MVS	CHECKED: MVS
APPROVED: MVS	APPROVED: MVS

UNLESS SPECIFIED	DESCRIPTION
DECIMAL: .001	FRONT VIEW
FRONT VIEW	FRONT VIEW
DATE: 2/26/99	DATE: 2/26/99
CHECKED: MVS	CHECKED: MVS
APPROVED: MVS	APPROVED: MVS

UNLESS SPECIFIED	DESCRIPTION
DECIMAL: .001	FRONT VIEW
FRONT VIEW	FRONT VIEW
DATE: 2/26/99	DATE: 2/26/99
CHECKED: MVS	CHECKED: MVS
APPROVED: MVS	APPROVED: MVS

UNLESS SPECIFIED	DESCRIPTION
DECIMAL: .001	FRONT VIEW
FRONT VIEW	FRONT VIEW
DATE: 2/26/99	DATE: 2/26/99
CHECKED: MVS	CHECKED: MVS
APPROVED: MVS	APPROVED: MVS

UNLESS SPECIFIED	DESCRIPTION
DECIMAL: .001	FRONT VIEW
FRONT VIEW	FRONT VIEW
DATE: 2/26/99	DATE: 2/26/99
CHECKED: MVS	CHECKED: MVS
APPROVED: MVS	APPROVED: MVS

UNLESS SPECIFIED	DESCRIPTION
DECIMAL: .001	FRONT VIEW
FRONT VIEW	FRONT VIEW
DATE: 2/26/99	DATE: 2/26/99
CHECKED: MVS	CHECKED: MVS
APPROVED: MVS	APPROVED: MVS

UNLESS SPECIFIED	DESCRIPTION
DECIMAL: .001	FRONT VIEW
FRONT VIEW	FRONT VIEW
DATE: 2/26/99	DATE: 2/26/99
CHECKED: MVS	CHECKED: MVS
APPROVED: MVS	APPROVED: MVS

UNLESS SPECIFIED	DESCRIPTION
DECIMAL: .001	FRONT VIEW
FRONT VIEW	FRONT VIEW
DATE: 2/26/99	DATE: 2/26/99
CHECKED: MVS	CHECKED: MVS
APPROVED: MVS	APPROVED: MVS

UNLESS SPECIFIED	DESCRIPTION
DECIMAL: .001	FRONT VIEW
FRONT VIEW	FRONT VIEW
DATE: 2/26/99	DATE: 2/26/99
CHECKED: MVS	CHECKED: MVS
APPROVED: MVS	APPROVED: MVS

UNLESS SPECIFIED	DESCRIPTION
DECIMAL: .001	FRONT VIEW
FRONT VIEW	FRONT VIEW
DATE: 2/26/99	DATE: 2/26/99
CHECKED: MVS	CHECKED: MVS
APPROVED: MVS	APPROVED: MVS

UNLESS SPECIFIED	DESCRIPTION
DECIMAL: .001	FRONT VIEW
FRONT VIEW	FRONT VIEW
DATE: 2/26/99	DATE: 2/26/99
CHECKED: MVS	CHECKED: MVS
APPROVED: MVS	APPROVED: MVS

UNLESS SPECIFIED	DESCRIPTION
DECIMAL: .001	FRONT VIEW
FRONT VIEW	FRONT VIEW
DATE: 2/26/99	DATE: 2/26/99
CHECKED: MVS	CHECKED: MVS
APPROVED: MVS	APPROVED: MVS

UNLESS SPECIFIED	DESCRIPTION
DECIMAL: .001	FRONT VIEW
FRONT VIEW	FRONT VIEW
DATE: 2/26/99	DATE: 2/26/99
CHECKED: MVS	CHECKED: MVS
APPROVED: MVS	APPROVED: MVS

UNLESS SPECIFIED	DESCRIPTION
DECIMAL: .001	FRONT VIEW
FRONT VIEW	FRONT VIEW
DATE: 2/26/99	DATE: 2/26/99
CHECKED: MVS	CHECKED: MVS
APPROVED: MVS	APPROVED: MVS

UNLESS SPECIFIED	DESCRIPTION
DECIMAL: .001	FRONT VIEW
FRONT VIEW	FRONT VIEW
DATE: 2/26/99	DATE: 2/26/99
CHECKED: MVS	CHECKED: MVS
APPROVED: MVS	APPROVED: MVS

UNLESS SPECIFIED	DESCRIPTION
DECIMAL: .001	FRONT VIEW
FRONT VIEW	FRONT VIEW
DATE: 2/26/99	DATE: 2/26/99
CHECKED: MVS	CHECKED: MVS
APPROVED: MVS	APPROVED: MVS

UNLESS SPECIFIED	DESCRIPTION
DECIMAL: .001	FRONT VIEW
FRONT VIEW	FRONT VIEW
DATE: 2/26/99	DATE: 2/26/99
CHECKED: MVS	CHECKED: MVS
APPROVED: MVS	APPROVED: MVS

UNLESS SPECIFIED	DESCRIPTION
DECIMAL: .001	FRONT VIEW
FRONT VIEW	FRONT VIEW
DATE: 2/26/99	DATE: 2/26/99
CHECKED: MVS	CHECKED: MVS
APPROVED: MVS	APPROVED: MVS

UNLESS SPECIFIED	DESCRIPTION
DECIMAL: .001	FRONT VIEW
FRONT VIEW	FRONT VIEW
DATE: 2/26/99	DATE: 2/26/99
CHECKED: MVS	CHECKED: MVS
APPROVED: MVS	APPROVED: MVS

UNLESS SPECIFIED	DESCRIPTION
DECIMAL: .001	FRONT VIEW
FRONT VIEW	FRONT VIEW
DATE: 2/26/99	DATE: 2/26/99
CHECKED: MVS	CHECKED: MVS
APPROVED: MVS	APPROVED: MVS

UNLESS SPECIFIED	DESCRIPTION
DECIMAL: .001	FRONT VIEW
FRONT VIEW	FRONT VIEW
DATE: 2/26/99	DATE: 2/26/99
CHECKED: MVS	CHECKED: MVS
APPROVED: MVS	APPROVED: MVS

UNLESS SPECIFIED	DESCRIPTION
DECIMAL: .001	FRONT VIEW
FRONT VIEW	FRONT VIEW
DATE: 2/26/99	DATE: 2/26/99
CHECKED: MVS	CHECKED: MVS
APPROVED: MVS	APPROVED: MVS

UNLESS SPECIFIED	DESCRIPTION
DECIMAL: .001	FRONT VIEW
FRONT VIEW	FRONT VIEW
DATE: 2/26/99	DATE: 2/26/99
CHECKED: MVS	CHECKED: MVS
APPROVED: MVS	APPROVED: MVS

UNLESS SPECIFIED	DESCRIPTION
DECIMAL: .001	FRONT VIEW
FRONT VIEW	FRONT VIEW
DATE: 2/26/99	DATE: 2/26/99
CHECKED: MVS	CHECKED: MVS
APPROVED: MVS	APPROVED: MVS

UNLESS SPECIFIED	DESCRIPTION
DECIMAL: .001	FRONT VIEW
FRONT VIEW	FRONT VIEW
DATE: 2/26/99	DATE: 2/26/99
CHECKED: MVS	CHECKED: MVS
APPROVED: MVS	APPROVED: MVS

UNLESS SPECIFIED	DESCRIPTION
DECIMAL: .001	FRONT VIEW
FRONT VIEW	FRONT VIEW
DATE: 2/26/99	DATE: 2/26/99
CHECKED: MVS	CHECKED: MVS
APPROVED: MVS	APPROVED: MVS

UNLESS SPECIFIED	DESCRIPTION
DECIMAL: .001	FRONT VIEW
FRONT VIEW	FRONT VIEW
DATE: 2/26/99	DATE: 2/26/99
CHECKED: MVS	CHECKED: MVS
APPROVED: MVS	APPROVED: MVS

UNLESS SPECIFIED	DESCRIPTION
DECIMAL: .001	FRONT VIEW
FRONT VIEW	FRONT VIEW
DATE: 2/26/99	DATE: 2/26/99
CHECKED: MVS	CHECKED: MVS
APPROVED: MVS	APPROVED: MVS

UNLESS SPECIFIED	DESCRIPTION
DECIMAL: .001	FRONT VIEW
FRONT VIEW	FRONT VIEW
DATE: 2/26/99	DATE: 2/26/99
CHECKED: MVS	CHECKED: MVS
APPROVED: MVS	APPROVED: MVS

UNLESS SPECIFIED	DESCRIPTION
DECIMAL: .001	FRONT VIEW
FRONT VIEW	FRONT VIEW
DATE: 2/26/99	DATE: 2/26/99
CHECKED: MVS	CHECKED: MVS
APPROVED: MVS	APPROVED: MVS

UNLESS SPECIFIED	DESCRIPTION
DECIMAL: .001	FRONT VIEW
FRONT VIEW	FRONT VIEW
DATE: 2/26/99	DATE: 2/26/99
CHECKED: MVS	CHECKED: MVS
APPROVED: MVS	APPROVED: MVS

UNLESS SPECIFIED	DESCRIPTION
DECIMAL: .001	FRONT VIEW
FRONT VIEW	FRONT VIEW
DATE: 2/26/99	DATE: 2/26/99
CHECKED: MVS	CHECKED: MVS
APPROVED: MVS	APPROVED: MVS

UNLESS SPECIFIED	DESCRIPTION
DECIMAL: .001	FRONT VIEW
FRONT VIEW	FRONT VIEW
DATE: 2/26/99	DATE: 2/26/99
CHECKED: MVS	CHECKED: MVS
APPROVED: MVS	APPROVED: MVS

UNLESS SPECIFIED	DESCRIPTION
DECIMAL: .001	FRONT VIEW
FRONT VIEW	FRONT VIEW
DATE: 2/26/99	DATE: 2/26/99
CHECKED: MVS	CHECKED: MVS
APPROVED: MVS	APPROVED: MVS

UNLESS SPECIFIED	DESCRIPTION
DECIMAL: .001	FRONT VIEW
FRONT VIEW	FRONT VIEW
DATE: 2/26/99	DATE: 2/26/99
CHECKED: MVS	CHECKED: MVS
APPROVED: MVS	APPROVED: MVS

UNLESS SPECIFIED	DESCRIPTION
DECIMAL: .001	FRONT VIEW
FRONT VIEW	FRONT VIEW
DATE: 2/26/99	DATE: 2/26/99
CHECKED: MVS	CHECKED: MVS
APPROVED: MVS	APPROVED: MVS

UNLESS SPECIFIED	DESCRIPTION
DECIMAL: .001	FRONT VIEW
FRONT VIEW	FRONT VIEW
DATE: 2/26/99	DATE: 2/26/99
CHECKED: MVS	CHECKED: MVS
APPROVED: MVS	APPROVED: MVS

UNLESS SPECIFIED	DESCRIPTION