

MOTOR DATA @ 48 VDC (TRAP)

MOTOR PARAMETERS	UNITS	VALUE
HORSEPOWER	HP	0.08
KILOWATTS	KW	0.06
MAX. OPERATING SPEED	N. MAX RPM	1200
SPEED @ RATED TORQUE	RATED RPM	450
* CONTINUOUS RATED TORQUE @ 450 RPM	IN-LBS[Nm]	11.0[1.2]
* CONTINUOUS STALL TORQUE	IN-LBS[Nm]	11.0[1.2]
CONTINUOUS LINE CURRENT	AMPS	4.0
PEAK TORQUE	IN-LBS[Nm]	33.0[3.7]
PEAK CURRENT	AMPS	11.0
MAX. THEORETICAL ACCEL.	RAD/SEC ²	122,222
TORQUE SENSITIVITY	Kt [N-LB/AMP][Nm/AMP]	2.91[0.329]
BACK EMF (LINE TO LINE)	Vrms/Krpm	25.9
D.C. RESISTANCE (P-P)	OHMS	3.7
INDUCTANCE (P-P)	MILLIHENRIES	7.3
ROTOR INERTIA	Jm [IN-LBS-SEC ²][Kg-M ²]	0.00027[0.000031]
STATIC FRICTION	Tf [IN-LBS][Nm]	0.8[0.09]

*25°C AMBIENT WITH A MAXIMUM CASE TEMPERATURE OF 85°C ON MOTOR. MOTOR MOUNTED ON A 1/2" X 1/2" X 1/2" ALUMINUM HEATSINK. THERMOSTAT IN STATOR WINDINGS WILL OPEN IF WINDING TEMPERATURE EXCEEDS 155°C. THIS ALLOWS FOR AN APPROXIMATE +10% HEADROOM IN THE CONTINUOUS TORQUE RATING BEFORE THERMOSTAT OPENS.

MECHANICAL NOTES:

- AXIAL LOAD: 20 LBS MAX
- RADIAL LOAD: 35 LBS MAX @ 1" FROM FACE
- MOTOR SEALED TO IP65.
- MOTOR WEIGHT: 4.1 LBS. [1.9 Kg]
- MOTOR FINISH: BLACK EPOXY
- MOTOR OUTPUT SHAFT: STAINLESS STEEL
- MILLIMETERS (INCHES)
- THIS MOTOR'S OUTPUT KEY IS A PRESS FIT.

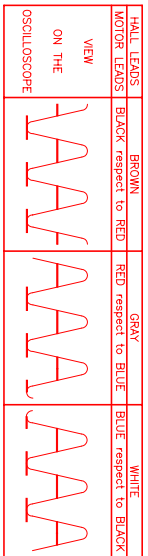
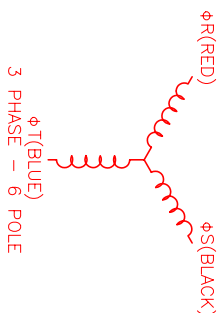
ENCODER: (290-00155)

OH35-1000P6-L6-5V

CONNECTION CHART MOTOR/ENCODER/THERM CONNECTOR: PT02E-16-23P(027) (270-00219)

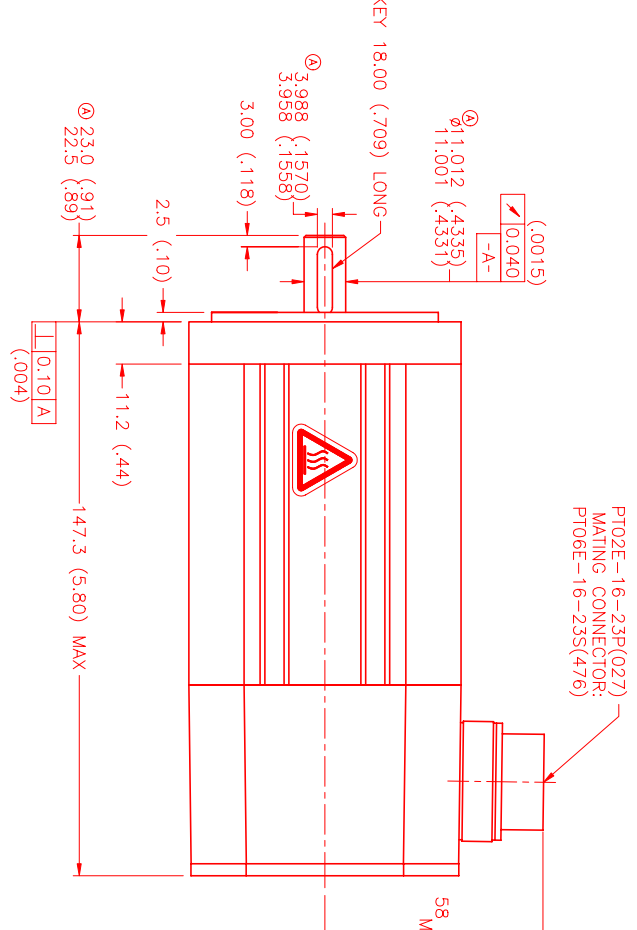
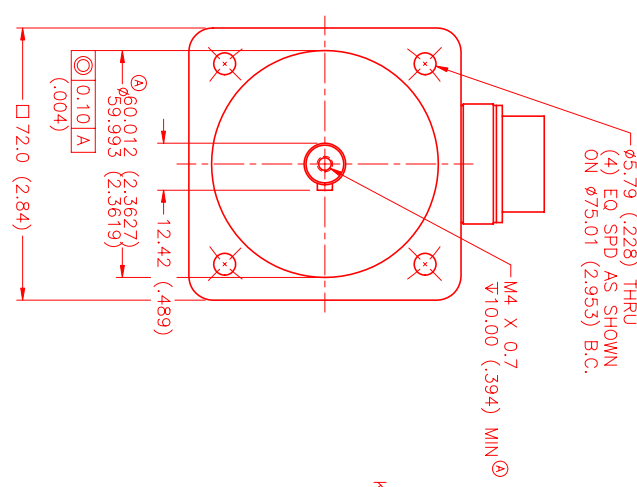
ENC/THERM WIRE LEADS	WIRE FUNCTION	WIRE COLOR
T	GROUND	BLACK
E	+5VDC	RED
F	CH A	BLUE
U	CH A'	BLUE/BLK
G	CH B	GREEN
V	CH B'	GRN/BLK
H	CH Z	YELLOW
W	CH Z'	YEL/BLK
J	CH U	BROWN
K	CH U'	BRN/BLK
X	CH V	GRAY
L	CH V'	GRAY/BLK
Y	CH W	WHITE
M	CH W'	WHT/BLK
N	GND/CABLE	SHLD
S	THERM	BLACK
R	THERM	BLACK
P	-	-
Z	-	-

MOTOR WIRE LEADS	WIRE FUNCTION	WIRE COLOR
A	ΦR	RED
B	ΦS	BLACK
C	ΦT	BLUE
D	PE GND	GRN/YEL



MOTOR ROTATION CCW (COUNTER CLOCKWISE)
*LOOKING AT THE FACE OF THE MOTOR

WAVE REPRESENTING STATOR OUTPUT
WAVE REPRESENTING HALL SENSOR



REV. A	DESCRIPTION PRELIMINARY	DATE 10/13/99	APP'D. MS
REVISIONS		DATE 2/14/00	APP'D. MVS
TITLE: "B" /TRAP /48VDC /MET /T1 /CONN MATERIAL: MPM722BTL7JM1N SCALE: 1:1			

NO. 1	PART NUMBER	DESCRIPTION	QTY.
UNLESS SPECIFIED			
DECIMAL ANGLES ± .005	MITS MTS Systems Corporation		
FRAC. ANGLES ± .002	Automation Division		
ANGLES ± 1/2°	RESISTIVE SPOTS OR BURRS ARE NOTED IN THE PERFORMANCE		
SPAWN: MS	OR WOUNDINGS TO OTHER PROVIDER AS NOTED IN OTHER COMP		
DATE: 6/10/99	CHECKED: MATERIAL		
APPROVED:	DRAWING NUMBER: MPM722BTL7JM1N		