

### MOTOR DATA @ 230 VAC (SINE)

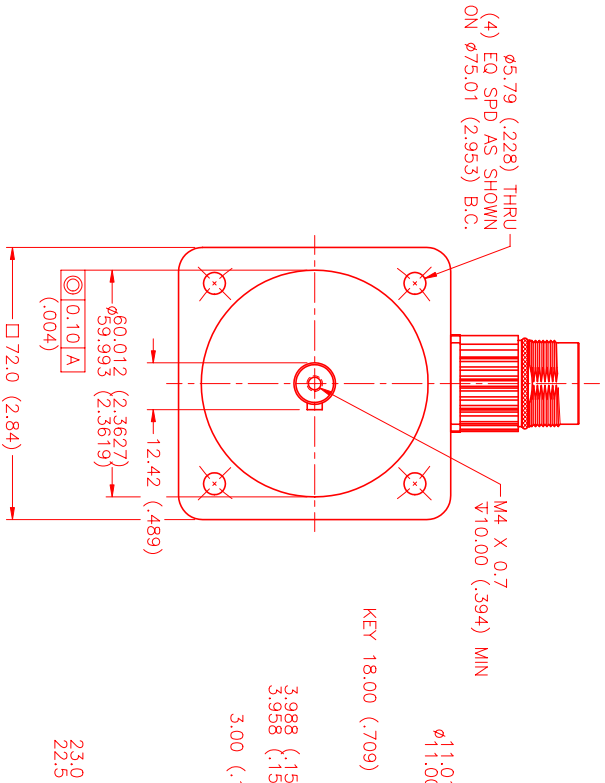
MOTOR PARAMETERS	UNITS	VALUE
HORSEPOWER	HP	0.79
KILOWATTS	KW	0.58
MAX. OPERATING SPEED	N. MAX RPM	4000
SPEED @ RATED TORQUE	N RATED RPM	3000
* CONTINUOUS RATED TORQUE @ 3000 RPM	IN-LBS[Nm]	16.6[1.88]
* CONTINUOUS STALL TORQUE	IN-LBS[Nm]	18.8[2.12]
CONTINUOUS LINE CURRENT	AMPS(RMS/Φ)	2.3
PEAK TORQUE	IN-LBS[Nm]	56.0[6.4]
PEAK CURRENT	AMPS(RMS/Φ)	6.9
MAX. THEORETICAL ACCEL.	RAD/SEC <sup>2</sup>	114,286
TORQUE SENSITIVITY	Kt IN-LBS/AMPER[Φ]/(Nm/AMPER[Φ])	8.2[0.93]
BACK EMF (LINE TO LINE)	Vrms/Krpm	51.8
D.C. RESISTANCE (P-P)	OHMS	5.5
INDUCANCE (P-P)	MILLIHENRIES	13.0
ROTOR INERTIA	Jm [IN-LBS-SEC <sup>2</sup> ] [Kg-M <sup>2</sup> ]	0.00049[0.000055]
STATIC FRICTION	Tf [IN-LBS] [Nm]	1.2[0.14]

\*25°C AMBIENT WITH A MAXIMUM CASE TEMPERATURE OF 85°C ON MOTOR. MOTOR MOUNTED ON A 1/2" X 1/2" X 1/2" ALUMINUM HEAT-SINK. THERMOSTAT IN STATOR WINDINGS WILL OPEN IF WINDING TEMPERATURE EXCEEDS 155°C. THIS ALLOWS FOR AN APPROXIMATE +10% HEADROOM IN THE CONTINUOUS TORQUE RATING BEFORE THERMOSTAT OPENS.

#### MECHANICAL NOTES:

- AXIAL LOAD: 20 LBS MAX
- RADIAL LOAD: 35 LBS MAX @ 1" FROM FACE
- MOTOR SEALED TO IP65.
- MOTOR WEIGHT: 6.0 LBS. [ 2.7 Kg]
- MOTOR FINISH: BLACK EPOXY
- MOTOR OUTPUT SHAFT: STAINLESS STEEL
- MILLIMETERS (INCHES)
- THIS MOTOR'S OUTPUT KEY IS A PRESS FIT.

ENCODER: (290-00157)  
OH35-2000P6-L6-5V



#### CONNECTION CHART

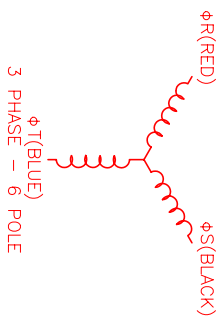
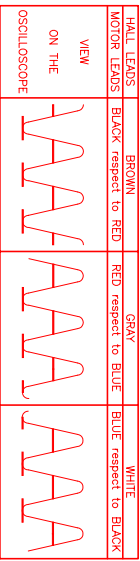
ENCODER CONNECTOR:  
② AEGA052NN000000200000  
(270-00257)

PIN	WIRE FUNCTION	WIRE COLOR
1	GND(OV)	BLACK
2	CH A (A)	BLUE/BLK
3	CH A(A)	BLUE
4	CH B(B)	GREEN
5	CH B(B)	GRN/BLK
6	CH Z(Z)	YELLOW
7	CH Z(Z)	YEL/BLK
8	+5V(+5V)	RED
9	-	-
10	CH V(BLG V)	BROWN
11	CH V(BLG V)	GRAY
12	CH W(BLG W)	WHITE

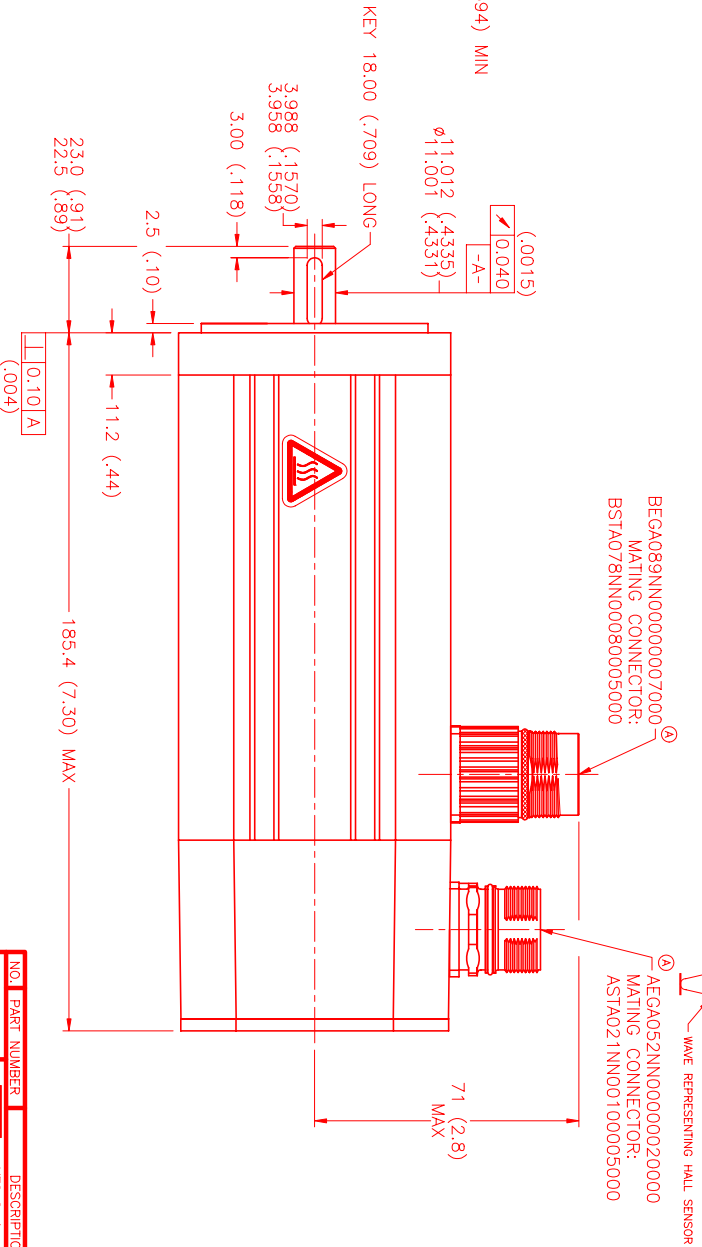
MOTOR/THERM CONNECTOR:  
② BEGA089NN0000007000  
(270-00256)

PIN	WIRE FUNCTION	WIRE COLOR
1	ΦR(U1)	RED
2	PE GND	GRN/YEL
3	ΦS(W1)	BLACK
4	ΦT(V1)	BLUE
A	-	-
B	-	-
C	THERM	BLACK
D	THERM	BLACK

#### MOTOR & HALL POSITION CHART



\*MOTOR ROTATION CCW (COUNTER CLOCKWISE)  
(LOOKING AT THE FACE OF THE MOTOR)



BEGA089NN0000007000  
MATING CONNECTOR:  
AST1A078NN0000005000

AEGA052NN000000200000  
MATING CONNECTOR:  
AST1A021NN00100005000

NO.	PART NUMBER	DESCRIPTION	QTY.
1	290-00157	ENCODER	1
2	BEGA089NN0000007000	MOTOR/THERM CONNECTOR	1
3	AEGA052NN000000200000	MATING CONNECTOR	1
4	AST1A078NN0000005000	MATING CONNECTOR	1
5	AST1A021NN00100005000	MATING CONNECTOR	1

REV.	DESCRIPTION	DATE	APPD.
A	PRELIMINARY	9/17/00	AJS
A	E.C.O. -	4/10/01	AJS

NO.	PART NUMBER	DESCRIPTION	QTY.
1	290-00157	ENCODER	1
2	BEGA089NN0000007000	MOTOR/THERM CONNECTOR	1
3	AEGA052NN000000200000	MATING CONNECTOR	1
4	AST1A078NN0000005000	MATING CONNECTOR	1
5	AST1A021NN00100005000	MATING CONNECTOR	1

NO.	PART NUMBER	DESCRIPTION	QTY.
1	290-00157	ENCODER	1
2	BEGA089NN0000007000	MOTOR/THERM CONNECTOR	1
3	AEGA052NN000000200000	MATING CONNECTOR	1
4	AST1A078NN0000005000	MATING CONNECTOR	1
5	AST1A021NN00100005000	MATING CONNECTOR	1

NO.	PART NUMBER	DESCRIPTION	QTY.
1	290-00157	ENCODER	1
2	BEGA089NN0000007000	MOTOR/THERM CONNECTOR	1
3	AEGA052NN000000200000	MATING CONNECTOR	1
4	AST1A078NN0000005000	MATING CONNECTOR	1
5	AST1A021NN00100005000	MATING CONNECTOR	1

NO.	PART NUMBER	DESCRIPTION	QTY.
1	290-00157	ENCODER	1
2	BEGA089NN0000007000	MOTOR/THERM CONNECTOR	1
3	AEGA052NN000000200000	MATING CONNECTOR	1
4	AST1A078NN0000005000	MATING CONNECTOR	1
5	AST1A021NN00100005000	MATING CONNECTOR	1

NO.	PART NUMBER	DESCRIPTION	QTY.
1	290-00157	ENCODER	1
2	BEGA089NN0000007000	MOTOR/THERM CONNECTOR	1
3	AEGA052NN000000200000	MATING CONNECTOR	1
4	AST1A078NN0000005000	MATING CONNECTOR	1
5	AST1A021NN00100005000	MATING CONNECTOR	1

NO.	PART NUMBER	DESCRIPTION	QTY.
1	290-00157	ENCODER	1
2	BEGA089NN0000007000	MOTOR/THERM CONNECTOR	1
3	AEGA052NN000000200000	MATING CONNECTOR	1
4	AST1A078NN0000005000	MATING CONNECTOR	1
5	AST1A021NN00100005000	MATING CONNECTOR	1

NO.	PART NUMBER	DESCRIPTION	QTY.
1	290-00157	ENCODER	1
2	BEGA089NN0000007000	MOTOR/THERM CONNECTOR	1
3	AEGA052NN000000200000	MATING CONNECTOR	1
4	AST1A078NN0000005000	MATING CONNECTOR	1
5	AST1A021NN00100005000	MATING CONNECTOR	1

NO.	PART NUMBER	DESCRIPTION	QTY.
1	290-00157	ENCODER	1
2	BEGA089NN0000007000	MOTOR/THERM CONNECTOR	1
3	AEGA052NN000000200000	MATING CONNECTOR	1
4	AST1A078NN0000005000	MATING CONNECTOR	1
5	AST1A021NN00100005000	MATING CONNECTOR	1

NO.	PART NUMBER	DESCRIPTION	QTY.
1	290-00157	ENCODER	1
2	BEGA089NN0000007000	MOTOR/THERM CONNECTOR	1
3	AEGA052NN000000200000	MATING CONNECTOR	1
4	AST1A078NN0000005000	MATING CONNECTOR	1
5	AST1A021NN00100005000	MATING CONNECTOR	1

NO.	PART NUMBER	DESCRIPTION	QTY.
1	290-00157	ENCODER	1
2	BEGA089NN0000007000	MOTOR/THERM CONNECTOR	1
3	AEGA052NN000000200000	MATING CONNECTOR	1
4	AST1A078NN0000005000	MATING CONNECTOR	1
5	AST1A021NN00100005000	MATING CONNECTOR	1

NO.	PART NUMBER	DESCRIPTION	QTY.
1	290-00157	ENCODER	1
2	BEGA089NN0000007000	MOTOR/THERM CONNECTOR	1
3	AEGA052NN000000200000	MATING CONNECTOR	1
4	AST1A078NN0000005000	MATING CONNECTOR	1
5	AST1A021NN00100005000	MATING CONNECTOR	1

NO.	PART NUMBER	DESCRIPTION	QTY.
1	290-00157	ENCODER	1
2	BEGA089NN0000007000	MOTOR/THERM CONNECTOR	1
3	AEGA052NN000000200000	MATING CONNECTOR	1
4	AST1A078NN0000005000	MATING CONNECTOR	1
5	AST1A021NN00100005000	MATING CONNECTOR	1

NO.	PART NUMBER	DESCRIPTION	QTY.
1	290-00157	ENCODER	1
2	BEGA089NN0000007000	MOTOR/THERM CONNECTOR	1
3	AEGA052NN000000200000	MATING CONNECTOR	1
4	AST1A078NN0000005000	MATING CONNECTOR	1
5	AST1A021NN00100005000	MATING CONNECTOR	1

NO.	PART NUMBER	DESCRIPTION	QTY.
1	290-00157	ENCODER	1
2	BEGA089NN0000007000	MOTOR/THERM CONNECTOR	1
3	AEGA052NN000000200000	MATING CONNECTOR	1
4	AST1A078NN0000005000	MATING CONNECTOR	1
5	AST1A021NN00100005000	MATING CONNECTOR	1

NO.	PART NUMBER	DESCRIPTION	QTY.
1	290-00157	ENCODER	1
2	BEGA089NN0000007000	MOTOR/THERM CONNECTOR	1
3	AEGA052NN000000200000	MATING CONNECTOR	1
4	AST1A078NN0000005000	MATING CONNECTOR	1
5	AST1A021NN00100005000	MATING CONNECTOR	1

NO.	PART NUMBER	DESCRIPTION	QTY.
1	290-00157	ENCODER	1
2	BEGA089NN0000007000	MOTOR/THERM CONNECTOR	1
3	AEGA052NN000000200000	MATING CONNECTOR	1
4	AST1A078NN0000005000	MATING CONNECTOR	1
5	AST1A021NN00100005000	MATING CONNECTOR	1

NO.	PART NUMBER	DESCRIPTION	QTY.
1	290-00157	ENCODER	1
2	BEGA089NN0000007000	MOTOR/THERM CONNECTOR	1
3	AEGA052NN000000200000	MATING CONNECTOR	1
4	AST1A078NN0000005000	MATING CONNECTOR	1
5	AST1A021NN00100005000	MATING CONNECTOR	1

NO.	PART NUMBER	DESCRIPTION	QTY.
1	290-00157	ENCODER	1
2	BEGA089NN0000007000	MOTOR/THERM CONNECTOR	1
3	AEGA052NN000000200000	MATING CONNECTOR	1
4	AST1A078NN0000005000	MATING CONNECTOR	1
5	AST1A021NN00100005000	MATING CONNECTOR	1

NO.	PART NUMBER	DESCRIPTION	QTY.
1	290-00157	ENCODER	1
2	BEGA089NN0000007000	MOTOR/THERM CONNECTOR	1
3	AEGA052NN000000200000	MATING CONNECTOR	1
4	AST1A078NN0000005000	MATING CONNECTOR	1
5	AST1A021NN00100005000	MATING CONNECTOR	1

NO.	PART NUMBER	DESCRIPTION	QTY.
1	290-00157	ENCODER	1
2	BEGA089NN0000007000	MOTOR/THERM CONNECTOR	1
3	AEGA052NN000000200000	MATING CONNECTOR	1
4	AST1A078NN0000005000	MATING CONNECTOR	1
5	AST1A021NN00100005000	MATING CONNECTOR	1

NO.	PART NUMBER	DESCRIPTION	QTY.
1	290-00157	ENCODER	1
2	BEGA089NN0000007000	MOTOR/THERM CONNECTOR	1
3	AEGA052NN000000200000	MATING CONNECTOR	1
4	AST1A078NN0000005000	MATING CONNECTOR	1
5	AST1A021NN00100005000	MATING CONNECTOR	1

NO.	PART NUMBER	DESCRIPTION	QTY.
1	290-00157	ENCODER	1
2	BEGA089NN0000007000	MOTOR/THERM CONNECTOR	1
3	AEGA052NN000000200000	MATING CONNECTOR	1
4	AST1A078NN0000005000	MATING CONNECTOR	1
5	AST1A021NN00100005000	MATING CONNECTOR	1

NO.	PART NUMBER	DESCRIPTION	QTY.
1	290-00157	ENCODER	1
2	BEGA089NN0000007000	MOTOR/THERM CONNECTOR	1
3	AEGA052NN000000200000	MATING CONNECTOR	1
4	AST1A078NN0000005000	MATING CONNECTOR	1
5	AST1A021NN00100005000	MATING CONNECTOR	1

NO.	PART NUMBER	DESCRIPTION	QTY.
1	290-00157	ENCODER	1
2	BEGA089NN0000007000	MOTOR/THERM CONNECTOR	1
3	AEGA052NN000000200000	MATING CONNECTOR	1
4	AST1A078NN0000005000	MATING CONNECTOR	1
5	AST1A021NN00100005000	MATING CONNECTOR	1

NO.	PART NUMBER	DESCRIPTION	QTY.
1	290-00157	ENCODER	1
2	BEGA089NN0000007000	MOTOR/THERM CONNECTOR	1
3	AEGA052NN000000200000	MATING CONNECTOR	1
4	AST1A078NN0000005000	MATING CONNECTOR	1
5	AST1A021NN00100005000	MATING CONNECTOR	1