

MOTOR DATA @ 230 VAC (SINE)

MOTOR PARAMETERS	UNITS	VALUE
HORSEPOWER	HP	0.82
KILOWATTS	KW RATED	0.62
MAX. OPERATING SPEED	N. MAX RPM	5000
SPEED @ RATED TORQUE	N RATED RPM	4000
* CONTINUOUS RATED TORQUE @ 4000 RPM	N-LBS[Nm]	13.0[1.47]
* CONTINUOUS STALL TORQUE	N-LBS[Nm]	16.0[1.81]
CONTINUOUS LINE CURRENT	AMPS(RMS/φ)	2.7
PEAK TORQUE	N-LBS[Nm]	58.8[6.64]
PEAK CURRENT	AMPS(RMS/φ)	9.9
MAX. THEORETICAL ACCEL.	RAD/SEC ²	76,863
TORQUE SENSITIVITY	Kt [N-LBS/AMP/RMS/φ]/Nm/AMP/RMS/φ	5.9[.67]
BACK EMF (LINE TO LINE)	Vrms/Krpm	37.6
D.C. RESISTANCE (P-P)	OHMS	3.9
INDUCTANCE (P-P)	MILLIHENRIES	10.4
ROTOR INERTIA W/BRAKE	Jm [N-LBS-SEC ²]/Kg-M ²	0.000765[0.0000861]
STATIC FRICTION	Tf [N-LBS]/[Nm]	0.4[0.05]

*25°C AMBIENT WITH A MAXIMUM CASE TEMPERATURE OF 100°C ON MOTOR. MOTOR MOUNTED ON A 10" X 10" X 1/4" ALUMINUM HEATSINK. THERMOSTAT IN STATOR WINDINGS WILL OPEN IF WINDING TEMPERATURE EXCEEDS 155°C. THIS ALLOWS FOR AN APPROXIMATE +10% HEADROOM IN THE CONTINUOUS TORQUE RATING BEFORE THERMOSTAT OPENS.

MECHANICAL NOTES:

- AXIAL LOAD: 25 LBS MAX
- RADIAL LOAD: 40 LBS MAX @ 1" FROM FACE
- MOTOR SEALED TO IP65.
- MOTOR WEIGHT: 10.0 LBS. [4.5 kg]
- MOTOR FINISH: BLACK EPOXY
- MOTOR OUTPUT SHAFT: STAINLESS STEEL
- INCHES (MILLIMETERS)

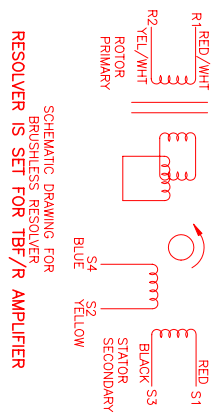
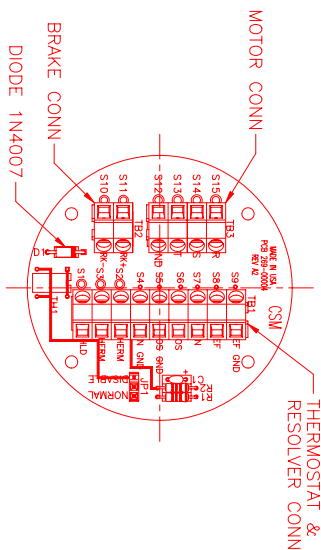
FAILSAFE BRAKE:

MIN HOLDING TORQUE: 60 IN-LBS
INPUT VOLTAGE: 24 VOLTS

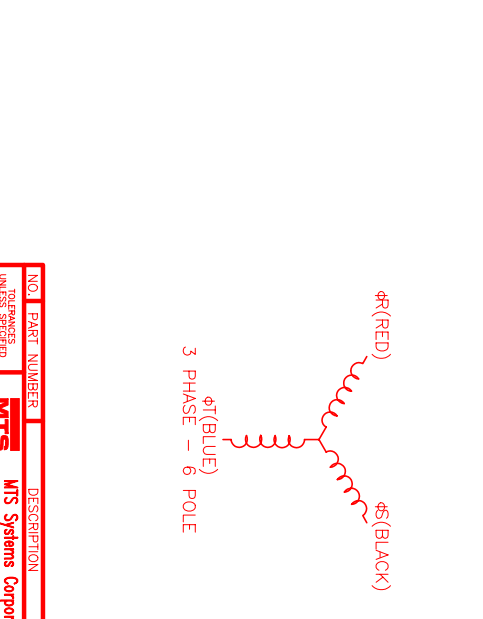
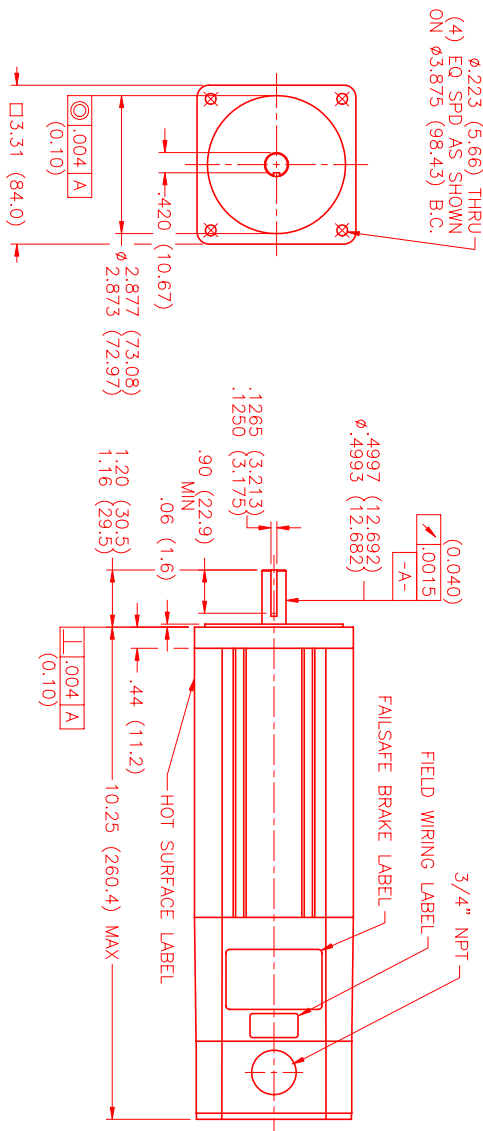
CONNECTION CHART

MOTOR/BRAKE WIRE	WIRE LEADS
TERMINAL FUNCTION	WIRE COLOR
S15	φS
S14	φS
S13	φT
S12	PE GND
S11	BRK (+)
S10	BRK (-)

RES/THERM WIRE	WIRE LEADS
TERMINAL FUNCTION	WIRE COLOR
S9	REF GND
S8	REF
S7	SIN
S6	COS
S5	COS GND
S4	SIN GND
S3	THERM
S2	THERM
S1	GND/SHLD



SCHEMATIC DRAWING FOR BRUSHLESS RESOLVER TBF/R AMPLIFIER



NO.	PART NUMBER	DESCRIPTION	QTY.
1	MPM891ASG6H3R	3 PHASE 230VAC 0.82HP 4000RPM	1

MTS Systems Corporation
 Automation Division
 11700 W. 11th Ave., Suite 100
 Westminster, CO 80040
 Phone: 303.440.0000
 Fax: 303.440.0001
 Email: sales@mtsautomation.com
 Website: www.mtsautomation.com

DATE: 11/2/01
 DRAWN: AJS
 CHECKED: MTS
 APPROVED: MPM891ASG6H3R
 SCALE: 1/2:1