

### MOTOR DATA @ 230 VAC (SINE)

MOTOR PARAMETERS	UNITS	VALUE
HORSEPOWER	HP	.35
KILOWATTS	KW RATED	.41
MAX. OPERATING SPEED	N MAX	3000
SPEED @ RATED TORQUE	N RATED	2400
* CONTINUOUS RATED TORQUE @ 2400 RPM	IN-LBS [Nm]	14.5 [1.64]
* CONTINUOUS STALL TORQUE	IN-LBS [Nm]	16.0 [1.81]
CONTINUOUS LINE CURRENT	AMPS (RMS/Φ)	1.3
PEAK TORQUE	IN-LBS [Nm]	58.8 [6.64]
PEAK CURRENT	AMPS (RMS/Φ)	4.9
MAX. THEORETICAL ACCEL.	RAD/SEC <sup>2</sup>	95.610
TORQUE SENSITIVITY	IN-LBS/AMP RMS/Φ [Nm/AMP RMS/Φ]	11.9 [1.4]
BACK EMF (LINE TO LINE)	Vrms/Krpm	75.2
D.C. RESISTANCE (P-P)	OHMS	15.6
INDUCTANCE (P-P)	MILLIHENRIES	39.6
ROTOR INERTIA	Jm [IN-LBS-SEC <sup>2</sup> ] [Kg-M <sup>2</sup> ]	.000615 [0.0000693]
STATIC FRICTION	Tf [IN-LBS] [Nm]	.4 [0.05]

\*25°C AMBIENT WITH A MAXIMUM CASE TEMPERATURE OF 100°C ON MOTOR. MOTOR MOUNTED ON A 10" X 10" X 10" X 1/4" ALUMINUM HEATSINK. THERMOSTAT IN STATOR WINDINGS WILL OPEN IF WINDING TEMPERATURE EXCEEDS 155°C. THIS ALLOWS FOR AN APPROXIMATE +10% HEADROOM IN THE CONTINUOUS TORQUE RATING BEFORE THERMOSTAT OPENS.

#### MECHANICAL NOTES:

- AXIAL LOAD: 25 LBS MAX
- RADIAL LOAD: 40 LBS MAX @ 1" FROM FACE
- MOTOR SEALED TO IP65.
- MOTOR WEIGHT: 6.6 LBS. [ 3.0 KJ]
- MOTOR FINISH: BLACK EPOXY
- MOTOR OUTPUT SHAFT: STAINLESS STEEL
- INCHES (MILLIMETERS)

#### ENCODER: (290-00084)

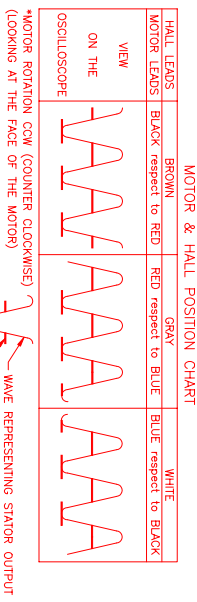
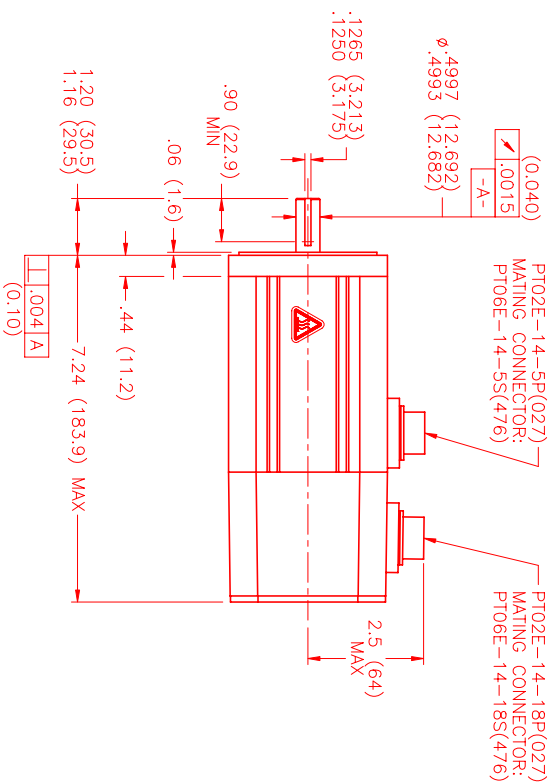
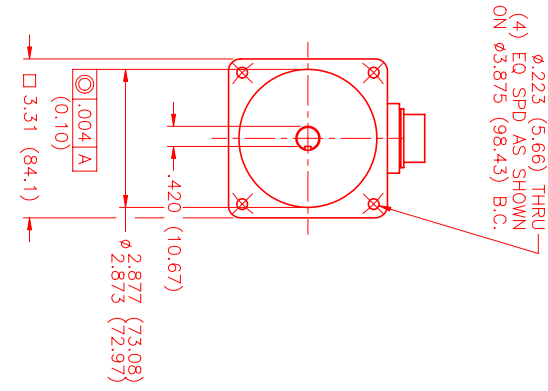
OH48-5000P6-L6-5V

#### CONNECTION CHART MOTOR CONNECTOR: PT02E-14-5P(027) (270-00026)

MOTOR	WIRE	WIRE LEADS
PIN	FUNCTION	WIRE COLOR
A	ΦR	RED
B	ΦS	BLACK
C	ΦT	BLUE
D	PE GND	GRN/YEL
E	-	-

#### ENCODER/THERM CONNECTOR: PT02E-14-18P(027) (270-00024)

ENC/THERM	WIRE	WIRE LEADS
PIN	FUNCTION	WIRE COLOR
T	GROUND	BLACK
K	+5VDC	RED
B	CH A	BLUE
C	CH A V	BLUE/BLK
N	CH B	GREEN
P	CH B V	GRN/BLK
M	CH Z	YELLOW
U	CH Z V	YEL/BLK
E	CH U	BROWN
R	CH U V	BRN/BLK
F	CH V	GRAY
S	CH V V	GRAY/BLK
G	CH W	WHITE
H	CH W V	WHT/BLK
D	GND/CABLE	SHLD
A	THERM	BLACK
L	THERM	BLACK
J	GND	GRN/YEL



MOTOR ROTATION (COUNTER CLOCKWISE)  
(LOOKING AT THE FACE OF THE MOTOR)



ΦR(RED)  
ΦS(BLACK)  
3 PHASE - 6 POLE

NO.	PART NUMBER	DESCRIPTION	QTY.
1	MPM891BSC6JQ1N	MTS Automation Division	1

APPLIED GRINDING