

MOTOR DATA @ 230 VAC (TRAP)

MOTOR PARAMETERS	UNITS	VALUE
HORSEPOWER	HP	0.35
KILOWATTS	KW	0.41
MAX. OPERATING SPEED	N. MAX RPM	3000
SPEED @ RATED TORQUE	N RATED RPM	2400
* CONTINUOUS RATED TORQUE @ 2400 RPM	IN-LBS[Nm]	14.5[1.64]
* CONTINUOUS STALL TORQUE	IN-LBS[Nm]	16.0[1.81]
CONTINUOUS LINE CURRENT	AMPS	1.9
PEAK TORQUE	IN-LBS[Nm]	58.8[6.64]
PEAK CURRENT	AMPS	7.0
MAX. THEORETICAL ACCEL. TORQUE SENSITIVITY	RAD/SEC ²	95.610
BACK EMF (LINE TO LINE)	Vrms/Krpm	8.4[0.96]
D.C. RESISTANCE (P-P)	OHMS	75.2
INDUCTANCE (P-P)	MILLIHENRIES	15.4
ROTOR INERTIA	Jm	39.6
STATIC FRICTION	IN-LBS-SEC ² [Kg-M ²]	.0006151[.0000693]
	IN-LBS[Nm]	.4[.05]

*25°C AMBIENT WITH A MAXIMUM CASE TEMPERATURE OF 100°C ON MOTOR. MOTOR MOUNTED ON A 10" X 10" X 1/4" ALUMINUM HEATSINK. THERMOSTAT IN STATOR WINDINGS WILL OPEN IF WINDING TEMPERATURE EXCEEDS 155°C. THIS ALLOWS FOR AN APPROXIMATE +10% HEADROOM IN THE CONTINUOUS TORQUE RATING BEFORE THERMOSTAT OPENS.

MECHANICAL NOTES:

1. AXIAL LOAD: 25 LBS MAX
2. RADIAL LOAD: 40 LBS MAX @ 1" FROM FACE
3. MOTOR SEALED TO IP65.
4. MOTOR WEIGHT: 6.6 LBS. [3.0 Kg]
5. MOTOR FINISH: BLACK EPOXY
6. MOTOR OUTPUT SHAFT: STAINLESS STEEL
7. INCHES (MILLIMETERS)

ENCODER: (290-00052)

OH48-2000P6-L6-SV

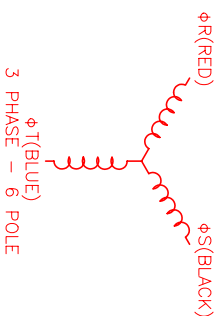
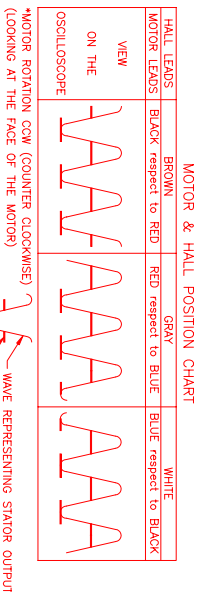
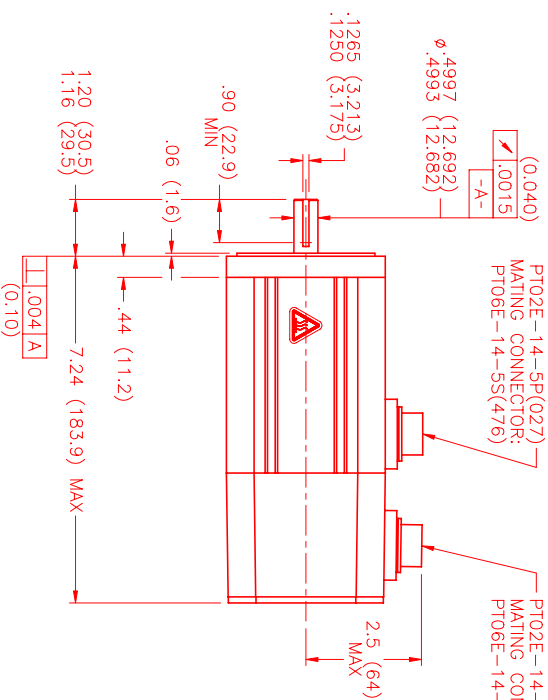
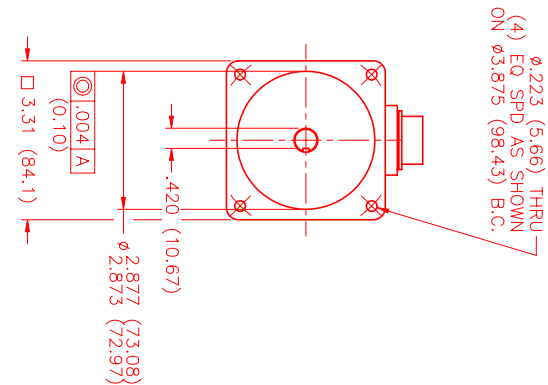
CONNECTION CHART

MOTOR CONNECTOR:
PT02E-14-5P(027)
(270-00026)

MOTOR WIRE LEADS	WIRE FUNCTION	WIRE COLOR
A	ΦR	RED
B	ΦS	BLACK
C	ΦT	BLUE
D	PE GND	GRN/YEL
E	-	-

ENCODER/THERM CONNECTOR:
PT02E-14-18P(027)
(270-00024)

END/THERM WIRE LEADS	PIN	WIRE FUNCTION	WIRE COLOR
	T	GND	BLACK
	K	+5VDC	RED
	B	CH A	BLUE
	C	CH A\	BLUE/BLK
	N	CH B	GREEN
	P	CH B\	GRN/BLK
	M	CH Z	YELLOW
	U	CH Z\	YEL/BLK
	E	CH U	BROWN
	R	CH U\	BRN/BLK
	F	CH V	GRAY
	S	CH V\	GRAY/BLK
	G	CH W	WHITE
	H	CH W\	WHT/BLK
	D	GND/COABLE	SHLD
	A	THERM	BLACK
	L	THERM	BLACK
	J	GND	GRN/YEL



NO.	PART NUMBER	DESCRIPTION	QTY.
1	290-00052	Encoder	1
2	OH48-2000P6-L6-SV	Encoder	1
3	PT02E-14-5P(027)	Motor Connector	1
4	PT02E-14-18P(027)	Encoder Connector	1

REV.	DESCRIPTION	DATE	APP.
PRELIMINARY		7/29/99	MVS

NO.	PART NUMBER	DESCRIPTION	QTY.
1	290-00052	Encoder	1
2	OH48-2000P6-L6-SV	Encoder	1
3	PT02E-14-5P(027)	Motor Connector	1
4	PT02E-14-18P(027)	Encoder Connector	1

REV.	DESCRIPTION	DATE	APP.
PRELIMINARY		7/29/99	MVS

NO.	PART NUMBER	DESCRIPTION	QTY.
1	290-00052	Encoder	1
2	OH48-2000P6-L6-SV	Encoder	1
3	PT02E-14-5P(027)	Motor Connector	1
4	PT02E-14-18P(027)	Encoder Connector	1

REV.	DESCRIPTION	DATE	APP.
PRELIMINARY		7/29/99	MVS

NO.	PART NUMBER	DESCRIPTION	QTY.
1	290-00052	Encoder	1
2	OH48-2000P6-L6-SV	Encoder	1
3	PT02E-14-5P(027)	Motor Connector	1
4	PT02E-14-18P(027)	Encoder Connector	1

REV.	DESCRIPTION	DATE	APP.
PRELIMINARY		7/29/99	MVS

NO.	PART NUMBER	DESCRIPTION	QTY.
1	290-00052	Encoder	1
2	OH48-2000P6-L6-SV	Encoder	1
3	PT02E-14-5P(027)	Motor Connector	1
4	PT02E-14-18P(027)	Encoder Connector	1

REV.	DESCRIPTION	DATE	APP.
PRELIMINARY		7/29/99	MVS

NO.	PART NUMBER	DESCRIPTION	QTY.
1	290-00052	Encoder	1
2	OH48-2000P6-L6-SV	Encoder	1
3	PT02E-14-5P(027)	Motor Connector	1
4	PT02E-14-18P(027)	Encoder Connector	1

REV.	DESCRIPTION	DATE	APP.
PRELIMINARY		7/29/99	MVS

NO.	PART NUMBER	DESCRIPTION	QTY.
1	290-00052	Encoder	1
2	OH48-2000P6-L6-SV	Encoder	1
3	PT02E-14-5P(027)	Motor Connector	1
4	PT02E-14-18P(027)	Encoder Connector	1

REV.	DESCRIPTION	DATE	APP.
PRELIMINARY		7/29/99	MVS

NO.	PART NUMBER	DESCRIPTION	QTY.
1	290-00052	Encoder	1
2	OH48-2000P6-L6-SV	Encoder	1
3	PT02E-14-5P(027)	Motor Connector	1
4	PT02E-14-18P(027)	Encoder Connector	1

REV.	DESCRIPTION	DATE	APP.
PRELIMINARY		7/29/99	MVS

NO.	PART NUMBER	DESCRIPTION	QTY.
1	290-00052	Encoder	1
2	OH48-2000P6-L6-SV	Encoder	1
3	PT02E-14-5P(027)	Motor Connector	1
4	PT02E-14-18P(027)	Encoder Connector	1

REV.	DESCRIPTION	DATE	APP.
PRELIMINARY		7/29/99	MVS

NO.	PART NUMBER	DESCRIPTION	QTY.
1	290-00052	Encoder	1
2	OH48-2000P6-L6-SV	Encoder	1
3	PT02E-14-5P(027)	Motor Connector	1
4	PT02E-14-18P(027)	Encoder Connector	1

REV.	DESCRIPTION	DATE	APP.
PRELIMINARY		7/29/99	MVS

NO.	PART NUMBER	DESCRIPTION	QTY.
1	290-00052	Encoder	1
2	OH48-2000P6-L6-SV	Encoder	1
3	PT02E-14-5P(027)	Motor Connector	1
4	PT02E-14-18P(027)	Encoder Connector	1

REV.	DESCRIPTION	DATE	APP.
PRELIMINARY		7/29/99	MVS

NO.	PART NUMBER	DESCRIPTION	QTY.
1	290-00052	Encoder	1
2	OH48-2000P6-L6-SV	Encoder	1
3	PT02E-14-5P(027)	Motor Connector	1
4	PT02E-14-18P(027)	Encoder Connector	1

REV.	DESCRIPTION	DATE	APP.
PRELIMINARY		7/29/99	MVS

NO.	PART NUMBER	DESCRIPTION	QTY.
1	290-00052	Encoder	1
2	OH48-2000P6-L6-SV	Encoder	1
3	PT02E-14-5P(027)	Motor Connector	1
4	PT02E-14-18P(027)	Encoder Connector	1

REV.	DESCRIPTION	DATE	APP.
PRELIMINARY		7/29/99	MVS

NO.	PART NUMBER	DESCRIPTION	QTY.
1	290-00052	Encoder	1
2	OH48-2000P6-L6-SV	Encoder	1
3	PT02E-14-5P(027)	Motor Connector	1
4	PT02E-14-18P(027)	Encoder Connector	1

REV.	DESCRIPTION	DATE	APP.
PRELIMINARY		7/29/99	MVS

NO.	PART NUMBER	DESCRIPTION	QTY.
1	290-00052	Encoder	1
2	OH48-2000P6-L6-SV	Encoder	1
3	PT02E-14-5P(027)	Motor Connector	1
4	PT02E-14-18P(027)	Encoder Connector	1

REV.	DESCRIPTION	DATE	APP.
PRELIMINARY		7/29/99	MVS

NO.	PART NUMBER	DESCRIPTION	QTY.
1	290-00052	Encoder	1
2	OH48-2000P6-L6-SV	Encoder	1
3	PT02E-14-5P(027)	Motor Connector	1
4	PT02E-14-18P(027)	Encoder Connector	1

REV.	DESCRIPTION	DATE	APP.
PRELIMINARY		7/29/99	MVS

NO.	PART NUMBER	DESCRIPTION	QTY.
1	290-00052	Encoder	1
2	OH48-2000P6-L6-SV	Encoder	1
3	PT02E-14-5P(027)	Motor Connector	1
4	PT02E-14-18P(027)	Encoder Connector	1

REV.	DESCRIPTION	DATE	APP.
PRELIMINARY		7/29/99	MVS

NO.	PART NUMBER	DESCRIPTION	QTY.
1	290-00052	Encoder	1
2	OH48-2000P6-L6-SV	Encoder	1
3	PT02E-14-5P(027)	Motor Connector	1
4	PT02E-14-18P(027)	Encoder Connector	1

REV.	DESCRIPTION	DATE	APP.
PRELIMINARY		7/29/99	MVS

NO.	PART NUMBER	DESCRIPTION	QTY.
1	290-00052	Encoder	1
2	OH48-2000P6-L6-SV	Encoder	1
3	PT02E-14-5P(027)	Motor Connector	1
4	PT02E-14-18P(027)	Encoder Connector	1

REV.	DESCRIPTION	DATE	APP.
PRELIMINARY		7/29/99	MVS

NO.	PART NUMBER	DESCRIPTION	QTY.
1	290-00052	Encoder	1
2	OH48-2000P6-L6-SV	Encoder	1
3	PT02E-14-5P(027)	Motor Connector	1
4	PT02E-14-18P(027)	Encoder Connector	1

REV.	DESCRIPTION	DATE	APP.
PRELIMINARY		7/29/99	MVS

NO.	PART NUMBER	DESCRIPTION	QTY.
1	290-00052	Encoder	1
2	OH48-2000P6-L6-SV	Encoder	1
3	PT02E-14-5P(027)	Motor Connector	1
4	PT02E-14-18P(027)	Encoder Connector	1

REV.	DESCRIPTION	DATE	APP.
PRELIMINARY		7/29/99	MVS

NO.	PART NUMBER	DESCRIPTION	QTY.
1	290-00052	Encoder	1
2	OH48-2000P6-L6-SV	Encoder	1
3	PT02E-14-5P(027)	Motor Connector	1
4	PT02E-14-18P(027)	Encoder Connector	1

REV.	DESCRIPTION	DATE	APP.
PRELIMINARY		7/29/99	MVS

NO.	PART NUMBER	DESCRIPTION	QTY.
1	290-00052	Encoder	1
2	OH48		