

MOTOR DATA @ 460 VAC (TRAP)

MOTOR PARAMETERS	UNITS	VALUE
HORSEPOWER	HP	1.66
KILOWATTS	KW	1.24
MAX. OPERATING SPEED	N. MAX RPM	5000
SPEED @ RATED TORQUE	RPM	4000
* CONTINUOUS RATED TORQUE @ 4000 RPM	IN-LBS [Nm]	26.0 [2.9]
* CONTINUOUS STALL TORQUE	IN-LBS [Nm]	30.0 [3.4]
CONTINUOUS LINE CURRENT	AMPS	3.6
PEAK TORQUE	IN-LBS [Nm]	90.0 [10.2]
PEAK CURRENT	AMPS	10.8
MAX. THEORETICAL ACCEL.	RAD/SEC ²	90.817
TORQUE SENSITIVITY	Kt IN-LBS/AMPI Nm/AMPI	8.34 [0.94]
BACK EMF (LINE TO LINE)	±10% Vrms/Krpm	74.2
D.C. RESISTANCE (P-P)	±10% OHMS	5.52
INDUCTANCE (P-P)	±10% MILLIHENRIES	17.4
ROTOR INERTIA	Jm [IN-LBS-SEC ²] [Kg-M ²]	0.000991 [0.000116]
STATIC FRICTION	Tf [IN-LBS] [Nm]	0.5 [0.06]

*25°C AMBIENT WITH A MAXIMUM CASE TEMPERATURE OF 100°C ON MOTOR. MOTOR MOUNTED ON A 10" X 10" X 1/4" ALUMINUM HEATSINK. THERMOSTAT IN STATOR WINDINGS WILL OPEN IF WINDING TEMPERATURE EXCEEDS 155°C. THIS ALLOWS FOR AN APPROXIMATE +10% HEADROOM IN THE CONTINUOUS TORQUE RATING BEFORE THERMOSTAT OPENS.

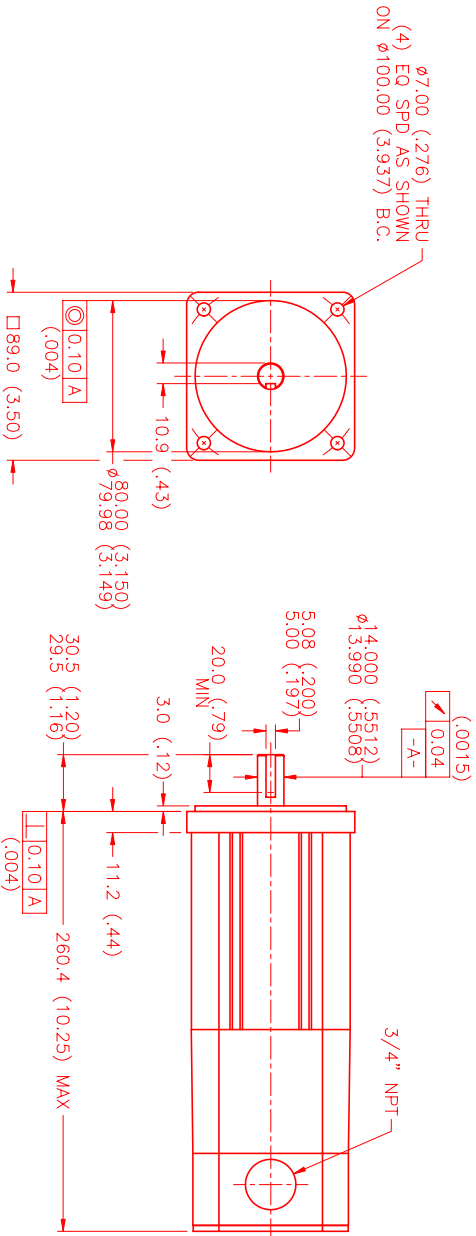
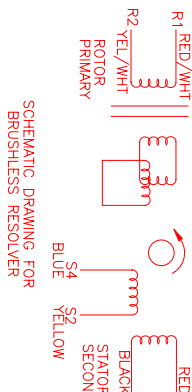
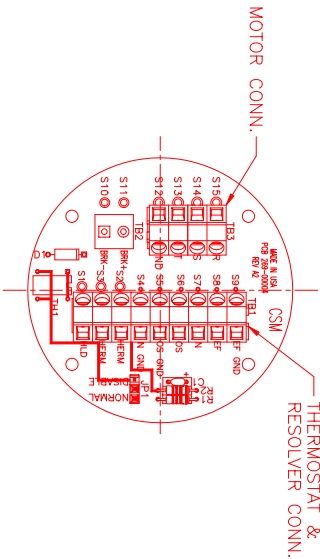
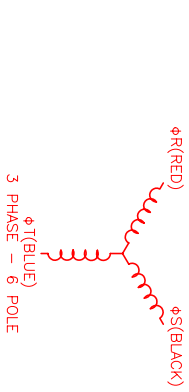
MECHANICAL NOTES:

1. AXIAL LOAD: 25 LBS MAX
2. RADIAL LOAD: 40 LBS MAX @ 1" FROM FACE
3. MOTOR SEALED TO IP65.
4. MOTOR WEIGHT: 10.4 LBS. [4.7 kg]
5. MOTOR FINISH: BLACK EPOXY
6. MOTOR OUTPUT SHAFT: STAINLESS STEEL
7. MILLIMETERS (INCHES)

CONNECTION CHART

MOTOR WIRE LEADS	WIRE COLOR
S15	ΦR RED
S14	ΦS BLUE
S13	ΦT YELLOW
S12	PE GND GRN/YEL

RES/THERM WIRE LEADS	WIRE FUNCTION	WIRE COLOR
S9	REF. GND	YEL/WHI
S8	REF.	RED/WHI
S7	SIN	YELLOW
S6	COS	RED
S5	COS GND	BLACK
S4	SIN GND	BLUE
S3	THERM	BLACK
S2	THERM	BLACK
S1	RES SHLD	GRN/YEL



TITLE: °C/TRAP /460 /MET/RES/NPT DRAWING NUMBER: MPM892CTJ7G3N SCALE: 1/2:1	
REVISIONS REV. DESCRIPTION DATE APPD. PRELIMINARY 5/25/99 ELS	
NO. PART NUMBER DESCRIPTION QTY. UNLESS SPECIFIED	MTS Systems Corporation Automation Division 10000 WOODBURN BLVD WOODBURN, NJ 07095 PHONE: 908-261-1100 FAX: 908-261-1101 E-MAIL: MTS@MTS.COM WWW: WWW.MTS.COM
DRAWN: MS DATE: 2/11/99 CHECKED:	TITLE: °C/TRAP /460 /MET/RES/NPT MATERIAL:
APPROVED:	DRAWING NUMBER: MPM892CTJ7G3N SCALE: 1/2:1