

MOTOR DATA @ 230 VAC (TRAP)

MOTOR PARAMETERS	UNITS	VALUE
HORSEPOWER	HP	1.96
KILOWATTS	KW	1.46
MAX. OPERATING SPEED	N. MAX RPM	4100
SPEED @ RATED TORQUE	RPM	3600
* CONTINUOUS RATED TORQUE @ 3600 RPM	IN-LBS[Nm]	34.4[3.8]
* CONTINUOUS STALL TORQUE	IN-LBS[Nm]	39.0[4.4]
CONTINUOUS LINE CURRENT	AMPS	6.3
PEAK TORQUE	IN-LBS[Nm]	137.0[15.5]
PEAK CURRENT	AMPS	23.1
MAX. THEORETICAL ACCEL.	RAD/SEC ²	100,000
TORQUE SENSITIVITY	K τ [IN-LBS/AMP][Nm/AMP]	6.2[0.7]
BACK EMF (LINE TO LINE)	$\pm 10\%$ Vrms/Krpm	55.0
D.C. RESISTANCE (P-P)	$\pm 10\%$ OHMS	1.9
INDUCTANCE (P-P)	$\pm 10\%$ MILLIHENRIES	7.5
ROTOR INERTIA	Jm[IN-LBS-SEC ²][Kg-M ²]	.00137[.000154]
STATIC FRICTION	Tf[IN-LBS[Nm]]	0.6[0.07]

*25°C AMBIENT WITH A MAXIMUM CASE TEMPERATURE OF 100°C ON MOTOR. MOTOR MOUNTED ON A 10" X 10" X 10" X 1/4" ALUMINUM HEATSINK. THERMOSTAT IN STATOR WINDINGS WILL OPEN IF WINDING TEMPERATURE EXCEEDS 155°C. THIS ALLOWS FOR AN APPROXIMATE +10% HEADROOM IN THE CONTINUOUS TORQUE RATING BEFORE THERMOSTAT OPENS.

MECHANICAL NOTES:

- AXIAL LOAD: 25 LBS MAX
- RADIAL LOAD: 40 LBS MAX @ 1" FROM FACE
- MOTOR SEALED TO IP65.
- MOTOR WEIGHT: 12.2 LBS. [5.5 Kg]
- MOTOR FINISH: BLACK EPOXY
- MOTOR OUTPUT SHAFT: STAINLESS STEEL
- INCHES (MILLIMETERS)

ENCODER: (290-00107)

OH48-409656-L6-5V

CONNECTION CHART

MOTOR CONNECTOR:
PT02E-14-5P(027)
(270-00026)

PIN	WIRE FUNCTION	WIRE COLOR
A	ΦR	RED
B	ΦS	BLACK
C	ΦT	BLUE
D	PE GND	GRN/YEL.
E	-	-

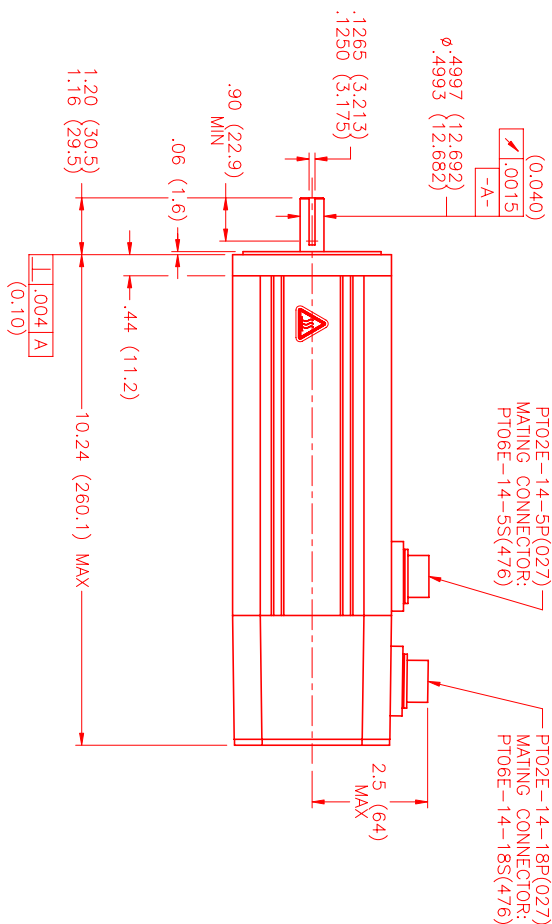
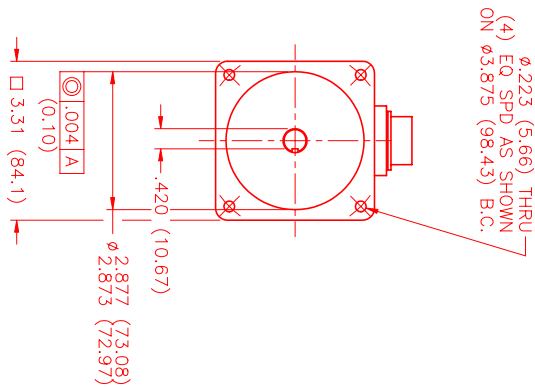
ENCODER/THERM CONNECTOR:
PT02E-14-18P(027)
(270-00024)

PIN	WIRE FUNCTION	WIRE COLOR
T	GROUND	BLACK
K	+5VDC	RED
B	CH A	BLUE
C	CH A	BLUE/BLK
N	CH B	GREEN
P	CH B	GRN/BLK
M	CH Z	YELLOW
U	CH Z	YEL/BLK
E	CH U	BROWN
R	CH U	BRN/BLK
F	CH V	GRAY
S	CH V	GRAY/BLK
G	CH W	WHITE
H	CH W	WHT/BLK
D	GND/CABLE	SHLD
A	THERM	BLACK
L	THERM	BLACK
J	GND	GRN/YEL

MOTOR & HALL POSITION CHART

HALL LEADS	BROWN	GRAY	WHITE
MOTOR LEADS	BLACK respect to RED	RED respect to BLUE	BLUE respect to BLACK

*MOTOR ROTATION CCW (COUNTER CLOCKWISE)
(LOOKING AT THE FACE OF THE MOTOR)



PT02E-14-5P(027)
MATING CONNECTOR:
PT06E-14-5S(476)

PT02E-14-18P(027)
MATING CONNECTOR:
PT06E-14-18S(476)



3 PHASE - 6 POLE

NO.	PART NUMBER	DESCRIPTION	QTY.
1	PT02E-14-5P(027)	MATING CONNECTOR	1
2	PT02E-14-18P(027)	MATING CONNECTOR	1
3	PT06E-14-5S(476)	MATING CONNECTOR	1
4	PT06E-14-18S(476)	MATING CONNECTOR	1
5	MPM893ATG6JZ1N	MOTOR	1

REV.	DESCRIPTION	DATE	APP.
PRELIMINARY		9/15/00	LIN

NO.	PART NUMBER	DESCRIPTION	QTY.
1	PT02E-14-5P(027)	MATING CONNECTOR	1
2	PT02E-14-18P(027)	MATING CONNECTOR	1
3	PT06E-14-5S(476)	MATING CONNECTOR	1
4	PT06E-14-18S(476)	MATING CONNECTOR	1
5	MPM893ATG6JZ1N	MOTOR	1

REV.	DESCRIPTION	DATE	APP.
PRELIMINARY		9/15/00	LIN

NO.	PART NUMBER	DESCRIPTION	QTY.
1	PT02E-14-5P(027)	MATING CONNECTOR	1
2	PT02E-14-18P(027)	MATING CONNECTOR	1
3	PT06E-14-5S(476)	MATING CONNECTOR	1
4	PT06E-14-18S(476)	MATING CONNECTOR	1
5	MPM893ATG6JZ1N	MOTOR	1

REV.	DESCRIPTION	DATE	APP.
PRELIMINARY		9/15/00	LIN

NO.	PART NUMBER	DESCRIPTION	QTY.
1	PT02E-14-5P(027)	MATING CONNECTOR	1
2	PT02E-14-18P(027)	MATING CONNECTOR	1
3	PT06E-14-5S(476)	MATING CONNECTOR	1
4	PT06E-14-18S(476)	MATING CONNECTOR	1
5	MPM893ATG6JZ1N	MOTOR	1

REV.	DESCRIPTION	DATE	APP.
PRELIMINARY		9/15/00	LIN

NO.	PART NUMBER	DESCRIPTION	QTY.
1	PT02E-14-5P(027)	MATING CONNECTOR	1
2	PT02E-14-18P(027)	MATING CONNECTOR	1
3	PT06E-14-5S(476)	MATING CONNECTOR	1
4	PT06E-14-18S(476)	MATING CONNECTOR	1
5	MPM893ATG6JZ1N	MOTOR	1

REV.	DESCRIPTION	DATE	APP.
PRELIMINARY		9/15/00	LIN

NO.	PART NUMBER	DESCRIPTION	QTY.
1	PT02E-14-5P(027)	MATING CONNECTOR	1
2	PT02E-14-18P(027)	MATING CONNECTOR	1
3	PT06E-14-5S(476)	MATING CONNECTOR	1
4	PT06E-14-18S(476)	MATING CONNECTOR	1
5	MPM893ATG6JZ1N	MOTOR	1

REV.	DESCRIPTION	DATE	APP.
PRELIMINARY		9/15/00	LIN

NO.	PART NUMBER	DESCRIPTION	QTY.
1	PT02E-14-5P(027)	MATING CONNECTOR	1
2	PT02E-14-18P(027)	MATING CONNECTOR	1
3	PT06E-14-5S(476)	MATING CONNECTOR	1
4	PT06E-14-18S(476)	MATING CONNECTOR	1
5	MPM893ATG6JZ1N	MOTOR	1

REV.	DESCRIPTION	DATE	APP.
PRELIMINARY		9/15/00	LIN

NO.	PART NUMBER	DESCRIPTION	QTY.
1	PT02E-14-5P(027)	MATING CONNECTOR	1
2	PT02E-14-18P(027)	MATING CONNECTOR	1
3	PT06E-14-5S(476)	MATING CONNECTOR	1
4	PT06E-14-18S(476)	MATING CONNECTOR	1
5	MPM893ATG6JZ1N	MOTOR	1

REV.	DESCRIPTION	DATE	APP.
PRELIMINARY		9/15/00	LIN

NO.	PART NUMBER	DESCRIPTION	QTY.
1	PT02E-14-5P(027)	MATING CONNECTOR	1
2	PT02E-14-18P(027)	MATING CONNECTOR	1
3	PT06E-14-5S(476)	MATING CONNECTOR	1
4	PT06E-14-18S(476)	MATING CONNECTOR	1
5	MPM893ATG6JZ1N	MOTOR	1

REV.	DESCRIPTION	DATE	APP.
PRELIMINARY		9/15/00	LIN

NO.	PART NUMBER	DESCRIPTION	QTY.
1	PT02E-14-5P(027)	MATING CONNECTOR	1
2	PT02E-14-18P(027)	MATING CONNECTOR	1
3	PT06E-14-5S(476)	MATING CONNECTOR	1
4	PT06E-14-18S(476)	MATING CONNECTOR	1
5	MPM893ATG6JZ1N	MOTOR	1

REV.	DESCRIPTION	DATE	APP.
PRELIMINARY		9/15/00	LIN

NO.	PART NUMBER	DESCRIPTION	QTY.
1	PT02E-14-5P(027)	MATING CONNECTOR	1
2	PT02E-14-18P(027)	MATING CONNECTOR	1
3	PT06E-14-5S(476)	MATING CONNECTOR	1
4	PT06E-14-18S(476)	MATING CONNECTOR	1
5	MPM893ATG6JZ1N	MOTOR	1

REV.	DESCRIPTION	DATE	APP.
PRELIMINARY		9/15/00	LIN

NO.	PART NUMBER	DESCRIPTION	QTY.
1	PT02E-14-5P(027)	MATING CONNECTOR	1
2	PT02E-14-18P(027)	MATING CONNECTOR	1
3	PT06E-14-5S(476)	MATING CONNECTOR	1
4	PT06E-14-18S(476)	MATING CONNECTOR	1
5	MPM893ATG6JZ1N	MOTOR	1

REV.	DESCRIPTION	DATE	APP.
PRELIMINARY		9/15/00	LIN

NO.	PART NUMBER	DESCRIPTION	QTY.
1	PT02E-14-5P(027)	MATING CONNECTOR	1
2	PT02E-14-18P(027)	MATING CONNECTOR	1
3	PT06E-14-5S(476)	MATING CONNECTOR	1
4	PT06E-14-18S(476)	MATING CONNECTOR	1
5	MPM893ATG6JZ1N	MOTOR	1

REV.	DESCRIPTION	DATE	APP.
PRELIMINARY		9/15/00	LIN

NO.	PART NUMBER	DESCRIPTION	QTY.
1	PT02E-14-5P(027)	MATING CONNECTOR	1
2	PT02E-14-18P(027)	MATING CONNECTOR	1
3	PT06E-14-5S(476)	MATING CONNECTOR	1
4	PT06E-14-18S(476)	MATING CONNECTOR	1
5	MPM893ATG6JZ1N	MOTOR	1

REV.	DESCRIPTION	DATE	APP.
PRELIMINARY		9/15/00	LIN

NO.	PART NUMBER	DESCRIPTION	QTY.
1	PT02E-14-5P(027)	MATING CONNECTOR	1
2	PT02E-14-18P(027)	MATING CONNECTOR	1
3	PT06E-14-5S(476)	MATING CONNECTOR	1
4	PT06E-14-18S(476)	MATING CONNECTOR	1
5	MPM893ATG6JZ1N	MOTOR	1

REV.	DESCRIPTION	DATE	APP.
PRELIMINARY		9/15/00	LIN

NO.	PART NUMBER	DESCRIPTION	QTY.
1	PT02E-14-5P(027)	MATING CONNECTOR	1
2	PT02E-14-18P(027)	MATING CONNECTOR	1
3	PT06E-14-5S(476)	MATING CONNECTOR	1
4	PT06E-14-18S(476)	MATING CONNECTOR	1
5	MPM893ATG6JZ1N	MOTOR	1

REV.	DESCRIPTION	DATE	APP.
PRELIMINARY		9/15/00	LIN

NO.	PART NUMBER	DESCRIPTION	QTY.
1	PT02E-14-5P(027)	MATING CONNECTOR	1
2	PT02E-14-18P(027)	MATING CONNECTOR	1
3	PT06E-14-5S(476)	MATING CONNECTOR	1
4	PT06E-14-18S(476)	MATING CONNECTOR	1
5	MPM893ATG6JZ1N	MOTOR	1

REV.	DESCRIPTION	DATE	APP.
PRELIMINARY		9/15/00	LIN

NO.	PART NUMBER	DESCRIPTION	QTY.
1	PT02E-14-5P(027)	MATING CONNECTOR	1
2	PT02E-14-18P(027)	MATING CONNECTOR	1
3	PT06E-14-5S(476)	MATING CONNECTOR	1
4	PT06E-14-18S(476)	MATING CONNECTOR	1
5	MPM893ATG6JZ1N	MOTOR	1

REV.	DESCRIPTION	DATE	APP.
PRELIMINARY		9/15/00	LIN

NO.	PART NUMBER	DESCRIPTION	QTY.
1	PT02E-14-5P(027)	MATING CONNECTOR	1
2	PT02E-14-18P(027)	MATING CONNECTOR	1
3	PT06E-14-5S(476)	MATING CONNECTOR	1
4	PT06E-14-18S(476)	MATING CONNECTOR	1
5	MPM893ATG6JZ1N	MOTOR	1

REV.	DESCRIPTION	DATE	APP.
PRELIMINARY		9/15/00	LIN

NO.	PART NUMBER	DESCRIPTION	QTY.
1	PT02E-14-5P(027)	MATING CONNECTOR	1
2	PT02E-14-18P(027)	MATING CONNECTOR	1
3			